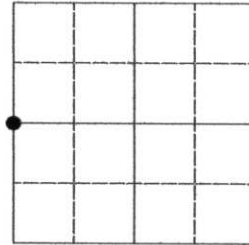


## U.S. PUBLIC LAND SURVEY MONUMENT RECORD

Note: This form is intended and designed to fulfill all requirements of the Wisconsin Administrative Code, Chapter A-E 7.08 U.S. Public Land Monument Record (3)(a)(b)(c)(d)(e)(f)(g)(h)(i). An additional sheet may be added if necessary to conform with said requirements.

(a) CORNER LOCATION:  
 west quarter corner Section 15  
 Township 34 North  
 Range 5 East  
 Town of Tomahawk  
 County of Lincoln

LINCOLN COUNTY COORDINATE  
 SYSTEM, BASED ON GPS CONTROL  
 SUPPLIED FROM THE COUNTY  
 SURVEYORS OFFICE.  
 North: 214,575.169  
 East: 348,952.952



SECTION 15

(b) HISTORY OF ORIGINAL CORNER ESTABLISHMENT

Original Surveyor: J.L. Prentice  
 Date of Survey: Commenced July 1855  
 Completed July 1855

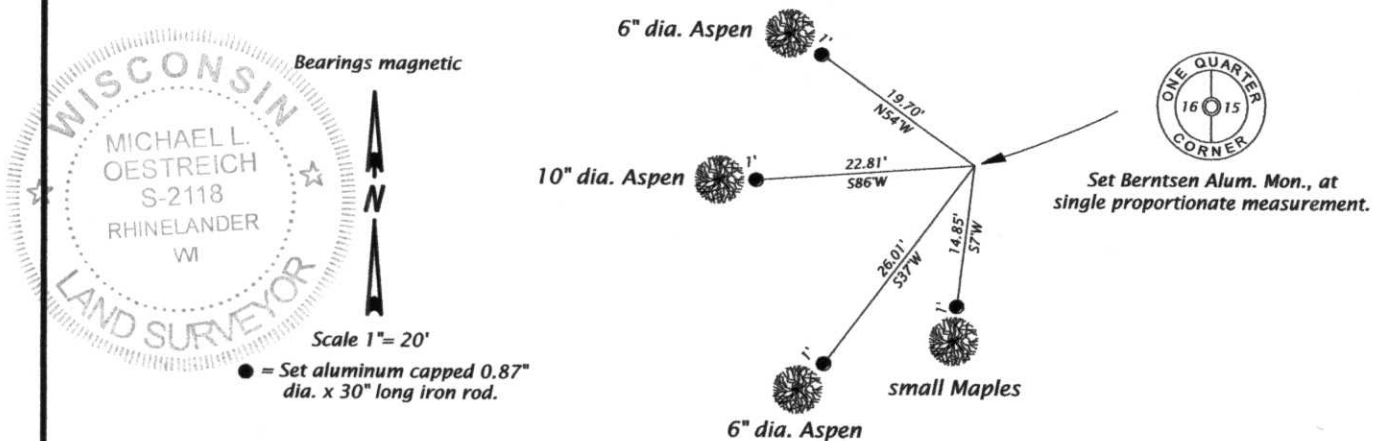
Original B.T.'S  
 Tam. 12" dia., N53°E 27 links  
 Fir 12" dia., N73°W 21 links

(f)(g)(h) DESCRIPTION OF MONUMENT FOUND AT THIS CORNER AND IF IT WAS ACCEPTED, STATE ALL EVIDENCE (MATERIAL, TESTIMONIAL, OCCUPATIONS, PLATS, RECORDS, OTHER MONUMENTS) USED AS A BASIS FOR ESTABLISHING LOCATION. IF NOT ACCEPTED, IF NOTHING WAS FOUND, STATE EVIDENCE USED AS BASIS FOR ESTABLISHING LOCATION. IF REESTABLISHED THROUGH LOST CORNER PROPORTIONATE METHODS, INDICATE ALL MONUMENTS, DISTANCES AND DIRECTIONS USED TO ESTABLISH. INDICATE TYPE OF MONUMENT AND SIGN POST FOUND OR SET.

Original surveyor: J.L. Prentice, north at 40 chains set quarter section post for sections 15 & 16

Michael L. Oestreich: December 2007, found no evidence of the west quarter corner for Section 15, I then set a Berntsen aluminum monument by single proportionate measurement between the southwest and northwest corners of Section 15 and made witness ties as shown in the plan below. See Map No. 07-37(2) by Oestreich Surveying & Mapping, LLC, dated 1/02/08, for complete subdivision of Section 15.

(c)(d)(e) PLAN VIEW OF CORNER WITH TIES TO AT LEAST 4 WITNESS MONUMENTS. IF IN DISAGREEMENT WITH PREVIOUSLY ESTABLISHED CORNER, SHOW THE DISTANCE BETWEEN THE TWO CORNERS AND ALSO INDICATE THE TIES TO THE DISPUTED CORNER.



(i) I, MICHAEL L. OESTREICH, REGISTERED LAND SURVEYOR NO. S-2118  
 HEREBY CERTIFY THAT THE CORNER LOCATION ON THIS RECORD  
 WAS DETERMINED BY ME OR UNDER MY DIRECTION AND CONTROL  
 AND THAT THIS U.S. PUBLIC LAND SURVEY MONUMENT RECORD IS  
 CORRECT AND COMPLETE TO THE BEST OF MY KNOWLEDGE AND  
 BELIEF.

*Michael L. Oestreich*  
 SIGNATURE

2/01/08  
 DATE

RECEIVED BY LINCOLN COUNTY  
 SURVEYOR THIS 5<sup>TH</sup> DAY  
 OF February, 20 08  
*Tony Dallen*  
 COUNTY SURVEYOR

INDEX NO. K-13