

# U.S. PUBLIC LAND SURVEY MONUMENT RECORD

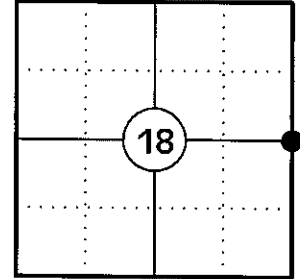
NOTE: THIS FORM IS INTENDED AND DESIGNED TO FULFILL ALL REQUIREMENTS OF WISCONSIN ADMINISTRATIVE CODE CHAPTER A-E 7.08 U.S. PUBLIC LAND SURVEY MONUMENT RECORD (3) (a)(b)(c)(d)(e)(f)(g)(h)(i). AN ADDITIONAL SHEET MAY BE ADDED IF NECESSARY TO CONFIRM WITH SAID REQUIREMENTS.

**(a) CORNER LOCATION:**

EAST CORNER OF SECTION 18  
TOWNSHIP 34 NORTH  
RANGE 5 EAST  
TOWN OF TOMAHAWK  
COUNTY OF LINCOLN

**LINCOLN COUNTY COORDINATES:**

N: 214545.89  
E: 338423.51



**(b) HISTORY OF ORIGINAL CORNER:**

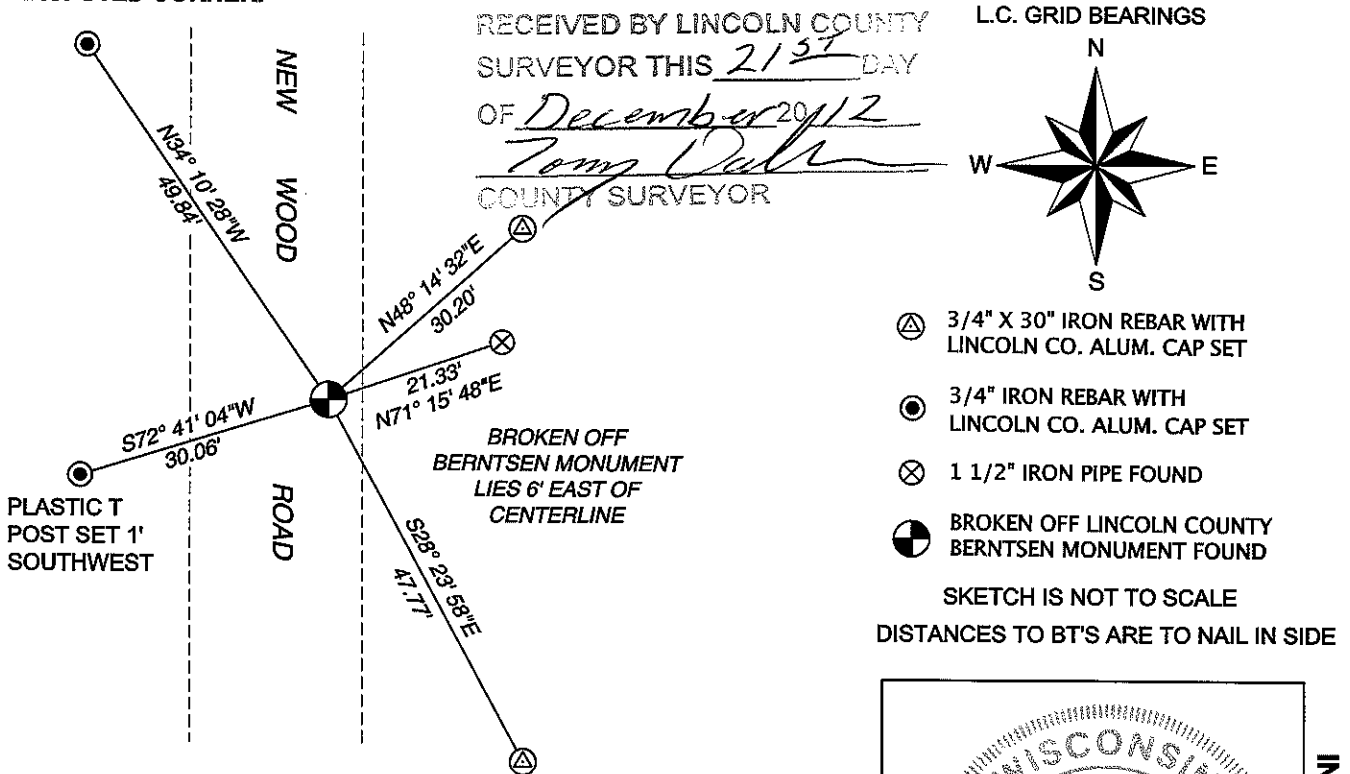
ORIGINAL SURVEYOR: JACKSON L. PRENTICE  
DATE OF SURVEY: JULY 1855

ORIGINAL BEARING TREES: 16" LYN - N74°W, 27 LKS  
10" HEMLOCK - S81°E, 45 LKS

**(f)(g)(h) DESCRIPTION OF MONUMENT FOUND AT THIS CORNER AND IF IT WAS ACCEPTED STATE ALL EVIDENCE (MATERIAL, TESTIMONIAL, OCCUPATIONAL, PLATS, RECORDS, OTHER MONUMENTS) USED AS A BASIS FOR ESTABLISHING LOCATION. IF REESTABLISHING THROUGH LOST CORNER PROPORTIONATE METHODS, INDICATE ALL MONUMENTS, DISTANCES, AND DIRECTIONS USED TO ESTABLISH. INDICATE TYPE OF MONUMENT AND SIGN POST FOUND OR SET.**

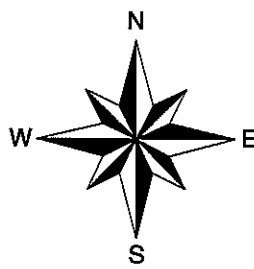
- 1855: JACKSON L. PRENTICE SET THE ORIGINAL 1/4 SECTION CORNER POST.
- 04/30/1990: ROBERT C. WYLIE SHOWS A COMPUTED POSITION FOR THIS CORNER. (L.C. MAP S110A)
- 12/20/2004: DAVID J. GOSLIN SET A LINCOLN COUNTY BERNTSEN MONUMENT BY SINGLE PROPORTION USING THE NE CORNER OF SECTION 18 AND THE SE CORNER OF SECTION 18. SEE LINCOLN COUNTY SURVEY MAP NUMBER L387A.
- 10/29/2012: I FOUND A BROKEN OFF LINCOLN COUNTY BERNTSEN MONUMENT 6 FEET EAST OF THE CENTERLINE OF NEW WOOD ROAD 12" BELOW GRADE. I ALSO FOUND TWO 3/4" IRON RODS WITH ALUMINUM CAPS ON THE WEST SIDE OF THE ROAD AND A 1 1/2" IRON PIPE ON THE EAST SIDE OF THE ROAD. I DID NOT FIND A U.S.P.L.S. MONUMENT RECORD ON FILE WITH LINCOLN COUNTY. I ACCEPTED THIS MONUMENT AS THE CORNER AND SET 2 ADDITIONAL REFERENCE MONUMENTS ON THE EAST SIDE OF THE ROAD TO WITNESS THE CORNER.

**(c)(d)(e) PLAN VIEW OF CORNER WITH TIES TO AT LEAST FOUR WITNESSES. IF IN DISAGREEMENT WITH PREVIOUSLY ESTABLISHED CORNER, SHOW THE DISTANCES BETWEEN THE TWO CORNERS AND ALSO INDICATE THE TIE TO THE DISPUTED CORNER.**



RECEIVED BY LINCOLN COUNTY SURVEYOR THIS 21<sup>ST</sup> DAY OF December 2012  
*Tom Dalk*  
COUNTY SURVEYOR

L.C. GRID BEARINGS



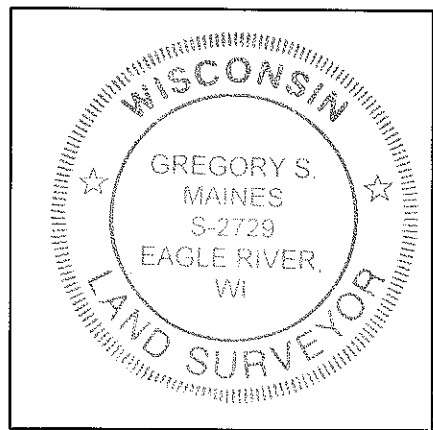
- ⊕ 3/4" X 30" IRON REBAR WITH LINCOLN CO. ALUM. CAP SET
- ⊙ 3/4" IRON REBAR WITH LINCOLN CO. ALUM. CAP SET
- ⊗ 1 1/2" IRON PIPE FOUND
- ⊕ (with diagonal line) BROKEN OFF LINCOLN COUNTY BERNTSEN MONUMENT FOUND

SKETCH IS NOT TO SCALE  
DISTANCES TO BT'S ARE TO NAIL IN SIDE

**CERTIFICATION**

I GREGORY S. MAINES, REGISTERED LAND SURVEYOR NO. 2729, HEREBY CERTIFY THAT THE CORNER LOCATION ON THIS RECORD WAS REFERENCED BY ME OR UNDER MY DIRECTION AND CONTROL AND THAT THIS U.S. PUBLIC LAND SURVEY MONUMENT RECORD IS COMPLETE TO THE BEST OF MY KNOWLEDGE AND BELIEF.

SIGNATURE *Gregory S. Maines*



INDEX NO. K-5