

U.S. PUBLIC LAND SURVEY MONUMENT RECORD

NOTE: This form is intended and designed to fulfill all requirements of Wisconsin Administrative Code, Chapter A-E 7.08 U.S. Public Land Survey Monument Record (3)(a)(b)(c)(d)(e)(f)(g)(h)(i). An additional sheet may be added if necessary to conform with said requirements.

(a) Corner location: Township 34 North

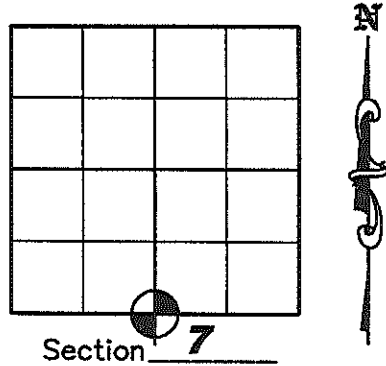
Range 5 East

Town of TOMAHAWK

Proj. 593

County of LINCOLN

Lincoln County N 217111.920
Coordinates E 335860.434



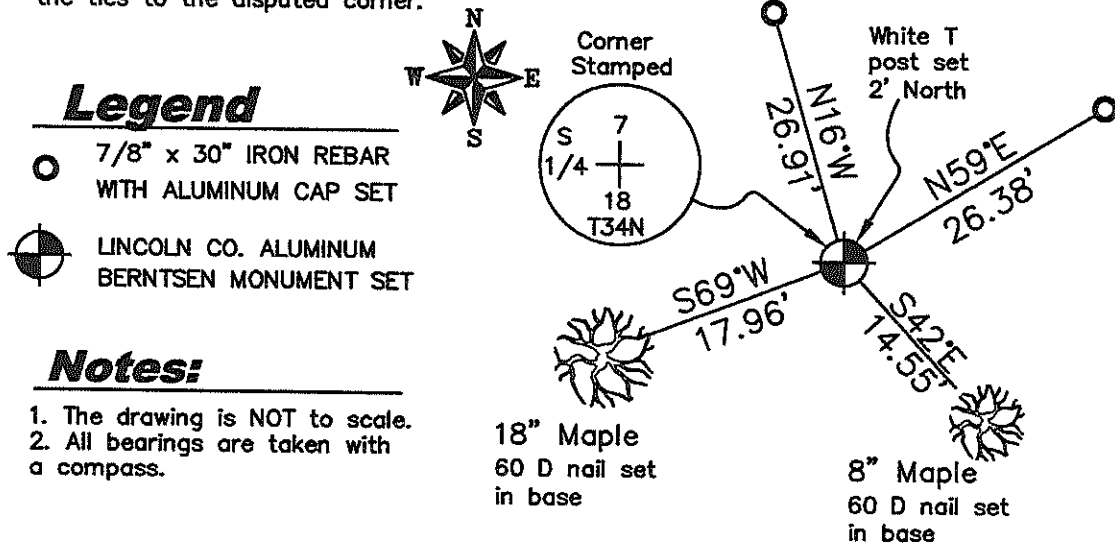
(b)(f)(g)(h) Description of monument found at this corner and if it was accepted, state all evidence (material, testimonial, occupation, plats, records, other monuments) used as a basis for accepting. If not accepted or if nothing was found, state evidence used as a basis for establishing location. If reestablished through lost corner proportionate methods, indicate all monuments, distances and directions used to establish. Indicate type of monument found or set and sign post.

July 1855 - Prentice L. Jackson set 1/4 post; BT's: 12" Hemlock S30°E, 25 links; 16" Hemlock N20°W, 35 links.

January 11, 1989 - R.C. Wylie found no evidence of corner and set 1-1/2" iron pipe; BT's: 12.8" Sugar Maple N63°W, 23.41'; 5.4" Bur Oak N12°E, 13.15'; 7.4" Sugar Maple S37°E, 14.33'; 15.0" Sugar Maple S46°W, 17.47'. See Plat of Survey dated August 1990, Lincoln County Land Information Office Map Number S110-D.

January 31, 2005 - Matthew E. Hوجلund, subcontractor for the Plat of Survey by Stephen J. Favorite dated January 25, 2005, Lincoln County Land Information Office Map Number L396B. We found and accepted the 1-1/2" Iron pipe. We replaced it with a Lincoln County Bernsten Monument and witnessed the corner as shown below.

(c)(d)(e) Plan view of corner with ties to at least 4 witness monuments. If in disagreement with previously established corner, show the distances between the two corners and also indicate the ties to the disputed corner.



Legend

- 7/8" x 30" IRON REBAR WITH ALUMINUM CAP SET
- LINCOLN CO. ALUMINUM BERNSTEN MONUMENT SET

Notes:

1. The drawing is NOT to scale.
2. All bearings are taken with a compass.

(i) I, Matthew E. Hوجلund, certify that the corner location on this record was determined by me under my direction and control and that this U.S. Public Land Survey Monument is correct and complete to the best of my knowledge and belief.

Signature Matthew E. Hوجلund Date 11/3/2008

RECEIVED BY LINCOLN COUNTY SURVEYOR THIS 4TH DAY OF November 20 08
Tommy Dull
COUNTY SURVEYOR