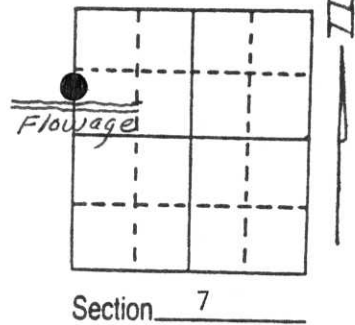


# U.S. PUBLIC LAND SURVEY MONUMENT RECORD

Note: This form is intended and designed to fulfill all requirements of Wisconsin Administrative Code, Chapter A-E 5.02, U.S. Public Land Survey Monument Record (3) (a) (b) (c) (d) (e) (f) (g) (h) (i). An additional sheet may be added if necessary to conform with said requirements.

(a) Corner location: Township 34 North  
 Range 6 East

Town/City/Village Bradley  
 County Lincoln

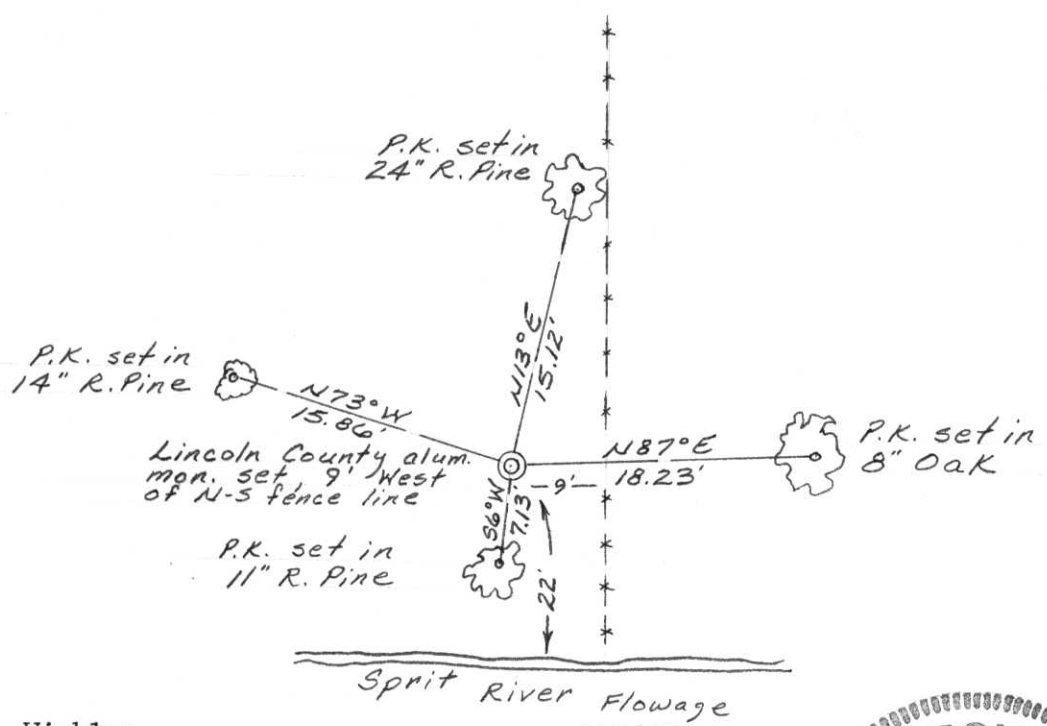


(b) (f) (g) (h) Description of monument found at this corner and if it was accepted, state all evidence (material, testimonial, occupational, plats, records, other monuments) used as a basis for accepting. If not accepted or if nothing was found, state evidence used as basis for establishing location. If reestablished through lost corner proportionate methods, indicate all monuments, distances and directions used to establish.

1994 - Corner was not set as part of the U.S. Public Land Survey. Any original corners were lost when the Spirit River Flowage was developed. I set a Lincoln County Berntsen monument where the west line of Section 7, T34N, R6E intersects the northerly shore of the Spirit River Flowage.

(c) (d) (e) Plan view of corner with ties to at least 4 witness monuments. If in disagreement with previously established corner, show the distances between the two corners and also indicate the ties to the disputed corner.

RECEIVED AT LINCOLN COUNTY  
 COURTHOUSE THIS 21 DAY  
 OF June 1995  
 OF Pat Foltz  
 TAX DESCRIPTION OFFICE



(i) I, Charles E. Winkler S-1431  
 (type or print name) certify that the corner location on this record was determined by me or under my direction and control and that this U.S. Public Land Survey Monument Record is correct and complete to the best of my knowledge and belief.

Charles E. Winkler 11/17/1994  
 Signature Foltz & Associates, Inc. Date



Index No. F-9-1