

# LINCOLN COUNTY U.S. PUBLIC LAND SURVEY MONUMENT LOCATION RECORD

SECTION 3  
TOWNSHIP 34 N  
RANGE 5 E

**E-15**  
NO.

LANDMARK       BENCHMARK \_\_\_\_\_  
CORNER IDENTITY: BERNTSEN SNM1 STEEL NAIL MARKER

FOUND   
SET   
RESET   
RE-TIED

LINCOLN COUNTY COORDINATE: N: 222562.580  
E: 351697.613

ELEVATION-(FEET): \_\_\_\_\_ DATUM: 83 (2011)

WEATHER: P. CLOUDY

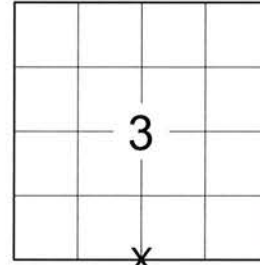
DATE OF SURVEY: 07/02/2019 TEMPERATURE: 80 °F

SURVEY PARTY: KEITH WALKOWSKI AND AUSTIN PELOT

TOMAHAWK

CITY, VILLAGE, TOWN

SECTION



LOCATION  
(Indicated By X)



## BASIS FOR MONUMENT LOCATION:

(DESCRIBE METHOD OF SURVEY AND CORNER AUTHENTICATION)

SEARCHED FOR THE TIES FOR THE SOUTH 1/4 CORNER OF SECTION 3 BEFORE THE START OF THE RESURFACING PROJECT ON HWY "86" AND FOUND ALL 4 TIES FROM THE 1988 TIE SHEET BY JAMES D. REIN BUT DID NOT FIND A CORNER MONUMENT. INTERSECTED THE TIES TO CALCULATE THE CORNER POSITION AND SET A SNM1 STEEL NAIL MARKER AFTER COMPLETION OF RESURFACING PROJECT TO PERPETUATE THE CORNER LOCATION AS SHOWN BELOW.



CERTIFIED CORRECT:

*Keith J. Walkowski*

KEITH J. WALKOWSKI S-2717  
Professional Land Surveyor

DATE: OCTOBER 15TH, 2019

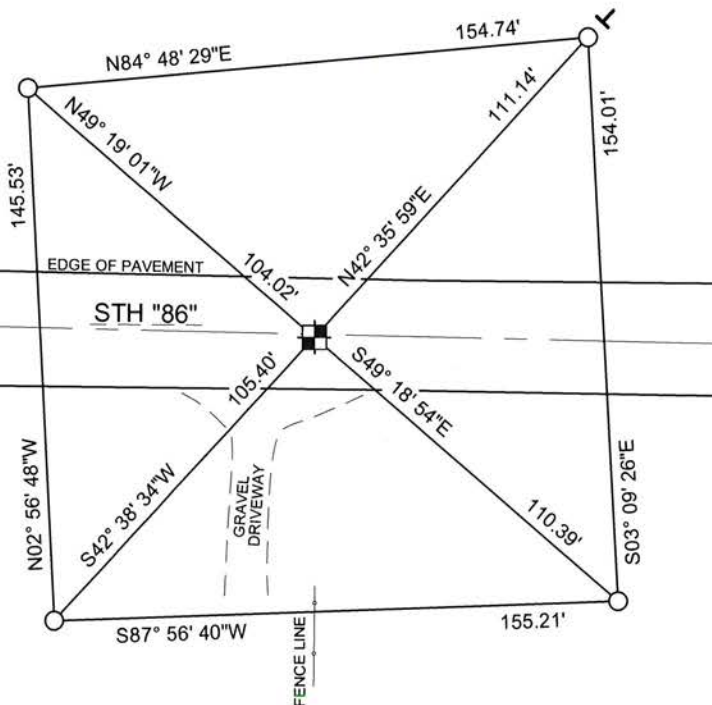
FIELD BOOK NO. NA PAGE NO. NA

COMPANY RIVERSIDE LAND SURVEYING LLC

## TIE SKETCH:

- SET BERNTSEN SNM1 STEEL NAIL MARKER
- FOUND BERNTSEN ALUMINUM MONUMENT
- SET VINYL "T" POST

RECEIVED BY LINCOLN COUNTY  
SURVEYOR THIS 12<sup>TH</sup> DAY  
OF November 20 19  
*Tony Dull*  
COUNTY SURVEYOR



NOTE: CORNER IS 1' SOUTH OF CENTERLINE

BEARINGS ARE BASED ON THE LINCOLN COUNTY COORDINATE SYSTEM NAD 83 (2011) AND REFERENCED AS SHOWN

THIS DRAWING IS NOT TO SCALE

**E-15**  
NO.

E-15

FIELD SURVEY NOTES  
E-D-702 6-70

RECEIVED JUN 18 1991

N<sup>1</sup>/<sub>4</sub> Sec 10  
T34N R5E  
State of Wisconsin | Department of Transportation

E 15 T34N-R5E  
FOUND MONUMENTS  
SET BY REIN



TOPOGRAPHY  
 ALIGNMENT

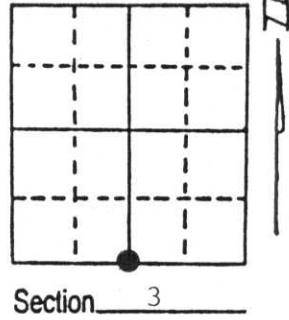
# U.S. PUBLIC LAND SURVEY MONUMENT RECORD

Note: This form is intended and designed to fulfill all requirements of Wisconsin Administrative Code, Chapter A-E 7.08 U.S. Public Land Survey Monument Record (3) (a) (b) (c) (d) (e) (f) (g) (h) (i). An additional sheet may be added if necessary to conform with said requirements.

(a) Corner location: Township 34 North  
 Range 5 East/West

Town/City/Village Tomahawk

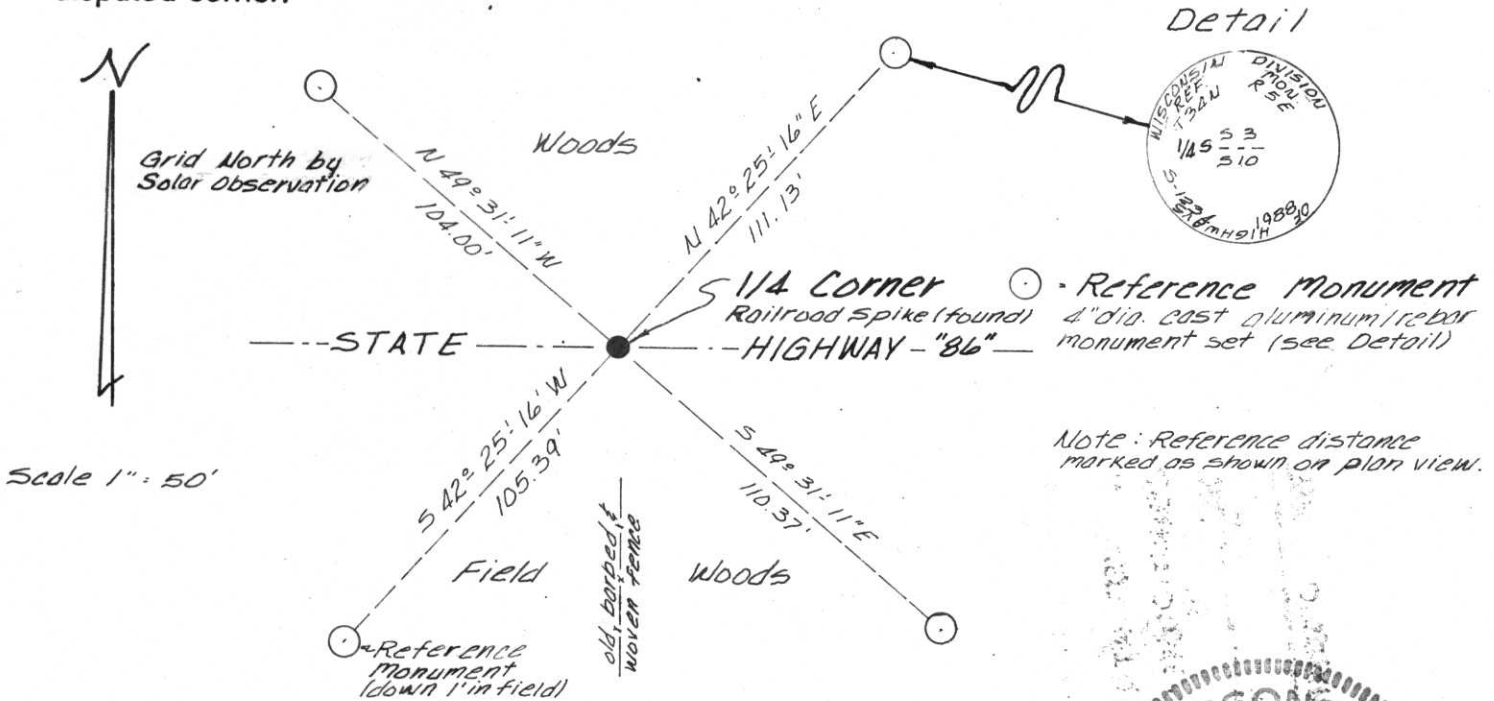
County Lincoln



(b) (f) (g) (h) Description of monument found at this corner and if it was accepted, state all evidence (material, testimonial, occupational, plats, records, other monuments) used as a basis for accepting. If not accepted or if nothing was found, state evidence used as basis for establishing location. If reestablished through lost corner proportionate methods, indicate all monuments, distances and directions used to establish.

January 1855 - Jackson Prentice, Deputy Surveyor, set  $\frac{1}{4}$  post. Bearing trees: 10" Maple N32°E, 25 links; 11" Aspen S35°E, 22 links.  
 Nov 10, 1988 - James D. Rein, RLS No. 1234, found a railroad spike in pavement below surface and 0.7 feet south of center line of State Highway "86" and being an extension of old fence lines from the north and south.

(c) (d) (e) Plan view of corner with ties to at least 4 witness monuments. If in disagreement with previously established corner, show the distances between the two corners and also indicate the ties to the disputed corner.



Note: Reference distance marked as shown on plan view.

(i) I, James D. Rein RLS No. 1234  
 (type or print name) certify that the corner location on this record was determined by me or under my direction and control and that this U.S. Public Land Survey Monument Record is correct and complete to the best of my knowledge and belief.

Signature

Date

December 9th, 1988



Index No. E-15