

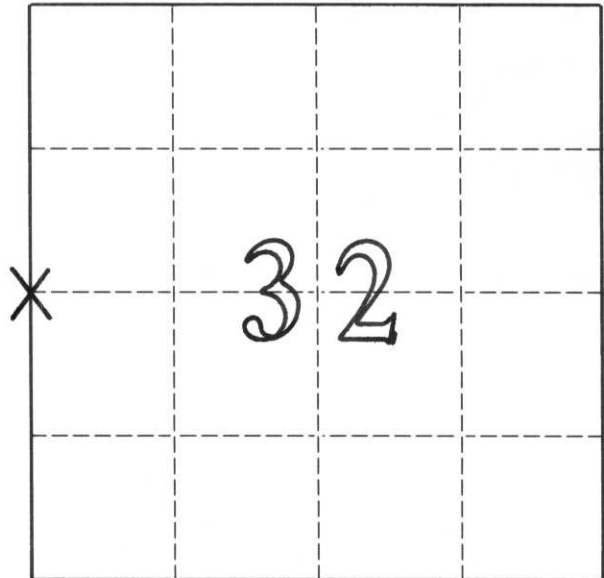
# U. S. PUBLIC LAND SURVEY MONUMENT RECORD

## INSTRUCTIONS:

This record shall show the location of the corner and shall include all of the following nine elements (a through i).

- (a) Identify the corner by reference to the U.S. public land survey system.  
O = Corner monument restored.

WEST  $\frac{1}{4}$  CORNER, SECTION 32,  
TOWNSHIP 33 NORTH, RANGE  
8 EAST, TOWN OF RUSSELL

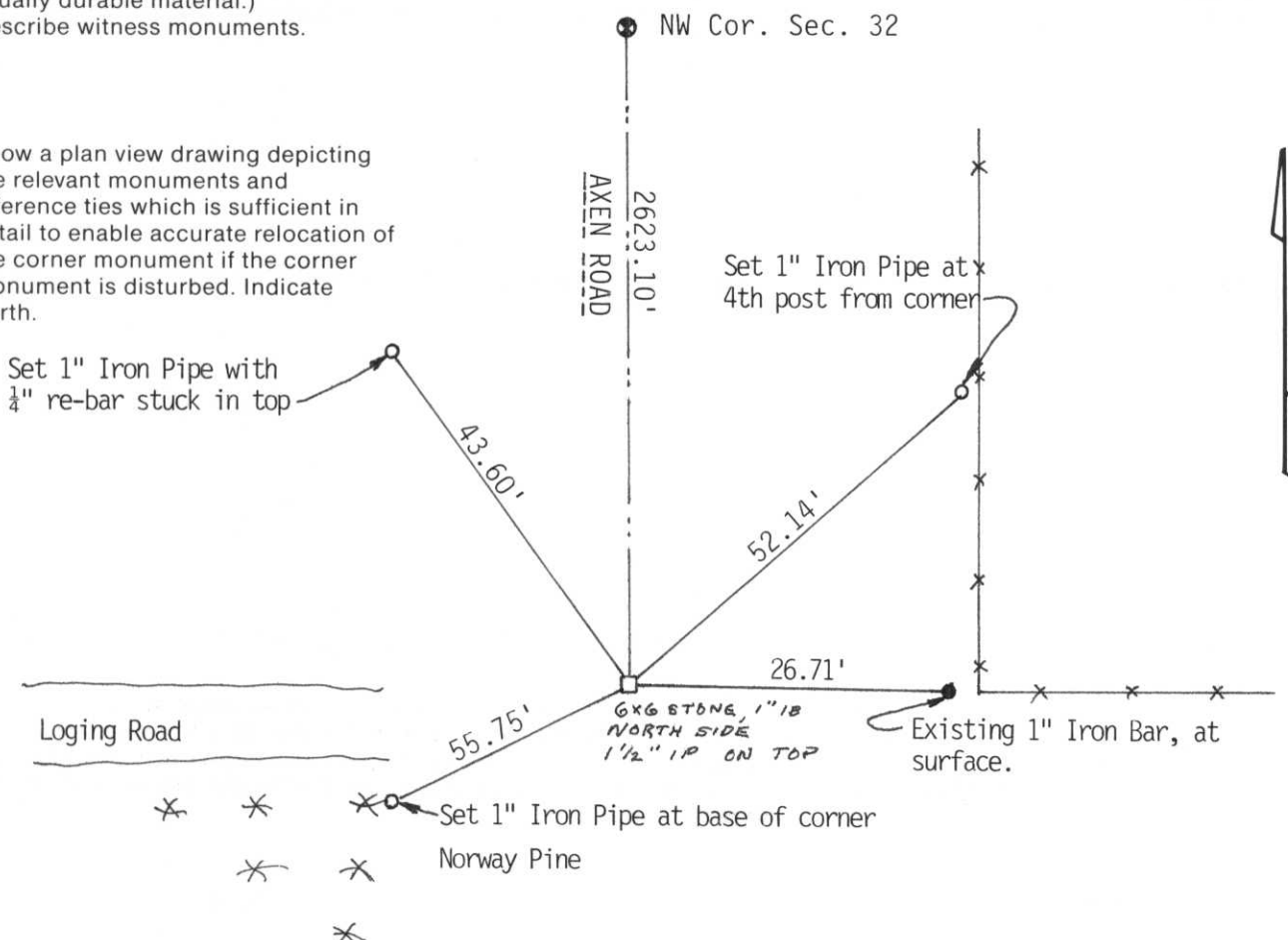


- (b) Describe any record evidence, monument evidence, occupational evidence, testimonial evidence or any other material evidence you considered, and whether the monument was found or placed.

Corner was on record. Original witness ties (trees) were cut down. Existing Iron Bar distance did not match magnetic beep. Dug by hand down 18" found 6"x6" Stone, with 1" Iron Bar on North side of Stone. Looked undisturbed. Set 1 $\frac{1}{2}$ " Iron pipe on top of Stone. Tied out with new ties. Painted all ties Yellow.

- (c) In the plan view drawing below, provide reference ties to at least 4 witness monuments, or, if the location is within a municipality, to at least 2 witness monuments. (Witness monuments shall be made of concrete, natural stone, iron or other equally durable material.)  
Describe witness monuments.

- (d) Show a plan view drawing depicting the relevant monuments and reference ties which is sufficient in detail to enable accurate relocation of the corner monument if the corner monument is disturbed. Indicate north.



32-5

Describe any material discrepancy between the location of the corner as restored or reestablished and the location of that corner as previously restored or reestablished by distance and direction. Show the discrepancy on the plan view drawing under (d), above. Show the distances between the corner as previously restored or reestablished and (1) the corner as restored or reestablished, and (2) to at least 2 of the witness monuments shown on the drawing in (d), above.

Corner was deep enough, soil looked undisturbed, stone and bar looked undisturbed.

- (f) Was the corner restored through acceptance of (1) an obliterated evidence location, or, (2) a found perpetuated location.?

2

- (g & h) Was the corner reestablished through lost corner proportionate methods? If so, show the method, including the directions and distances to other public land survey corners used as evidence or used for proportioning in determining the corner location.

NOT

- (i) I, David L. Osterbrink RLS No. S-2014  
(type or print name)

certify that the corner location shown on this record was determined by me or under my direction and control and that this U.S. Public Land Survey Monument Record is correct and complete to the best of my knowledge and belief.

David L. Osterbrink  
Signature

4-23-93  
Date



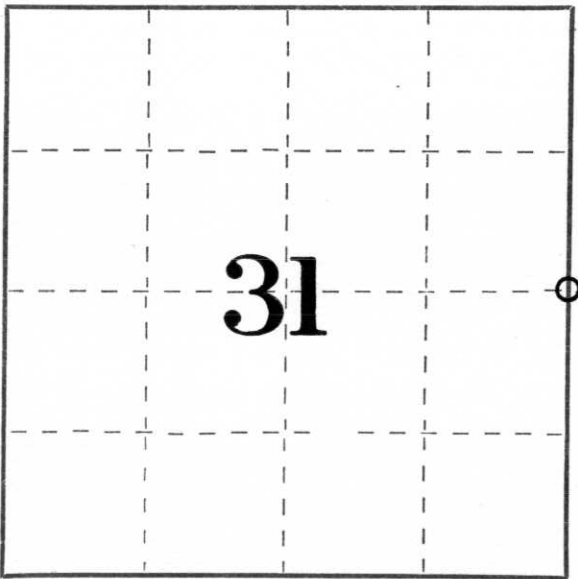
CERTIFIED LAND CORNER RESTORATION

Index No. W-5

State of Wisconsin }  
County of Lincoln } ss.

I Sheridan D. Schwark, do hereby  
certify that on the 12th day  
of July, 1982, I found  
evidence of the East one-quarter  
corner of Section 31  
Township 33, North, Range  
8 East, Fourth, Principal Meridian,  
as described hereon; and that from this evidence  
I established a new monument and accessories  
as described hereon to perpetuate the original  
location of this corner.

Resident witnesses:

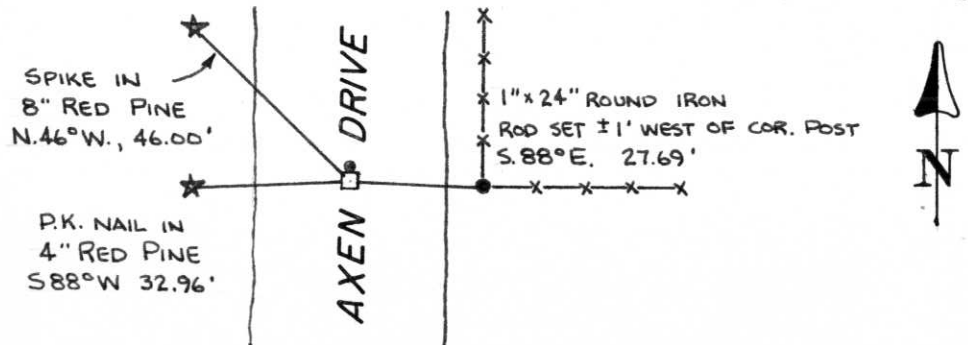


○ = Corner monument restored.

History of original corner establishment:  
Wood post set by original government surveyor.

Description of corner evidence found:  
We excavated the granite roadway with a backhoe (Jack Prueser operator)  
and found a 6" x 6" granite monument approximately 1 foot below the surface.  
We set a 1" x 24" solid round iron rod at the north edge of the monument  
to aid in future recovery. We also established the references as shown below.

Description of monument and accessories I established to perpetuate the original location of this corner.



Dated at Merrill, Wis., this 28 day of July, 19 82.

Signature Sheridan D. Schwark Title Registered Land Surveyor Registration No. S-1205  
(County Surveyor, Registered Land Surveyor, or other duly authorized official)

Office of Register of Deeds, County of \_\_\_\_\_, I hereby certify that the within  
instrument was filed in this office for record on the \_\_\_\_\_ day of \_\_\_\_\_, 19\_\_\_\_  
at \_\_\_\_\_ o'clock \_\_\_\_\_ M.

\_\_\_\_\_  
(Register of Deeds)

By \_\_\_\_\_ Deputy