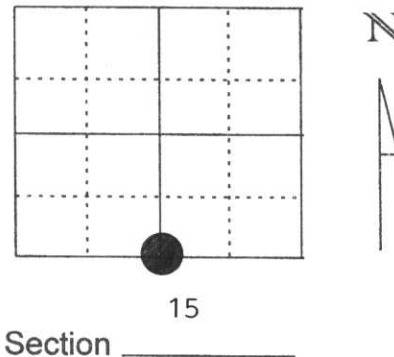


U.S. PUBLIC LAND SURVEY MONUMENT RECORD

Note: This form is intended and designed to fulfill all requirements of Wisconsin Administrative Code, Chapter A-E 5.02, U.S. Public Land Survey Monument Record (3) (a) (b) (c) (d) (e) (f) (g) (h) (l). An additional sheet may be added if necessary to conform with said requirements.

(a) Corner location: Township 33 North
Range 8 East
Town/City/Village TN. RUSSELL
County Lincoln



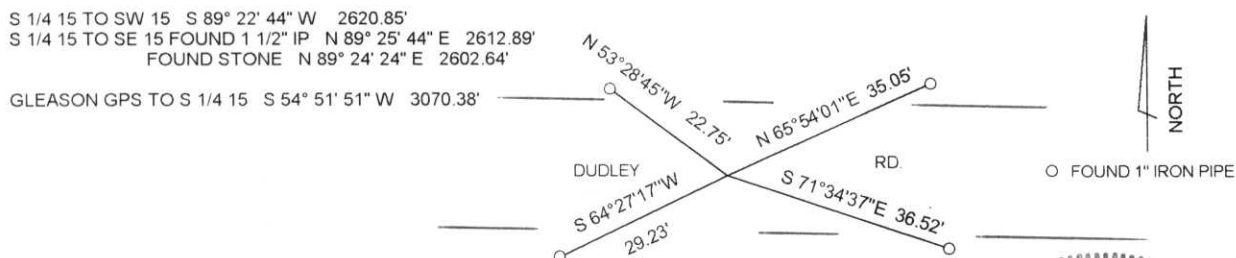
Section 15

(b) (f) (g) (h) Description of monument found at this corner and if it was accepted, state all evidence (material, testimonial, occupational, plats, records, other monuments) used as a basis for accepting. If not accepted or if nothing was found, state evidence used as basis for establishing location. If reestablished through lost corner proportionate methods, indicate all monuments, distances and directions used to establish.

DECEMBER 1994 DANIEL HIGGINBOTHAM RECOVERED A STONE FOR THE CORNER POSITION & RESET A BERNTSEN MONUMENT IN ITS PLACE. ALSO ESTABLISHED 4 WITNESS PIPES.

JUNE 1998 I FOUND THE WITNESS PIPES SET BY HIGGINBOTHAM. I DID NOT DIG THE CORNER AS THE DISTANCE TIE TO THE IP FOR THE SE CORNER OF SECTION 15 CHECKED. I TIED THE CORNER TO THE SE & SW CORNER OF SECTION 15 AND TO THE GLEASON GPS STATION. CORNER FALLS IN A FILL AREA WITH A WET SWAMP ON BOTH SIDES. THE WITNESS PIPES ARE ON THE EDGE OF THE TRAVELED PORTION OF DUDLEY ROAD.

(c) (d) (e) Plan view of corner with ties to at least 4 witness monuments. If in disagreement with previously established corner, show the distances between the two corners and also indicate the ties to the disputed corner.

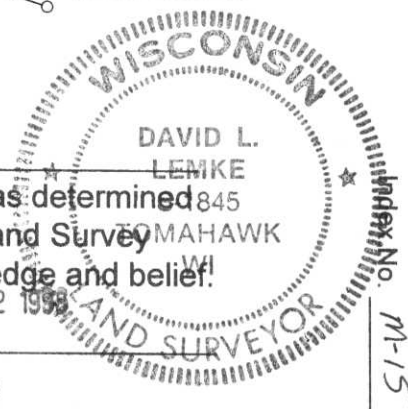


(l) I, DAVID L. LEMKE S-1845
(type or print name) certify that the corner location on this record was determined by me or under my direction and control and that this U.S. Public Land Survey Monument Record is correct and complete to the best of my knowledge and belief.

Signature

RECEIVED AT LINCOLN COUNTY
COURTHOUSE THIS 2nd DAY
OF July 19 98
Pat Priebe
TAX DESCRIPTION OFFICE

Date



U.S. PUBLIC LAND SURVEY MONUMENT RECORD

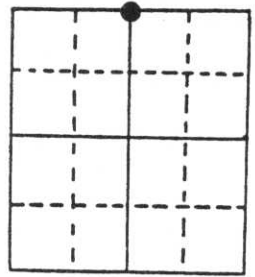
Note: This form is intended and designed to fulfill all requirements of Wisconsin Administrative Code, Chapter A-E 5.02, U.S. Public Land Survey Monument Record (3) (a) (b) (c) (d) (e) (f) (g) (h) (i). An additional sheet may be added if necessary to conform with said requirements.

(a) Corner location: Township 33 North

Range 8 East

Town/City/Village TOWN OF RUSSELL

County LINCOLN COUNTY

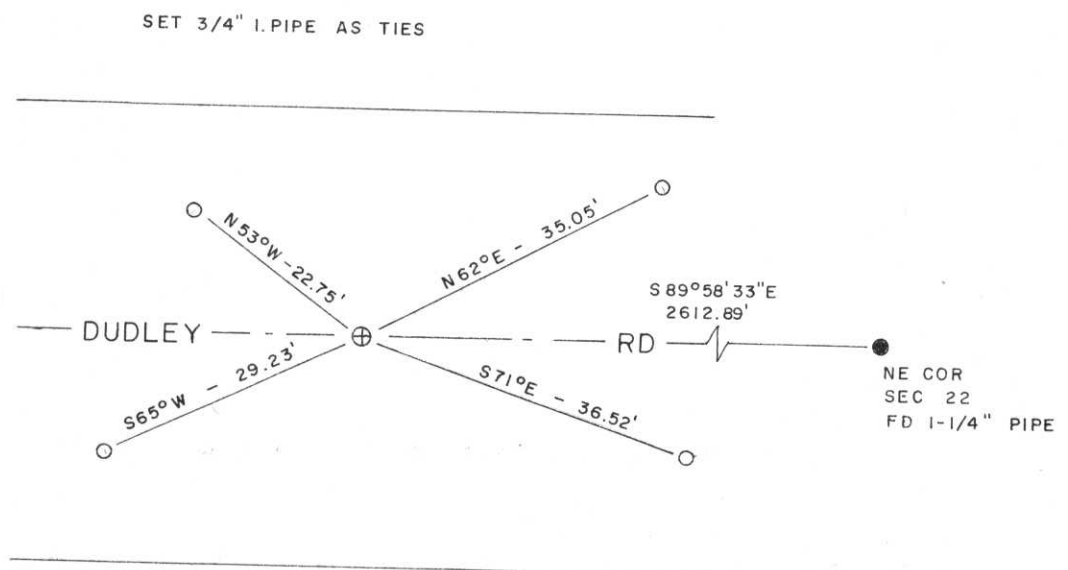


Section 22

(b) (f) (g) (h) Description of monument found at this corner and if it was accepted, state all evidence (material, testimonial, occupational, plats, records, other monuments) used as a basis for accepting. If not accepted or if nothing was found, state evidence used as basis for establishing location. If reestablished through lost corner proportionate methods, indicate all monuments, distances and directions used to establish.

After traversing from the Northwest to Northeast Section Corners in Section 22, we found an area to excavate. This area of excavation was in a fill area, with swamp land being on either side of the road. We excavated with the backhoe an area approximately 6 feet wide by approximately 15 feet East-West. Approximately 4 feet below the road surface we found an existing stone with what appeared to be a chiseled X. We accepted this stone as best evidence for corner location and subsequently monumented said location with a Lincoln County monument and tied off as below.

(c) (d) (e) Plan view of corner with ties to at least 4 witness monuments. If in disagreement with previously established corner, show the distances between the two corners and also indicate the ties to the disputed corner.



(i) I, DAN HIGGINBOTHAM 5-1935

(type or print name) certify that the corner location on this record was determined by me or under my direction and control and that this U.S. Public Land Survey Monument Record is correct and complete to the best of my knowledge and belief.

Signature

Date



Index No. M-15