

U.S. PUBLIC LAND SURVEY MONUMENT RECORD

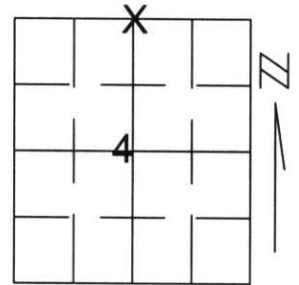
Note: This form is intended and designed to fulfill all requirements of Wisconsin Administrative Code, Chapter A-E 5.02, U.S. Public Land Survey Monument Record (3)(a)(b)(c)(d)(e)(f)(g)(h)(i). An additional sheet may be added if necessary to conform with said requirements.

(a) Corner location: Township 32 North

Range 7 East

Town/City/Village MERRILL

County LINCOLN



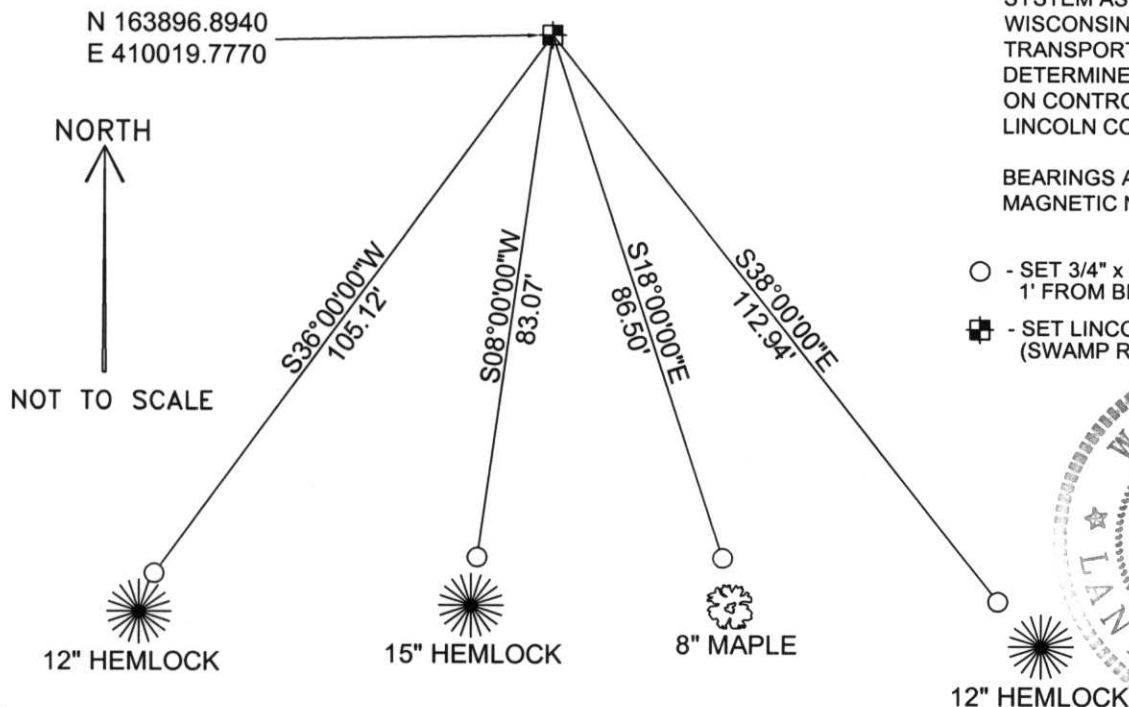
Section 4

(b)(f)(g)(h) Description of monument found at this corner and if it was accepted, state all evidence (material, testimonial, occupational, plats, records, other monuments) used as a basis for accepting. If not accepted or if nothing was found, state evidence used as basis for establishing location. If reestablished through lost corner proportionate methods, indicate all monuments, distances and directions used to establish.

I SEARCHED AN AREA DETERMINED BY MEASURE TO NEARBY CORNERS. THIS AREA FELL IN A FLOATING BOG AND I FOUND NO EVIDENCE OF THE CORNER'S ORIGINAL LOCATION. DUE TO LITTLE OR NO OCCUPATION LINES IN THIS OR ADJACENT SECTION 33, T33N, R7E, I SET THE CORNER USING SINGLE PROPORTIONATE METHOD BETWEEN THE NORTHWEST AND NORTHEAST CORNERS OF SECTION 14 WHERE I FOUND STONE MONUMENTS. I SET TIES AS SHOWN BELOW TO PERPETUATE THE CORNER'S LOCATION.

RECEIVED AT LINCOLN COUNTY
COURTHOUSE THIS 12TH DAY
OF December 20 02
Tony Dally
LAND INFORMATION OFFICE

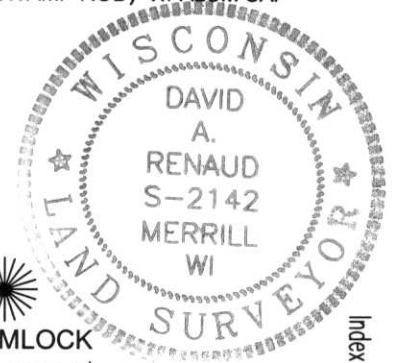
(c)(d)(e) Plan view of corner with ties to at least 4 witness monuments. If in disagreement with previously established corner, show the distances between the two corners and also indicate the ties to the disputed corner.



COORDINATES ARE REFERENCED TO THE LINCOLN COUNTY COORDINATE SYSTEM AS DEVELOPED BY THE WISCONSIN DEPARTMENT OF TRANSPORTATION AND WERE DETERMINED BY GPS OBSERVATIONS ON CONTROL POINTS AS SUPPLIED BY LINCOLN COUNTY.

BEARINGS ARE REFERENCED TO MAGNETIC NORTH.

- - SET 3/4" x 30" REBAR W/ ALUM CAP 1' FROM BEARING TREE
- ⊠ - SET LINCOLN COUNTY MONUMENT (SWAMP ROD) W/ ALUM CAP



(i) I, David A. Renaud, RLS S-2142, certify that the corner location on this record was determined by me or under my direction and control and that this U.S. Public Land Survey Monument Record is correct and complete to the best of my knowledge and belief.

David A. Renaud 12-09-02
Signature Date

Index No. 43272

A-11



MARKER