

# U.S. PUBLIC LAND SURVEY MONUMENT RECORD

NOTE: This form is intended and designed to fulfill all requirements of Wisconsin Administrative Code, Chapter A-E 7.08 U.S. Public Land Survey Monument Record. An additional sheet may be added if necessary to conform with said requirements.

**CORNER LOCATION**

Section Corner common to Sections 32, 31, 5 and 6  
 Township 33 North, Range 7 East of the 4th P.M.  
 Town of Birch, Lincoln County, Wisconsin

6	5	4	3	2	1
7	8	9	10	11	12
18	17	16	15	14	13
19	20	21	22	23	24
30	29	28	27	26	25
31	32	33	34	35	36

T33N - R7E

**HISTORY OF ORIGINAL CORNER ESTABLISHMENT**

ORIGINAL SURVEYOR: Marsh, J. M.  
 DATE OF SURVEY: July 1851 - August 1851  
 ORIGINAL ACCESSORIES: "Set post for corner to sections 5, 6, 31, and 32"  
 Hemlock 9 S28°E 10 links  
 Hemlock 10 S29°W 15 links  
 Hemlock 9 N20°W 14 links  
 Hemlock 8 N26°E 11 links

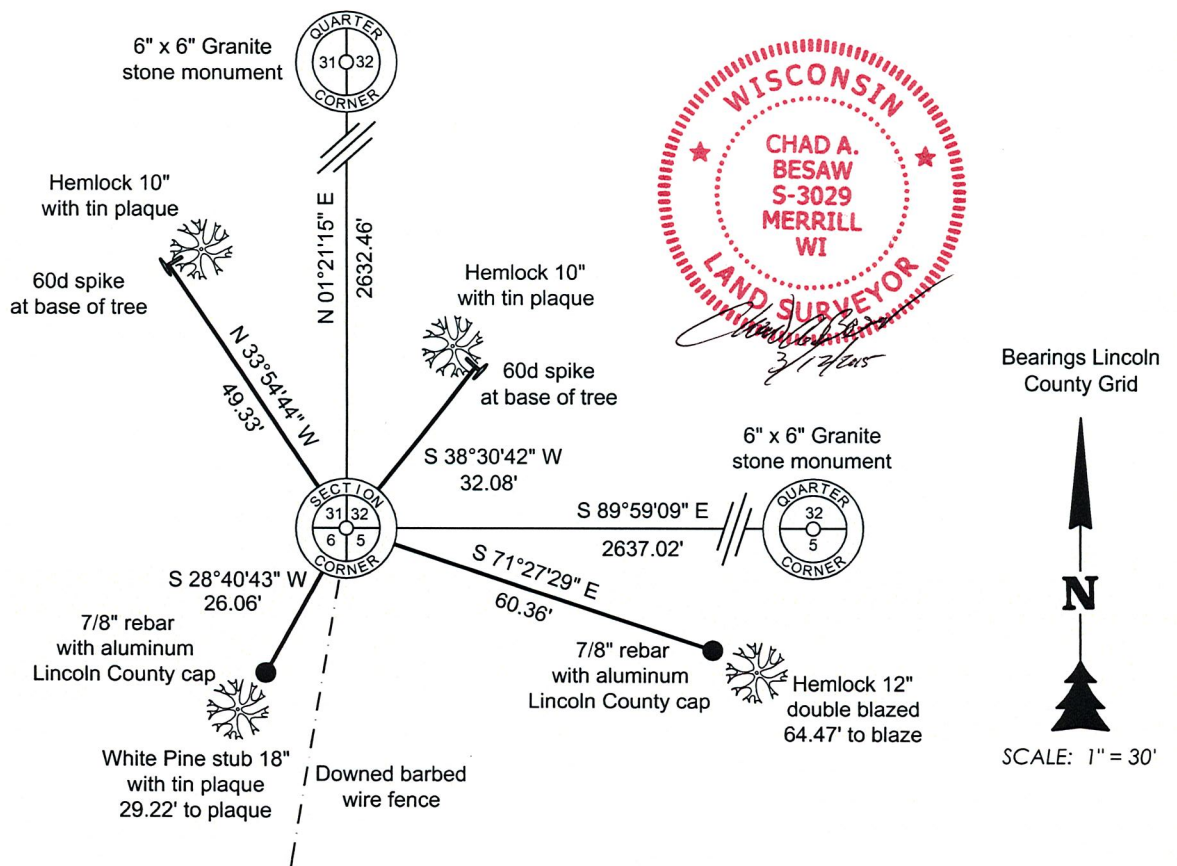
DESCRIPTION OF MONUMENT FOUND AT THIS CORNER AND IF IT WAS ACCEPTED, STATE ALL EVIDENCE (MATERIAL, TESTIMONIAL, OCCUPATIONAL, PLATS, RECORDS, OTHER MONUMENTS) USED AS A BASIS FOR ACCEPTING. IF NOT ACCEPTED OR IF NOTHING WAS FOUND, STATE EVIDENCE USED AS BASIS FOR ESTABLISHING LOCATION. IF RE-ESTABLISHED THROUGH LOST CORNER PROPORTIONATE METHODS, INDICATE ALL MONUMENTS, DISTANCES AND DIRECTIONS USED TO ESTABLISH. INDICATE TYPE OF MONUMENT AND SIGN POST FOUND OR SET.

1940's - Francis Fox set granite stone monuments throughout portions of Lincoln County.

Feb. 1988 - Chester Nowaczyk found existing stone monument, and set accessories as shown on USPLS Monument Record dated 3-09-1988 filed in Lincoln County Land Information Office.

Feb. 2015 - Chad A. Besaw found existing 6" x 6" granite stone monument. Set a white PVC T-post 1'+/- North of stone monument. Witnessed as shown below:

PLAN VIEW OF CORNER WITH TIES TO AT LEAST 4 WITNESS MONUMENTS. IF IN DISAGREEMENT WITH PREVIOUSLY ESTABLISHED CORNER, SHOW THE DISTANCES BETWEEN THE TWO CORNERS AND ALSO INDICATE THE TIES TO THE DISPUTED.



I, Chad A. Besaw, Registered Land Surveyor No. S-3029, hereby certify that the corner location on this record was determined by me or under my direction and control and that this U.S. Public Land Survey Monument Record is correct and complete to the best of my knowledge and belief.

*Chad A. Besaw* 3/12/2015  
 Chad A. Besaw, RLS No. S-3029  
 STEIGERWALDT LAND SURVEYING, LLC

RECEIVED BY LINCOLN COUNTY  
 SURVEYOR THIS 23<sup>RD</sup> DAY  
 OF March 2015  
*Tony Dahn*  
 COUNTY SURVEYOR

INDEX NO.

4-5

# U.S. PUBLIC LAND SURVEY MONUMENT RECORD

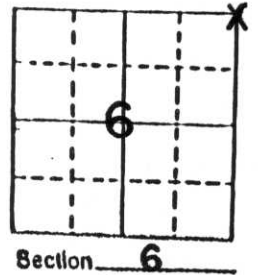
Note: This form is intended and designed to fulfill all requirements of Wisconsin Administrative Code, Chapter A-E 5.02, U.S. Public Land Survey Monument Record (3) (a) (b) (c) (d) (e) (f) (g) (h) (i). An additional sheet may be added if necessary to conform with said requirements.

(a) Corner location: Township ~~10~~ North 32

Range ~~32~~ East 7

Town MERRILL

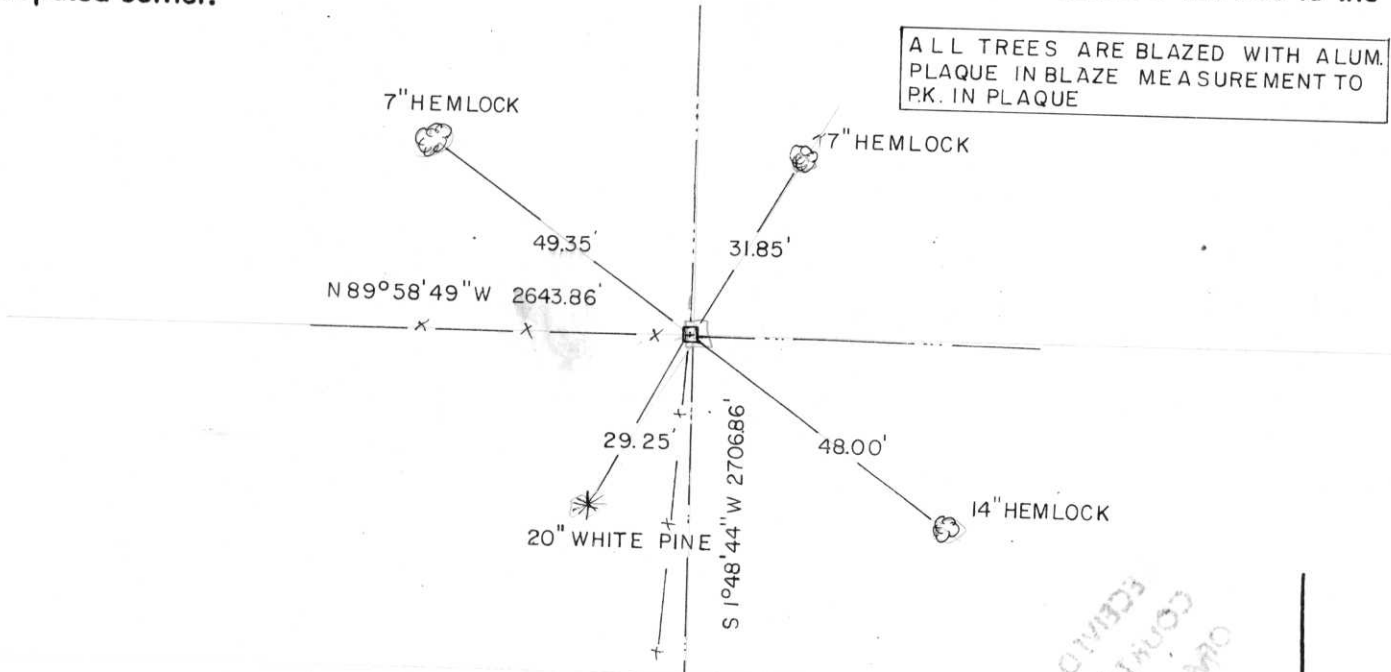
County LINCOLN



b) (f) (g) (h) Description of monument found at this corner and if it was accepted, state all evidence (material, testimonial, occupational, plats, records, other monuments) used as a basis for accepting. If not accepted or if nothing was found, state evidence used as basis for establishing location. If reestablished through lost corner proportionate methods, indicate all monuments, distances and directions used to establish.

Found existing stone monument as per Frances Fox notes.

c) (d) (e) Plan view of corner with ties to at least 4 witness monuments. If in disagreement with previously established corner, show the distances between the two corners and also indicate the ties to the disputed corner.



(i) I, CHESTER J. NOWACZYK RLS NO. 1143  
 (type or print name) certify that the corner location on this record was determined by me or under my direction and control and that this U.S. Public Land Survey Monument Record is correct and complete to the best of my knowledge and belief.

Chester J. Nowaczyk 3-9-88  
 Signature Date



Index No. A-5