

U.S. PUBLIC LAND SURVEY MONUMENT RECORD

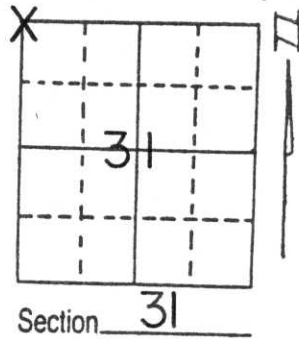
Note: This form is intended and designed to fulfill all requirements of Wisconsin Administrative Code, Chapter A-E 5.02, U.S. Public Land Survey Monument Record (3) (a) (b) (c) (d) (e) (f) (g) (h) (i). An additional sheet may be added if necessary to conform with said requirements.

(a) Corner location: Township 33 North

Range 8 East

Town/City/Village RUSSELL

County LINCOLN

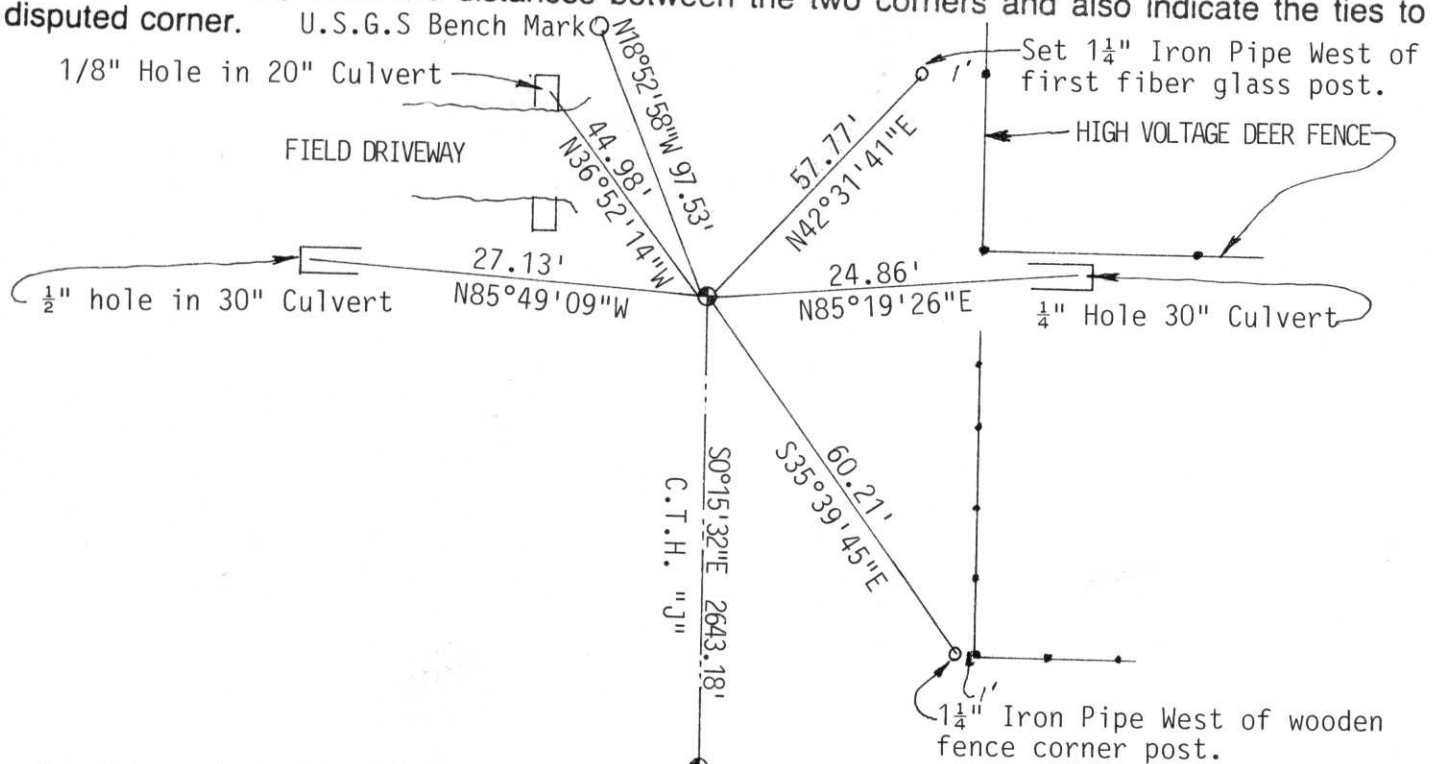


(b) (f) (g) (h) Description of monument found at this corner and if it was accepted, state all evidence (material, testimonial, occupational, plats, records, other monuments) used as a basis for accepting. If not accepted or if nothing was found, state evidence used as basis for establishing location. If reestablished through lost corner proportionate methods, indicate all monuments, distances and directions used to establish.

Original corner set by James M. Marsh, July - August 1851. No further record of corner. Good fences to East and West, planned to dig for corner, but found that there is a 30" Culvert within 18" of fence line. Long time resident, Roger Gerbig, said his father told him that this stone had been removed by Peter Mush in early 1950's in preparation of Black Topping C.T.H. "J". County Highway Department has no records of finding corner when culvert was installed. Held parole evidence that corner is gone. Set Lincoln County Aluminum monument on Center Line and fence line intersection. Tied out, painted all ties red.

Top of Monument is 2" below Black top surface.

(c) (d) (e) Plan view of corner with ties to at least 4 witness monuments. If in disagreement with previously established corner, show the distances between the two corners and also indicate the ties to the disputed corner.



(i) I, David L. Osterbrink RLS No. S-2014 W $\frac{1}{4}$ Corner Sec. 31

(type or print name) certify that the corner location on this record was determined by me or under my direction and control and that this U.S. Public Land Survey Monument Record is correct and complete to the best of my knowledge and belief.

David L. Osterbrink 9-29-94
Signature Date



Index No. C-1