

U.S. PUBLIC LAND SURVEY MONUMENT RECORD

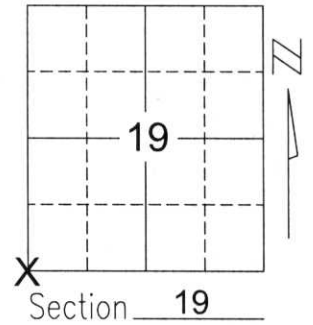
Note: This form is intended and designed to fulfill all requirements of Wisconsin Administrative Code, Chapter A-E 5.02, U.S. Public Land Survey Monument Record (3)(a)(b)(c)(d)(e)(f)(g)(h)(i). An additional sheet may be added if necessary to conform with said requirements.

(a) Corner location: Township 33 North

Range 8 East

Town/City/Village RUSSELL

County LINCOLN



(b)(f)(g)(h) Description of monument found at this corner and if it was accepted, state all evidence (material, testimonial, occupational, plats, records, other monuments) used as a basis for accepting. If not accepted or if nothing was found, state evidence used as basis for establishing location. If reestablished through lost corner proportionate methods, indicate all monuments, distances and directions used to establish.

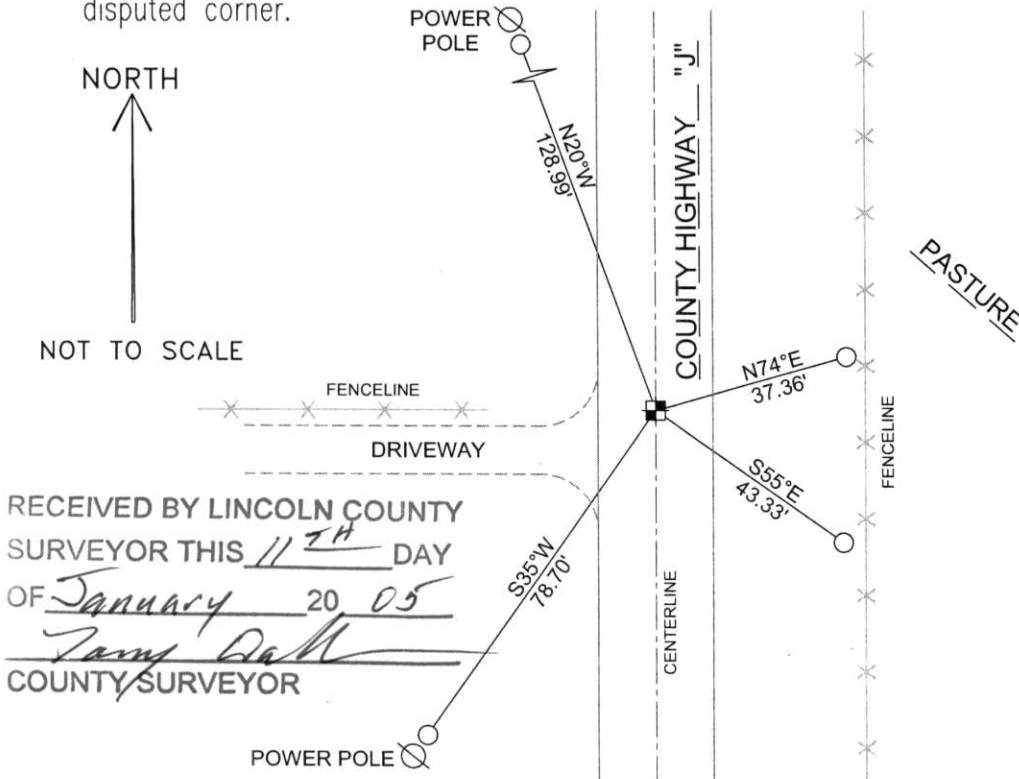
SEARCHED FOR CORNER WITH THE COUNTY'S GRADALL. FOUND NO EVIDENCE OF THE SECTION CORNER STONE.

TALKED WITH A LOCAL FARMER, HE SAID, "IT WAS RIPPED OUT DURING THE RECONSTRUCTION OF HIGHWAY "J".

FOUND AN OLD FENCELINE TO THE WEST, NORTH OF A BLACKTOP DRIVEWAY. USED FENCELINE AND CENTERLINE OF HIGHWAY "J" AS BEST AVAILABLE EVIDENCE.

SET BERNSTEN AND TIED OUT TO PERPETUATE CORNER LOCATION.

(c)(d)(e) Plan view of corner with ties to at least 4 witness monuments. If in disagreement with previously established corner, show the distances between the two corners and also indicate the ties to the disputed corner.



COORDINATES ARE REFERENCED TO THE LINCOLN COUNTY COORDINATE SYSTEM AS DEVELOPED BY THE WISCONSIN DEPARTMENT OF TRANSPORTATION AND WERE DETERMINED BY GPS OBSERVATIONS ON CONTROL POINTS AS SUPPLIED BY LINCOLN COUNTY.

BEARINGS ARE REFERENCED TO MAGNETIC NORTH.

N - 174493.875
E - 428485.580

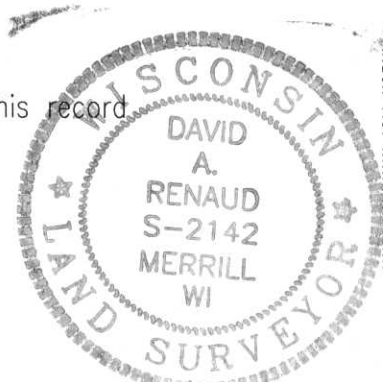
○ - SET 3/4" x 30" REBAR W/ ALUM CAP AT LOCATION SHOWN

■ - SOUTHWEST CORNER SET BERNSTEN MONUMENT

RECEIVED BY LINCOLN COUNTY SURVEYOR THIS 11TH DAY OF January 20 05
James Dall
COUNTY SURVEYOR

(i) I, David A. Renaud, RLS S-2142, certify that the corner location on this record was determined by me or under my direction and control and that this U.S. Public Land Survey Monument Record is correct and complete to the best of my knowledge and belief.

David Renaud 12-23-04
Signature Date
S-2142



Index No. 193386

Q-1