

U.S. PUBLIC LAND SURVEY MONUMENT RECORD

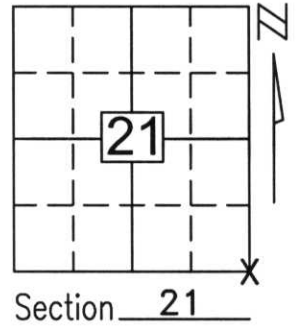
Note: This form is intended and designed to fulfill all requirements of Wisconsin Administrative Code, Chapter A-E 5.02, U.S. Public Land Survey Monument Record (3)(a)(b)(c)(d)(e)(f)(g)(h)(i). An additional sheet may be added if necessary to conform with said requirements.

(a) Corner location: Township 33 North

Range 7 East

Town/City/Village BIRCH

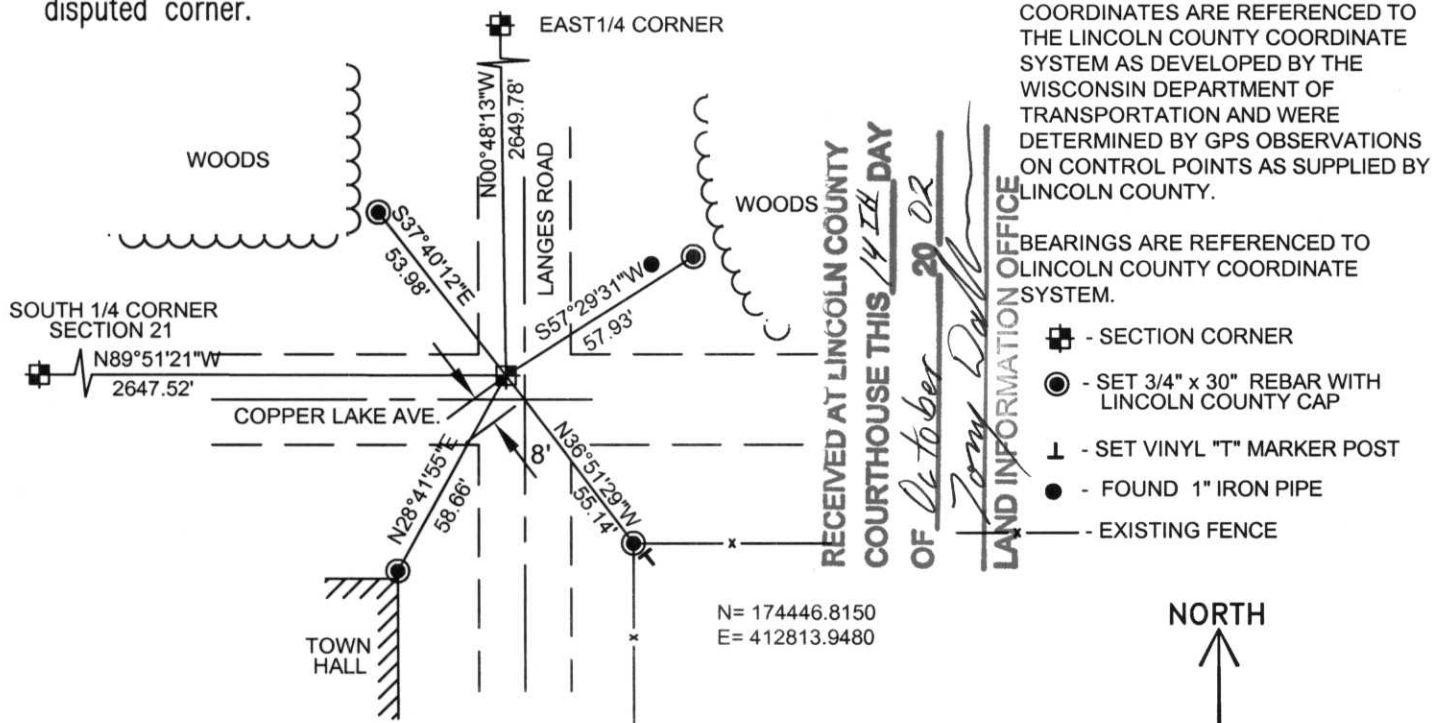
County LINCOLN



(b)(f)(g)(h) Description of monument found at this corner and if it was accepted, state all evidence (material, testimonial, occupational, plats, records, other monuments) used as a basis for accepting. If not accepted or if nothing was found, state evidence used as basis for establishing location. If reestablished through lost corner proportionate methods, indicate all monuments, distances and directions used to establish.

WE DUG USING A COUNTY SUPPLIED BACK HOE AND FOUND A 6" x 6" GRANITE STONE APPROXIMATELY 1 FOOT BELOW THE ROAD SURFACE. A 1 1/4" x 16" BAR WAS SET ±.5 FEET NORTHWEST OF STONE TO AID IN RECOVERY. WE HELD THE STONE AS BEST OF THE SOUTHEAST CORNER OF SECTION 21.

(c)(d)(e) Plan view of corner with ties to at least 4 witness monuments. If in disagreement with previously established corner, show the distances between the two corners and also indicate the ties to the disputed corner.



COORDINATES ARE REFERENCED TO THE LINCOLN COUNTY COORDINATE SYSTEM AS DEVELOPED BY THE WISCONSIN DEPARTMENT OF TRANSPORTATION AND WERE DETERMINED BY GPS OBSERVATIONS ON CONTROL POINTS AS SUPPLIED BY LINCOLN COUNTY.

BEARINGS ARE REFERENCED TO LINCOLN COUNTY COORDINATE SYSTEM.

- ⊕ - SECTION CORNER
- - SET 3/4" x 30" REBAR WITH LINCOLN COUNTY CAP
- ⊥ - SET VINYL "T" MARKER POST
- - FOUND 1" IRON PIPE
- - EXISTING FENCE

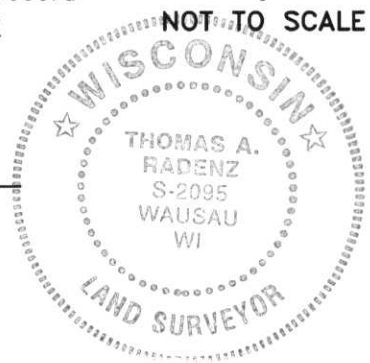
N= 174446.8150
E= 412813.9480

NORTH

(i) I, Thomas A. Radenz, RLS certify that the corner location on this record was determined by me or under my direction and control and that this U.S. Public Land Survey Monument Record is correct and complete to the best of my knowledge and belief.

Thomas A. Radenz
Signature

10/2/02
Date



Index No. — R-13





COPPER LAKE

SPEED
LIMIT
45





