

U.S. PUBLIC LAND SURVEY MONUMENT RECORD

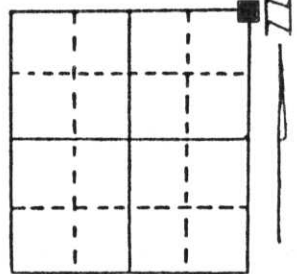
Note: This form is intended and designed to fulfill all requirements of Wisconsin Administrative Code, Chapter A-E 5.02, U.S. Public Land Survey Monument Record (3) (a) (b) (c) (d) (e) (f) (g) (h) (i). An additional sheet may be added if necessary to conform with said requirements.

(a) Corner location: Township 33 North

Range 7 East

Town/City/Village BIRCH

County LINCOLN



Section 29

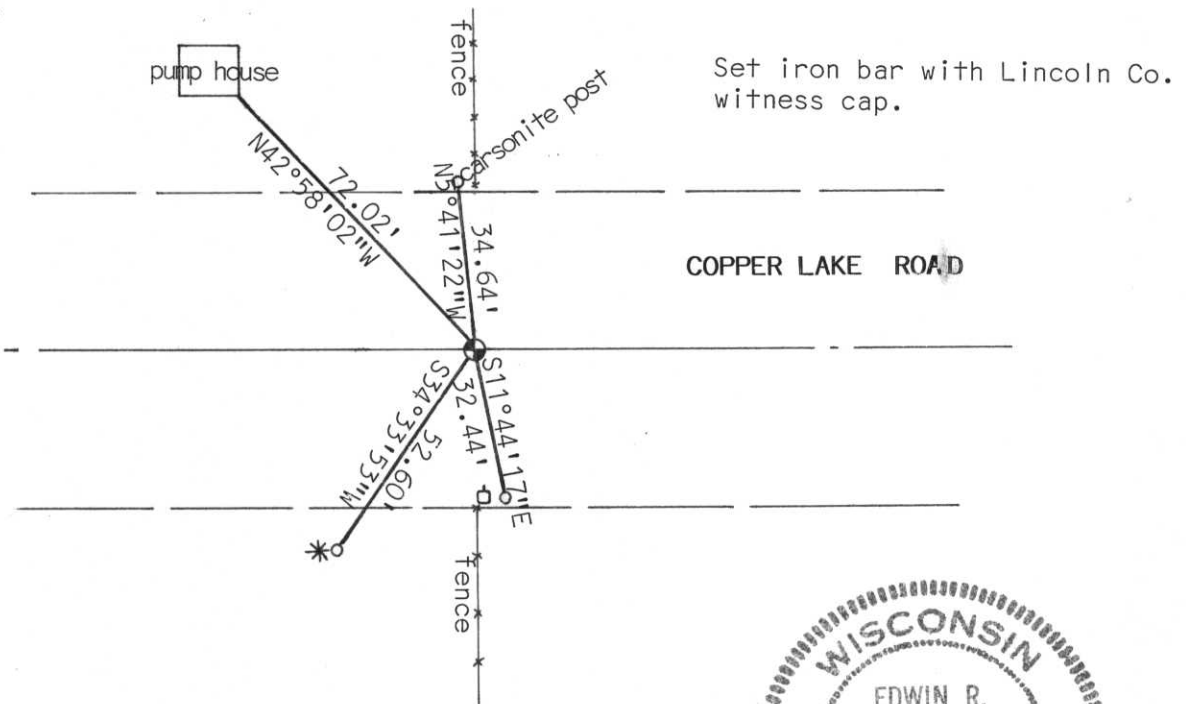
(b) (f) (g) (h) Description of monument found at this corner and if it was accepted, state all evidence (material, testimonial, occupational, plats, records, other monuments) used as a basis for accepting. If not accepted or if nothing was found, state evidence used as basis for establishing location. If reestablished through lost corner proportionate methods, indicate all monuments, distances and directions used to establish.

Dug with backhole 10' X 10' X 4' hole in blacktop pav't. Found no evidence of corner. roadway was dug at corner location for water line for boy's school. Assumed corner was destroyed during this construction.

Set Lincoln County Berntsen Monument at fence line and centerline of roadway. Assumed this was best evidence of corner location. Included corner in Section Traverse. Corner fit Section well.

**RECEIVED AT LINCOLN COUNTY
COURTHOUSE THIS 15th DAY
OF May 19. 97
Pat Proeber
TAX DESCRIPTION OFFICE**

(c) (d) (e) Plan view of corner with ties to at least 4 witness monuments. If in disagreement with previously established corner, show the distances between the two corners and also indicate the ties to the disputed corner.



(i) I, Edwin R. Abendroth RLS No. S-798
(type or print name) certify that the corner location on this record was determined by me or under my direction and control and that this U.S. Public Land Survey Monument Record is correct and complete to the best of my knowledge and belief.



Edwin R. Abendroth 5-14-97
Signature Date

Index No. Q-9