

U.S. PUBLIC LAND SURVEY MONUMENT RECORD

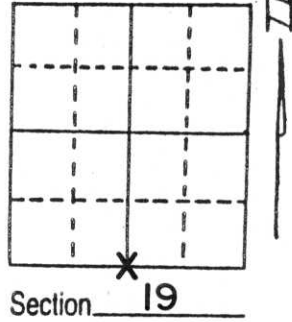
Note: This form is intended and designed to fulfill all requirements of Wisconsin Administrative Code, Chapter A-E 5.02, U.S. Public Land Survey Monument Record (3) (a) (b) (c) (d) (e) (f) (g) (h) (i). An additional sheet may be added if necessary to conform with said requirements.

(a) Corner location: Township 33 North

Range 7 East

Town/~~City/Village~~ BIRCH

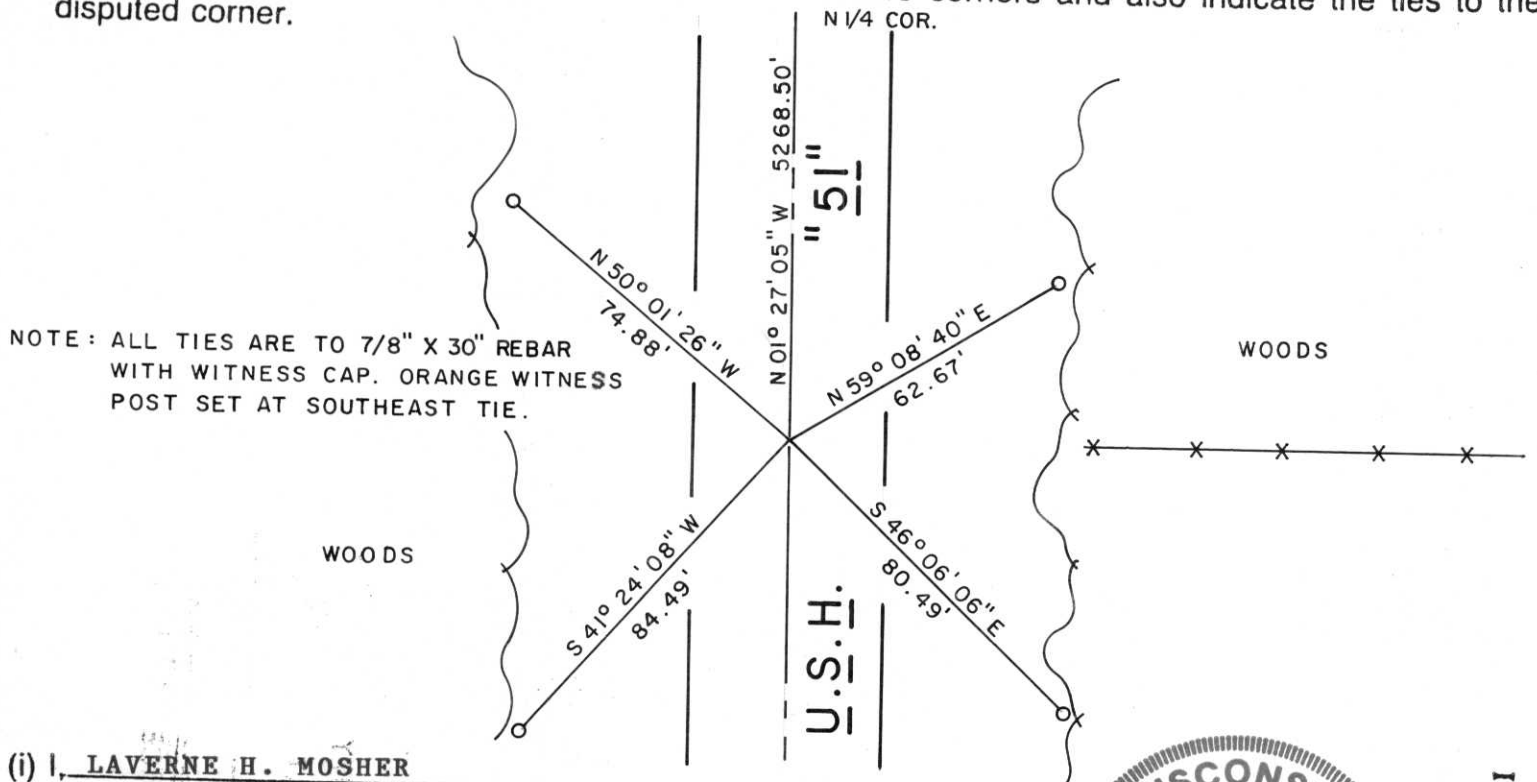
County LINCOLN



(b) (f) (g) (h) Description of monument found at this corner and if it was accepted, state all evidence (material, testimonial, occupational, plats, records, other monuments) used as a basis for accepting. If not accepted or if nothing was found, state evidence used as basis for establishing location. If reestablished through lost corner proportionate methods, indicate all monuments, distances and directions used to establish.

Original corner - Wood Post (1854?). No Remonumentation or survey notes found per County Surveyor records save for old Highway "51" R/W plat showing corner on road centerline. Commenced traverse of Section 19 to ascertain corner point. Corner was established at intersection of old fence line running to East and roadway centerline. No monument placed at corner because of heavy traffic. A section summary sheet placed on file at County Surveyor's Office.

(c) (d) (e) Plan view of corner with ties to at least 4 witness monuments. If in disagreement with previously established corner, show the distances between the two corners and also indicate the ties to the disputed corner.



NOTE: ALL TIES ARE TO 7/8" X 30" REBAR WITH WITNESS CAP. ORANGE WITNESS POST SET AT SOUTHEAST TIE.

(i) I, LAVERNE H. MOSHER

(type or print name) certify that the corner location on this record was determined by me or under my direction and control and that this U.S. Public Land Survey Monument Record is correct and complete to the best of my knowledge and belief.

Laverne H. Mosher

Signature

JUNE 12, 1995

Date



Index No. Q-13









