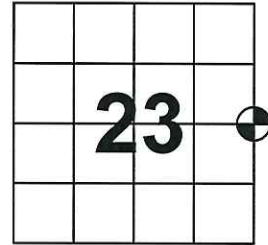


U.S. PUBLIC LAND SURVEY MONUMENT RECORD

Note: This form is intended and designed to fulfill all requirements of Wisconsin Administrative Code, Chapter A-E 7.08, U.S. Public Land Survey Monument Record (3) (a) (b) (c) (d) (e) (f) (g) (h) (i). An additional sheet may be added if necessary to conform with said requirements.

(a) Corner location: Township 33 North
 Range 7 East
 Town/City/Village Birch
 County Lincoln

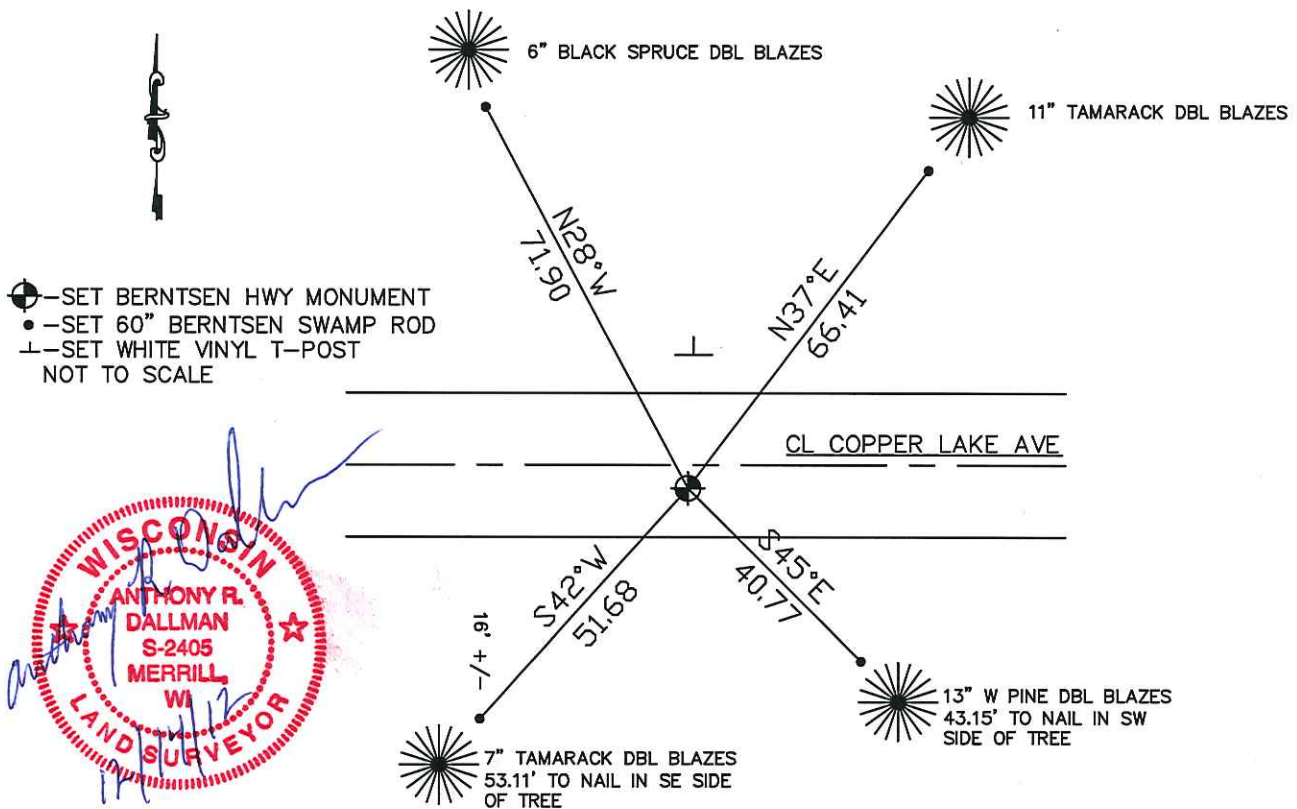


(b) (f) (g) (h) Description of monument found at this corner and if it was accepted, state all evidence (material, testimonial, occupational, plats, records, other monuments) used as basis for accepting. If not accepted or if nothing was found, state evidence used as basis for establishing location. If reestablished through lost corner proportionate methods, indicate all monuments, distances and directions used to establish.

Oct. 1834 – Prentice, Jackson L. Set corner post.
 Ties: Spruce 10 N44°W 1.26 Chains
 Spruce 10 N10°E 1.57 Chains

April 2012 – Dallman, Anthony R. Set Berntsen Hwy monument 8" below grade 2.5' South of CL Copper Lake Ave. by using the West 1/4 Corner of Section 23 and CL of Copper Lake Ave. to the west and the Section line between the NE and SE Corners of Section 23. Did not dig for this corner due to it falling in very wet swamp area. Set ties as shown below:

(c) (d) (e) Plan view of corner with ties to at least 4 witness monuments. If in disagreement with previously established corner, show the distance between the two corners and also indicate the ties to the disputed corner.



— SET BERNTSEN HWY MONUMENT
 — SET 60" BERNTSEN SWAMP ROD
 — SET WHITE VINYL T-POST
 NOT TO SCALE



(i) I, Anthony R. Dallman
 (type or print name) certify that the corner location on this record was determined by me or under my direction and control and that this U.S. Public Land Survey Monument Record is correct and complete to the best of my knowledge and belief.

Anthony R. Dallman
 Signature

12/14/12
 Date

Index No. 0-21









