

# U.S. PUBLIC LAND SURVEY MONUMENT RECORD

NOTE: THIS FORM IS INTENDED AND DESIGNED TO FULFILL ALL REQUIREMENTS OF WISCONSIN ADMINISTRATIVE CODE, CHAPTER A-E 7.08, U.S. PUBLIC LAND SURVEY MONUMENT RECORD (3)(a)(b)(c)(d)(e)(f)(g)(h)(i). ADDITIONAL SHEETS MAY BE NECESSARY TO CONFORM TO SAID REQUIREMENTS.

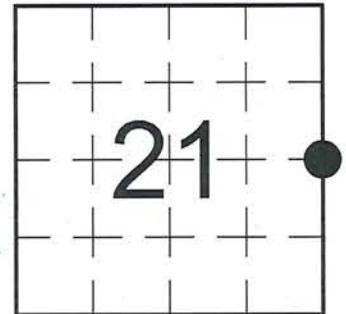
T 33 N, R 7 E

**(a) CORNER LOCATION:**

EAST QUARTER CORNER, SECTION 21  
 TOWNSHIP 33 NORTH  
 RANGE 7 EAST  
 TOWN OF BIRCH  
 LINCOLN COUNTY  
 WISCONSIN

**(b) HISTORY OF ORIGINAL CORNER:**

ORIGINAL SURVEYOR: Jackson L. Prentice; Set post  
 COMMENCING DATE: October 14, 1854  
 COMPLETION DATE: October 26, 1854  
 ORIGINAL BEARING TREES:  
 12" Ash; N 64° W; 7 links  
 10" Ash; S 74° E; 36 links

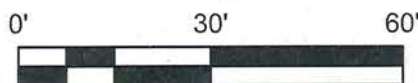


**(f)(g)(h) DESCRIPTION OF MONUMENT FOUND AT THIS CORNER AND IF IT WAS ACCEPTED. STATE ALL EVIDENCE (MATERIAL, TESTIMONIAL, OCCUPATIONAL, PLATS, RECORDS, OTHER MONUMENTS) USED AS A BASIS FOR ESTABLISHING LOCATION. IF RE-ESTABLISHING THROUGH LOST CORNER PROPORTIONATE METHODS, INDICATE ALL MONUMENTS, DISTANCES, AND DIRECTIONS USED TO ESTABLISH. INDICATE TYPE OF MONUMENTS FOUND OR SET.**

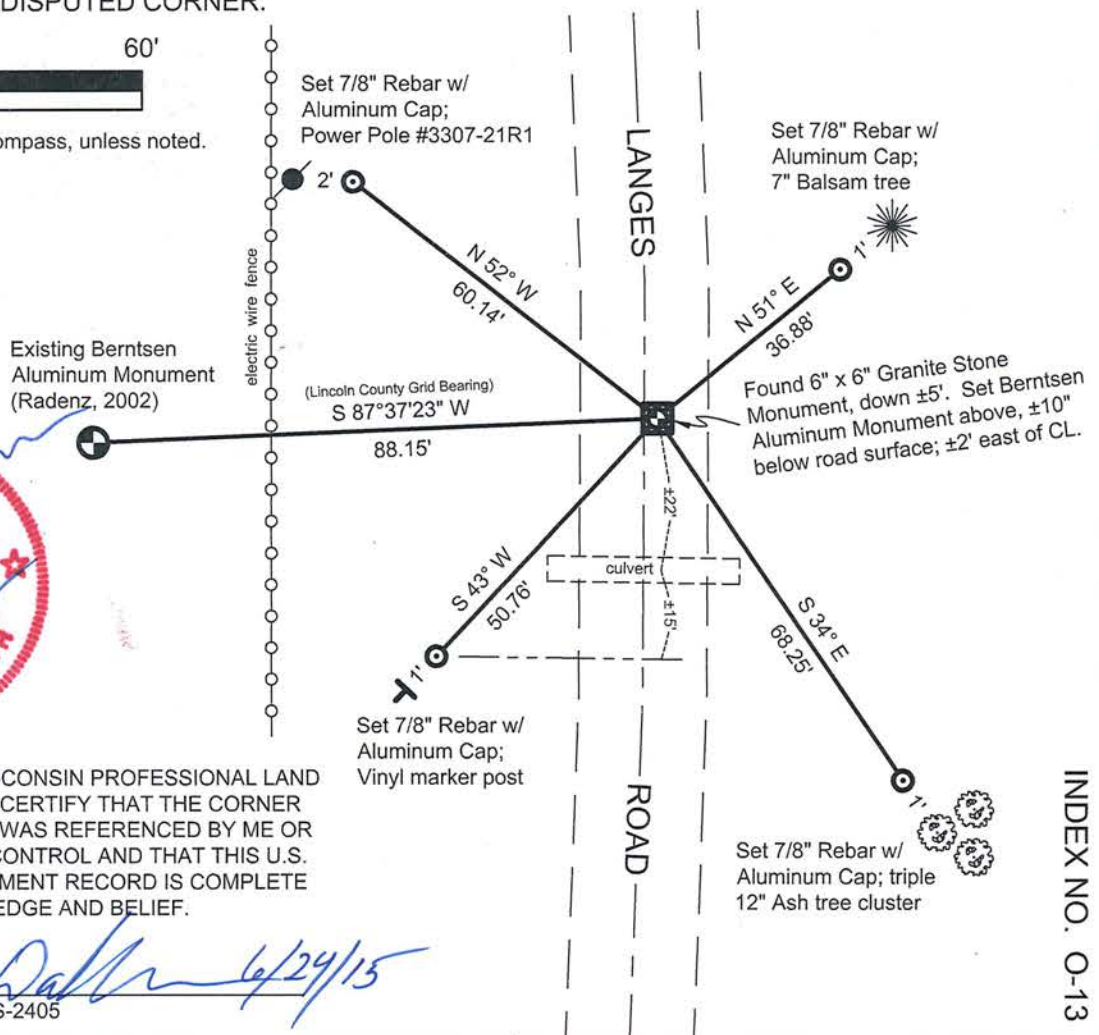
10/07/2002 - T. Radenz, PLS-2095, searched for the corner and found no evidence of the original wood post or a stone. A downed fence line to the west was the only occupation remaining in all directions. The fence was held for distance north to south because it fit well in terms of a forty split with an existing fence line along the north line of the Assessor's Plat of Copper Lake Lots. The East-West position of the corner was based on a straight line between the found 6" x 6" Stone Monuments at the northeast and southeast corner of Section 21. A Berntsen Monument was set for the corner position of the East 1/4 Corner of Section 21. He set reference ties to perpetuate the corner location.

06/17/2015 - I, Anthony R. Dallman, PLS-2405, after reviewing aerial and original note evidence, and observing that many corners in this area had been remonumented previously with stone monuments, I determined that a stone monument may exist in Langes Road. I dug in Langes Road with the help of a county gradall and found a 6" x 6" Granite Stone Monument, 24" long, down ±5' under the road surface. The Stone was laying flat; however, when tipped plumb it fell into a vertical hole and remained upright. The remains of old fence posts running north and west, laying flat, were also observed at the same level as the Stone. I accept this Granite Stone Monument as marking the original position of the East 1/4 Corner of Section 21. I set a new Berntsen Aluminum Monument above the Stone, the top of said Aluminum Monument now being ±10" below the gravel road surface. I set new reference ties and measured to the previous Aluminum Monument as shown in the sketch below.

**(c)(d)(e) PLAN VIEW OF THE CORNER WITH TIES TO AT LEAST FOUR WITNESSES. IF IN DISAGREEMENT WITH PREVIOUSLY ESTABLISHED CORNER, SHOW THE DISTANCES BETWEEN THE TWO CORNERS AND ALSO THE TIES TO THE DISPUTED CORNER.**



- Tie bearings by hand-held compass, unless noted.
- Tie distances by steel tape.



I, ANTHONY R. DALLMAN, WISCONSIN PROFESSIONAL LAND SURVEYOR, S-2405, HEREBY CERTIFY THAT THE CORNER LOCATION ON THIS RECORD WAS REFERENCED BY ME OR UNDER MY DIRECTION AND CONTROL AND THAT THIS U.S. PUBLIC LAND SURVEY MONUMENT RECORD IS COMPLETE TO THE BEST OF MY KNOWLEDGE AND BELIEF.

*Anthony R. Dallman* 6/29/15  
 ANTHONY R. DALLMAN, PLS S-2405

INDEX NO. 0-13

# U.S. PUBLIC LAND SURVEY MONUMENT RECORD

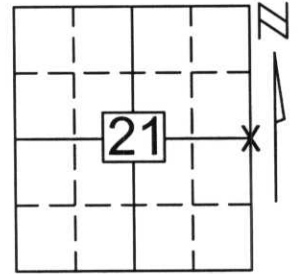
Note: This form is intended and designed to fulfill all requirements of Wisconsin Administrative Code, Chapter A-E 5.02, U.S. Public Land Survey Monument Record (3)(a)(b)(c)(d)(e)(f)(g)(h)(i). An additional sheet may be added if necessary to conform with said requirements.

(a) Corner location: Township 33 North

Range 7 East

Town/City/Village BIRCH

County LINCOLN

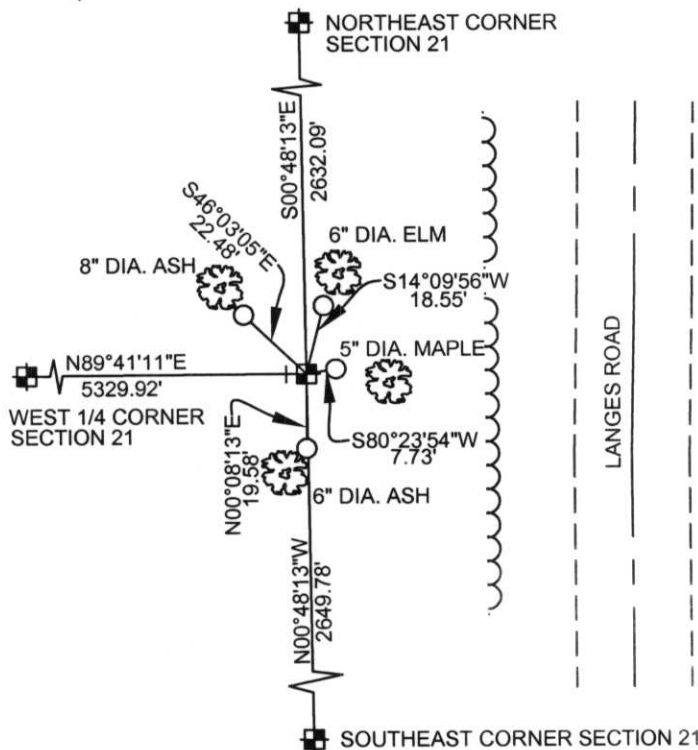


Section 21

(b)(f)(g)(h) Description of monument found at this corner and if it was accepted, state all evidence (material, testimonial, occupational, plats, records, other monuments) used as a basis for accepting. If not accepted or if nothing was found, state evidence used as basis for establishing location. If reestablished through lost corner proportionate methods, indicate all monuments, distances and directions used to establish.

WE SEARCHED FOR THE EAST 1/4 CORNER AND FOUND NO EVIDENCE OF THE ORIGINAL WOOD POST OR A STONE. A DOWNED FENCE LINE TO THE WEST WAS THE ONLY OCCUPATION REMAINING IN ALL DIRECTIONS. THE FENCE WAS HELD FOR DISTANCE NORTH TO SOUTH BECAUSE IT FIT WELL IN TERMS OF A FORTY SPLIT WITH AN EXISTING FENCE ALONG THE NORTH LINE OF THE ASSESSOR'S PLAT OF COPPER LAKE LOTS. THE EAST-WEST POSITION OF THE CORNER WAS BASED ON A STRAIGHT LINE BETWEEN THE FOUND 6" x 6" STONE MONUMENTS AT THE NORTHEAST AND SOUTHEAST CORNERS OF SECTION 21. A BERNTSEN MONUMENT WAS SET FOR THE CORNER POSITION OF THE EAST 1/4 CORNER OF SECTION 21.

(c)(d)(e) Plan view of corner with ties to at least 4 witness monuments. If in disagreement with previously established corner, show the distances between the two corners and also indicate the ties to the disputed corner.



RECEIVED AT LINCOLN COUNTY  
COURTHOUSE THIS 14<sup>TH</sup> DAY  
OF October 20 02  
LAND INFORMATION OFFICE

COORDINATES ARE REFERENCED TO THE LINCOLN COUNTY COORDINATE SYSTEM AS DEVELOPED BY THE WISCONSIN DEPARTMENT OF TRANSPORTATION AND WERE DETERMINED BY GPS OBSERVATIONS ON CONTROL POINTS AS SUPPLIED BY LINCOLN COUNTY.

BEARINGS ARE REFERENCED TO LINCOLN COUNTY COORDINATE SYSTEM.

- - SECTION CORNER
- - SET 1" I.D. x 18" IRON PIPE WEIGHING 1.68 LBS/LIN. FT.
- ⊥ - SET CARSONITE POST

NOTE: ALL TIE ARE APPROXIMATELY 2 FEET FROM BASE OF TREES.

N= 177096.3344  
E= 412776.7830

NORTH

NOT TO SCALE

(i) I, Thomas A. Radenz, RLS certify that the corner location on this record was determined by me or under my direction and control and that this U.S. Public Land Survey Monument Record is correct and complete to the best of my knowledge and belief.

Signature Thomas A. Radenz Date 10/7/02



Index No. 0-13

























LINCOLN COUNTY DISTURBANCE PERMIT FOR AGRICULTURE