

# U.S. PUBLIC LAND SURVEY MONUMENT RECORD

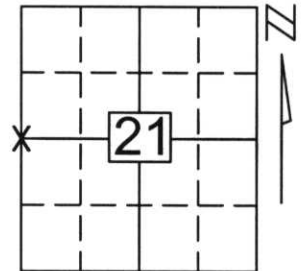
Note: This form is intended and designed to fulfill all requirements of Wisconsin Administrative Code, Chapter A-E 5.02, U.S. Public Land Survey Monument Record (3)(a)(b)(c)(d)(e)(f)(g)(h)(i). An additional sheet may be added if necessary to conform with said requirements.

(a) Corner location: Township 33 North

Range 7 East

Town/City/Village BIRCH

County LINCOLN



Section 21

(b)(f)(g)(h) Description of monument found at this corner and if it was accepted, state all evidence (material, testimonial, occupational, plats, records, other monuments) used as a basis for accepting. If not accepted or if nothing was found, state evidence used as basis for establishing location. If reestablished through lost corner proportionate methods, indicate all monuments, distances and directions used to establish.

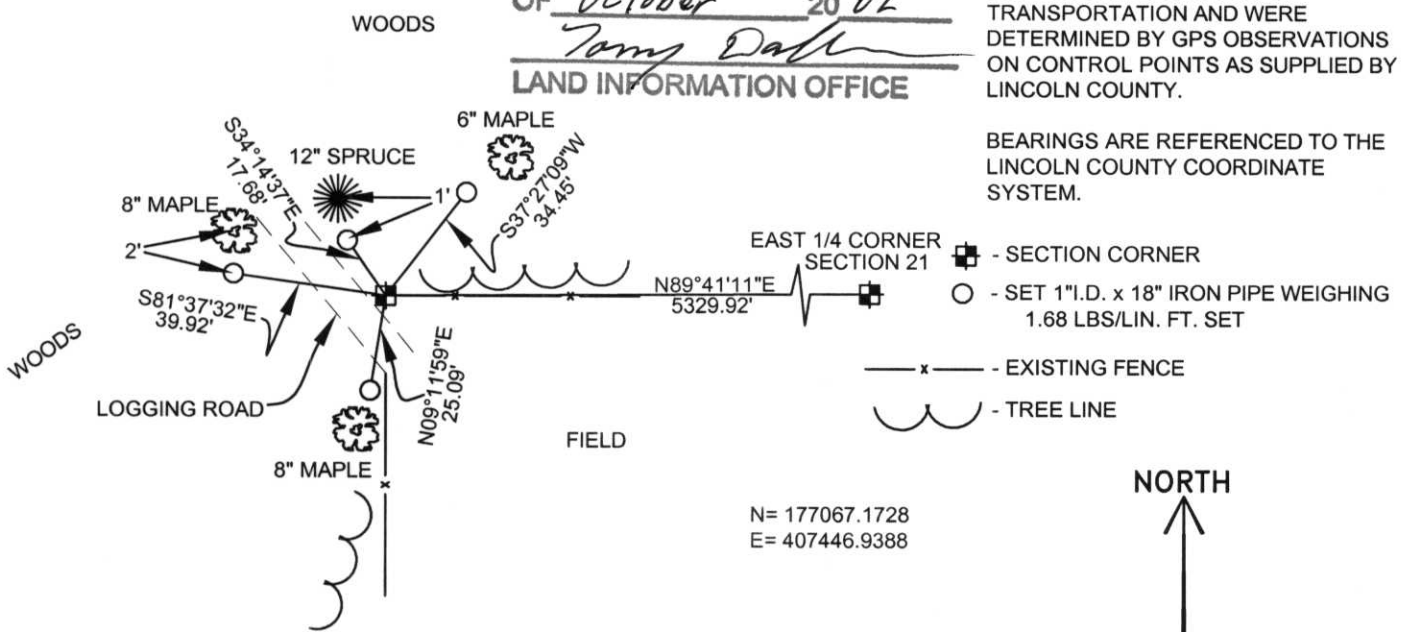
WE FOUND A 6" x 6" GRANITE STONE AT THE INTERSECTION OF A FENCE LINE RUNNING EAST, SOUTH, AND NORTH. THE STONE WAS FOUND ±4 FEET OFF THE CENTERLINE OF AN EXISTING LOGGING ROAD. WE HELD THE STONE AS BEST EVIDENCE OF THE WEST 1/4 CORNER OF SECTION 21.

(c)(d)(e) Plan view of corner with ties to at least 4 witness monuments. If in disagreement with previously established corner, show the distances between the two corners and also indicate the ties to the disputed corner.

RECEIVED AT LINCOLN COUNTY  
COURTHOUSE THIS 14<sup>TH</sup> DAY  
OF October 20 02  
*Tommy Daff*  
LAND INFORMATION OFFICE

COORDINATES ARE REFERENCED TO THE LINCOLN COUNTY COORDINATE SYSTEM AS DEVELOPED BY THE WISCONSIN DEPARTMENT OF TRANSPORTATION AND WERE DETERMINED BY GPS OBSERVATIONS ON CONTROL POINTS AS SUPPLIED BY LINCOLN COUNTY.

BEARINGS ARE REFERENCED TO THE LINCOLN COUNTY COORDINATE SYSTEM.



(i) I, Thomas A. Radenz, RLS certify that the corner location on this record was determined by me or under my direction and control and that this U.S. Public Land Survey Monument Record is correct and complete to the best of my knowledge and belief.

*Thomas A. Radenz*  
Signature \_\_\_\_\_ Date 10/7/02



Index No. 0-9