

U.S. PUBLIC LAND SURVEY MONUMENT RECORD

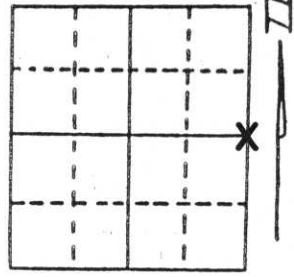
Note: This form is intended and designed to fulfill all requirements of Wisconsin Administrative Code, Chapter A-E 5.02, U.S. Public Land Survey Monument Record (3) (a) (b) (c) (d) (e) (f) (g) (h) (i). An additional sheet may be added if necessary to conform with said requirements.

(a) Corner location: Township 33 North

Range 7 East

Town/~~City/Village~~ BIRCH

County LINCOLN

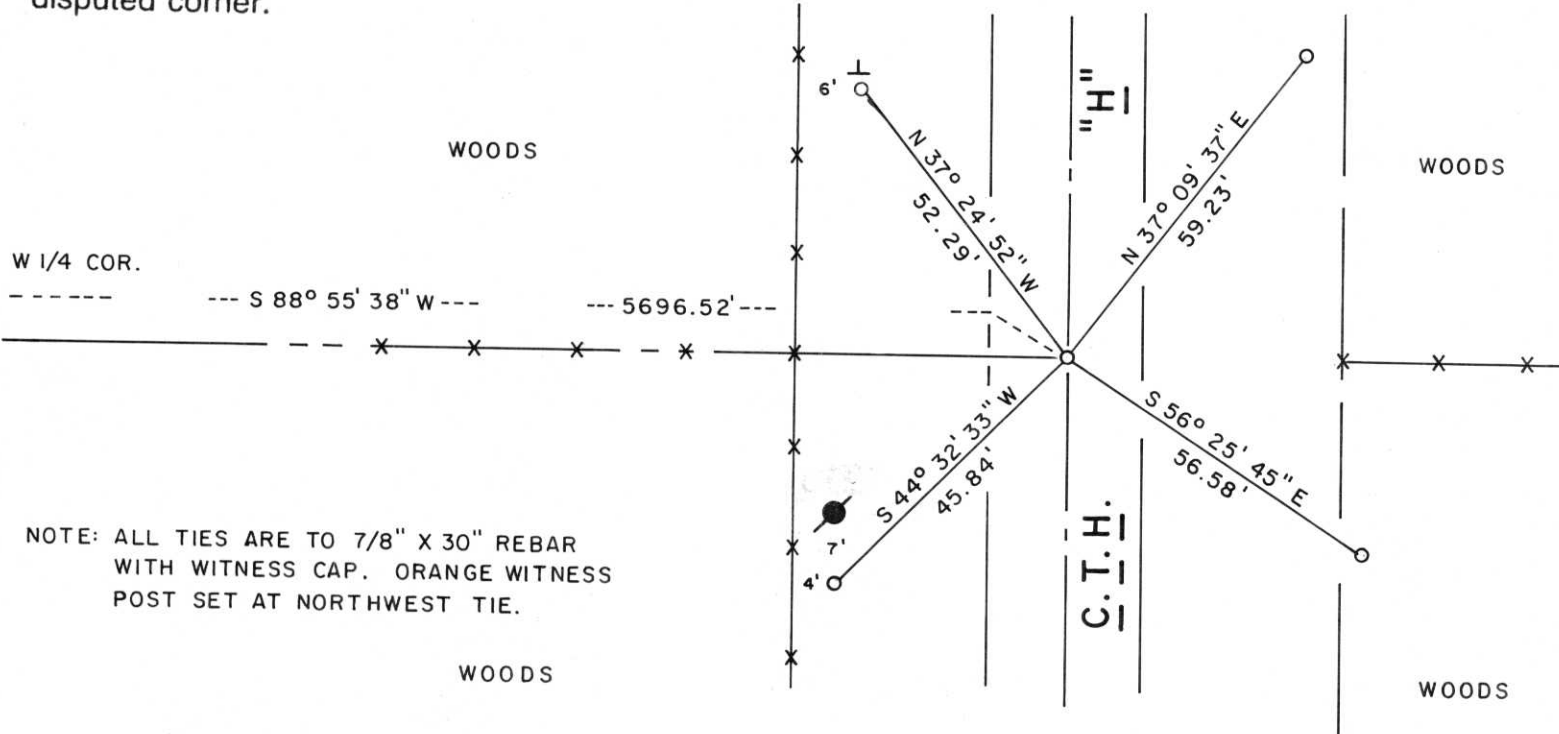


Section 19

(b) (f) (g) (h) Description of monument found at this corner and if it was accepted, state all evidence (material, testimonial, occupational, plats, records, other monuments) used as a basis for accepting. If not accepted or if nothing was found, state evidence used as basis for establishing location. If reestablished through lost corner proportionate methods, indicate all monuments, distances and directions used to establish.

Original Corner - Wood Post (1854?) No surveys or remonumentation notes could be found per records at County Surveyor's Office.
 This corner falls on centerline of C.T.H. "H" in area where roadway fill is about 7 feet deep. Did not dig for corner after consultation with Lincoln Co. Highway Commissioner and County Surveyor. Traverse from South 1/4 to West 1/4 to North 1/4 to Northeast corner to approximate Southeast corner, all in Section 19 was ran to determine corner position. Found small PK nail at center of road at fence lines running to East and West. Position of nail was in harmony with occupation lines and other Government corners alluded to, hence accepted as best evidence of corner. Set a 7/8" x 30" Rebar with Aluminum cap stamped 19|20 on top. Top of monument is recessed about 1" below blacktop roadway surface. A section summary sheet placed on file with County Surveyor's Office.

(c) (d) (e) Plan view of corner with ties to at least 4 witness monuments. If in disagreement with previously established corner, show the distances between the two corners and also indicate the ties to the disputed corner.



(i) I, LAVERNE H. MOSHER
 (type or print name) certify that the corner location on this record was determined by me or under my direction and control and that this U.S. Public Land Survey Monument Record is correct and complete to the best of my knowledge and belief.

Laverne H. Mosher

 Signature

JUNE 9, 1995

 Date



Index No. 0-5









