

U.S. PUBLIC LAND SURVEY MONUMENT RECORD

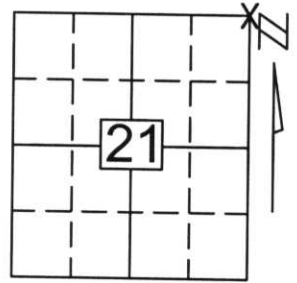
Note: This form is intended and designed to fulfill all requirements of Wisconsin Administrative Code, Chapter A-E 5.02, U.S. Public Land Survey Monument Record (3)(a)(b)(c)(d)(e)(f)(g)(h)(i). An additional sheet may be added if necessary to conform with said requirements.

(a) Corner location: Township 33 North

Range 7 East

Town/City/Village BIRCH

County LINCOLN



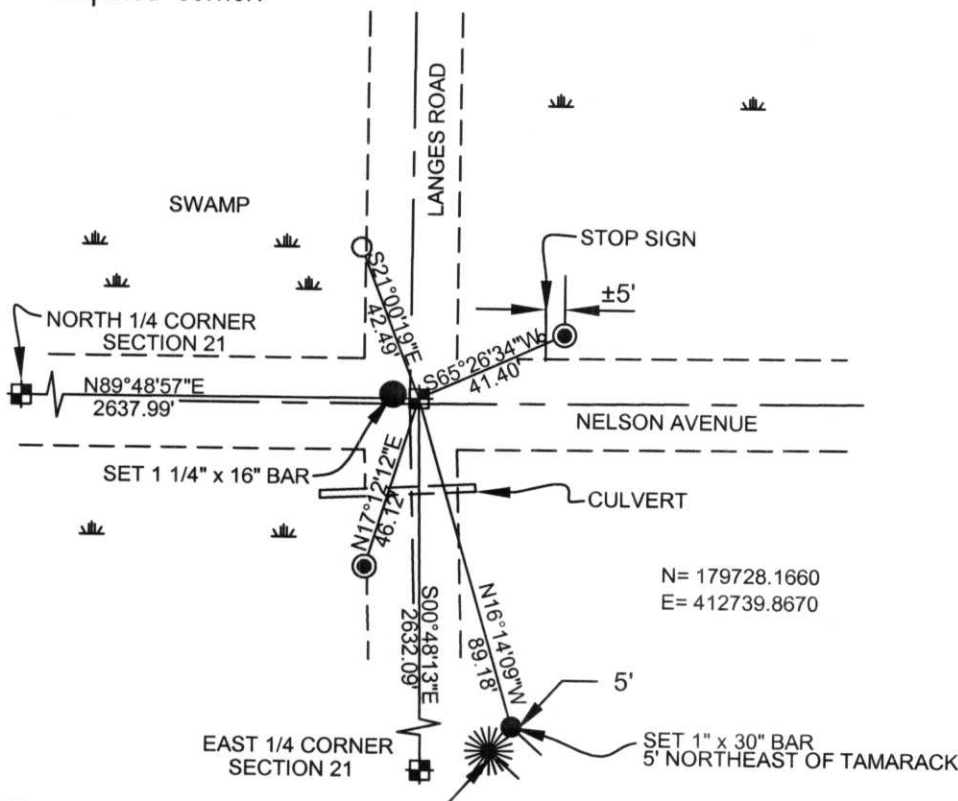
Section 21

(b)(f)(g)(h) Description of monument found at this corner and if it was accepted, state all evidence (material, testimonial, occupational, plats, records, other monuments) used as a basis for accepting. If not accepted or if nothing was found, state evidence used as basis for establishing location. If reestablished through lost corner proportionate methods, indicate all monuments, distances and directions used to establish.

WE DUG USING COUNTY SUPPLIED BACK HOE AND FOUND A 6" x 6" GRANITE STONE, 2.5 FEET BELOW THE ROAD SURFACE. WE HELD THE STONE AS BEST EVIDENCE OF THE ORIGINAL LOCATION OF THE NORTHEAST CORNER. A 1 1/4" x 16" BAR WAS SET ±.5' NORTHWEST OF CORNER. IN ADDITION TO A 3" x 2" SQUARE PIECE OF STEEL SET ON TOP OF STONE TO AID IN LOCATION.

RECEIVED AT LINCOLN COUNTY
COURTHOUSE THIS 14TH DAY
OF October 20 02
Tony Dallen
LAND INFORMATION OFFICE

(c)(d)(e) Plan view of corner with ties to at least 4 witness monuments. If in disagreement with previously established corner, show the distances between the two corners and also indicate the ties to the disputed corner.



COORDINATES ARE REFERENCED TO THE LINCOLN COUNTY COORDINATE SYSTEM AS DEVELOPED BY THE WISCONSIN DEPARTMENT OF TRANSPORTATION AND WERE DETERMINED BY GPS OBSERVATIONS ON CONTROL POINTS AS SUPPLIED BY LINCOLN COUNTY.

BEARINGS ARE REFERENCED TO LINCOLN COUNTY COORDINATE SYSTEM.

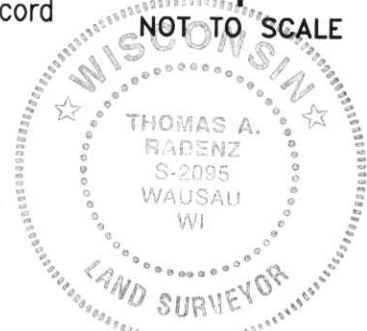
- ☒ - SECTION CORNER
- - SET 1" I.D. x 18" IRON PIPE WEIGHING 1.68 LBS/LIN. FT.
- - SET 1" x 30" REBAR
- ⊙ - SET 3/4" x 30" REBAR WITH LINCOLN COUNTY CAP.
- - SET 1 1/4" x 6" BAR

N = 179728.1660
E = 412739.8670

NORTH

(i) I, Thomas A. Radenz, RLS certify that the corner location on this record was determined by me or under my direction and control and that this U.S. Public Land Survey Monument Record is correct and complete to the best of my knowledge and belief.

Signature Thomas A. Radenz Date 10/7/02



Index No. M-13









