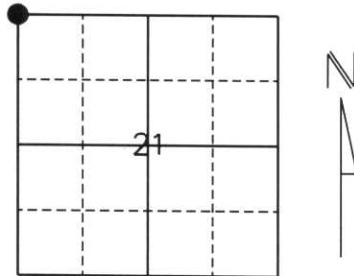


# U.S. PUBLIC LAND SURVEY MONUMENT RECORD

Note: This form is intended and designed to fulfill all requirements of Wisconsin Administrative Code, Chapter A-E 5.02, U.S. Public Land Survey Monument Record (3) (a) (b) (c) (d) (e) (f) (g) (h) (i). An additional sheet may be added if necessary to conform with said requirements.

(a) Corner location: Township 33 North  
 Range 7 East  
 Town/City/Village Birch  
 County Lincoln



Section 21

(b) (f) (g) (h) Description of monument found at this corner and if it was accepted, state all evidence (material, testimonial, occupational, plats, records, other monuments) used as a basis for accepting. If not accepted or if nothing was found, state evidence used as a basis for establishing location. If reestablished through lost corner proportionate methods, indicate all monuments, distances and directions used to establish.

History of original corner establishment:

Originally Surveyed October 26, 1854 by Jackson L. Prentice. Original corner was a wooden post with bearing trees:  
 14" Hemlock, S42°E, 43 lks.  
 10" Hemlock, S24°W, 20 lks.  
 14" Hemlock, N61°E, 45 lks.  
 10" Hemlock, N39°W, 25 lks.

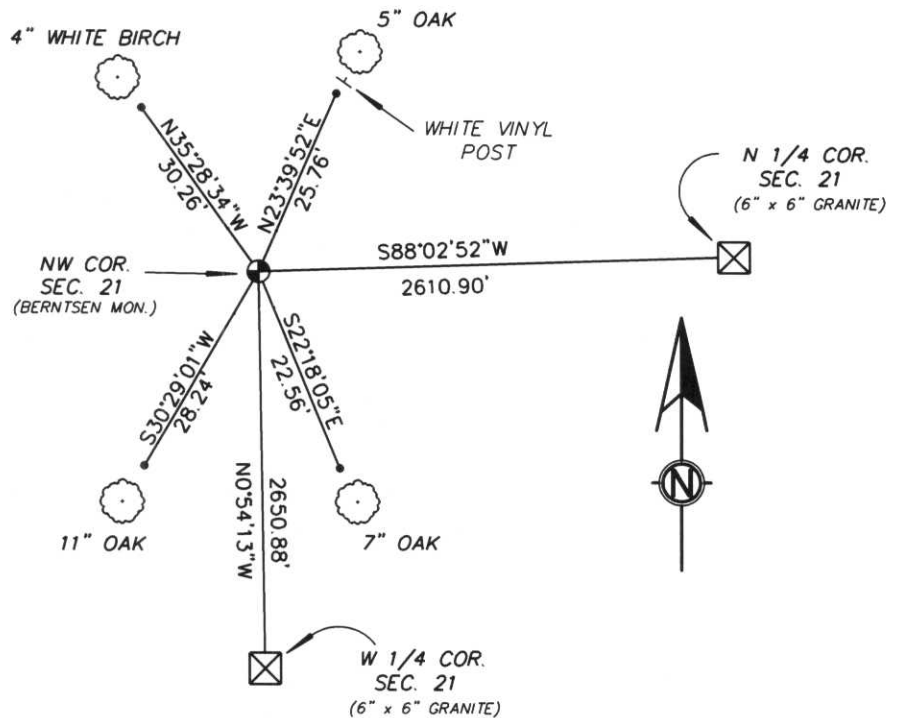
RECEIVED AT LINCOLN COUNTY  
 COURTHOUSE THIS 12<sup>TH</sup> DAY  
 OF December 20 02  
*Tommy Walker*  
 LAND INFORMATION

Description of corner evidence found:

We dug for the corner in a large area at the intersection of Nelson Avenue and the extension of a fenceline from the north and from the south. No evidence of corner was found. We set a Bernsten Monument at the intersection of fencelines and centerline as best available evidence. Tied to witness monuments approx. 2 feet from bearing trees.

(c) (d) (e) Plan view of corner with ties to at least 4 witness monuments. If in disagreement with previously established corner, show the distances between the two corners and also indicate the ties to the disputed corner.

- \* NOTE: Drawing not to scale.
- All ties are to 7/8" Rebar with Lincoln County Caps approximately 2 feet away.
- 7/8" REBAR W/ L.C. CAPS



(i) I, William W. Nutter RLS, S-2299  
 (type or print name) certify that the corner location on this record was determined by me or under my direction and control and that this U.S. Public Land Survey Monument Record is correct and complete to the best of my knowledge and belief.

*William W. Nutter, RLS*  
 \_\_\_\_\_  
 Signature

12-18-2002  
 \_\_\_\_\_  
 Date

Index No. 11-9









