

# U.S. PUBLIC LAND SURVEY MONUMENT RECORD

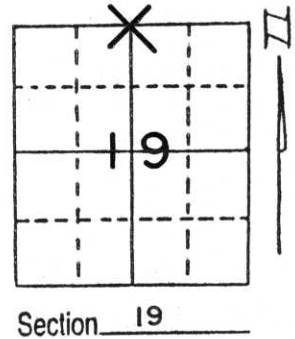
Note: This form is intended and designed to fulfill all requirements of Wisconsin Administrative Code, Chapter A-E 5.02, U.S. Public Land Survey Monument Record (3) (a) (b) (c) (d) (e) (f) (g) (h) (i). An additional sheet may be added if necessary to conform with said requirements.

(a) Corner location: Township 33 North

Range 7 East ~~West~~

Town/Village BIRCH

County LINCOLN

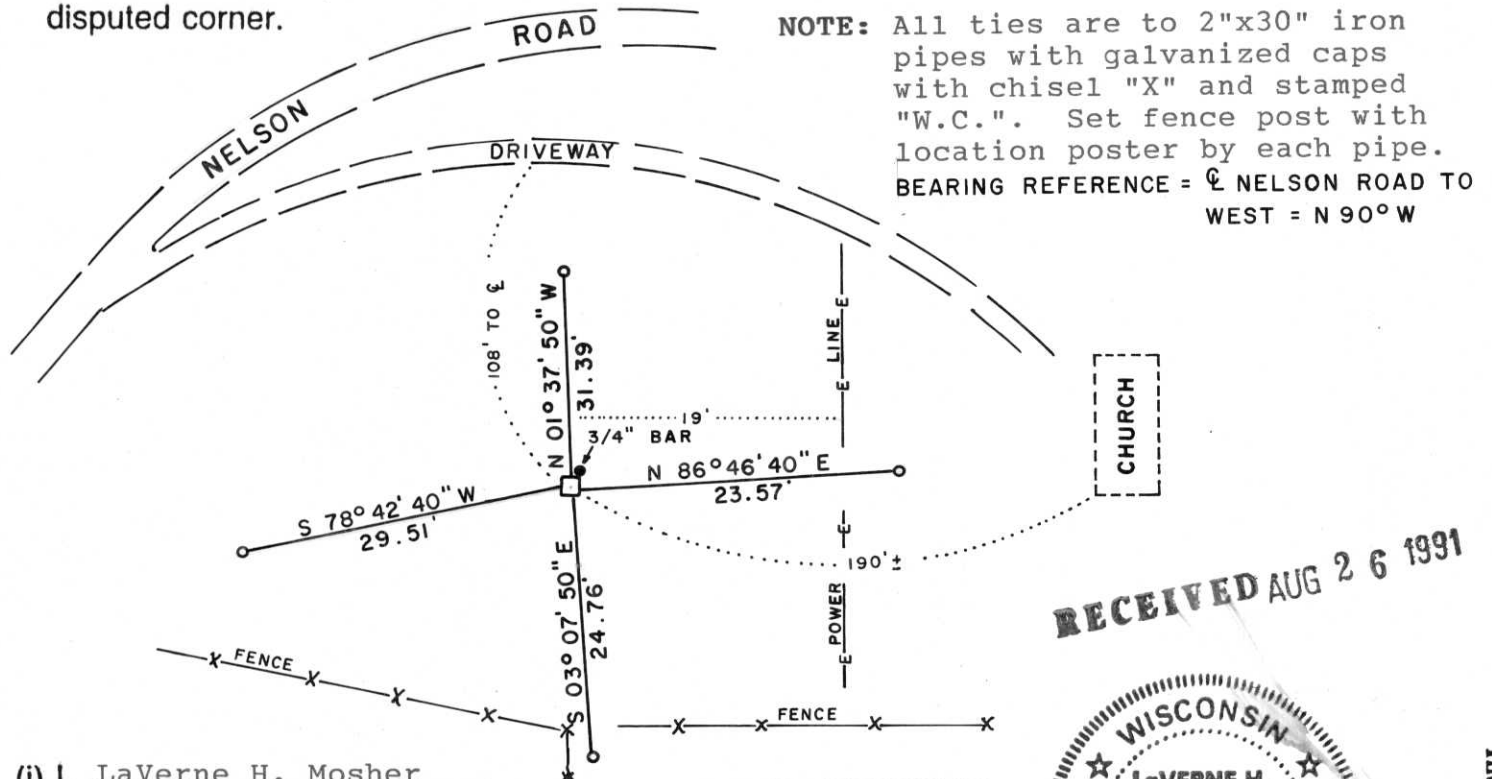


Section 19

(b) (f) (g) (h) Description of monument found at this corner and if it was accepted, state all evidence (material, testimonial, occupational, plats, records, other monuments) used as a basis for accepting. If not accepted or if nothing was found, state evidence used as basis for establishing location. If reestablished through lost corner proportionate methods, indicate all monuments, distances and directions used to establish.

Reference sheet provided by Wisconsin Department of Transportation Rhinelander office indicated a 6"x6" red granite stone was recovered on June 23, 1971, by Munninghoff, 20 feet North and 2 feet West of fence corner. On this date, we recovered said 6" square red granite with top scribed "1/4" protruding about 2 inches above ground surface. Stone located in wooded area about 190 feet West of Grace Baptist Church, 108 feet South of gravel driveway to church. Accepted stone as best evidence of corner location and tied out same.

(c) (d) (e) Plan view of corner with ties to at least 4 witness monuments. If in disagreement with previously established corner, show the distances between the two corners and also indicate the ties to the disputed corner.



**RECEIVED AUG 26 1991**



(i) I, LaVerne H. Mosher  
 (type or print name) certify that the corner location on this record was determined by me or under my direction and control and that this U.S. Public Land Survey Monument Record is correct and complete to the best of my knowledge and belief.

LaVerne H. Mosher  
 Signature

AUGUST 3, 1991  
 Date

Index No. M-3

T33N

R7E

June 23, 1971



N 548,451.03  
E 2,087,175.42  
N. 1/4 Cor. Sec. 19-33-7E  
6x6" Red Granite stone  
found by Munnighoff 6/23/71

20'

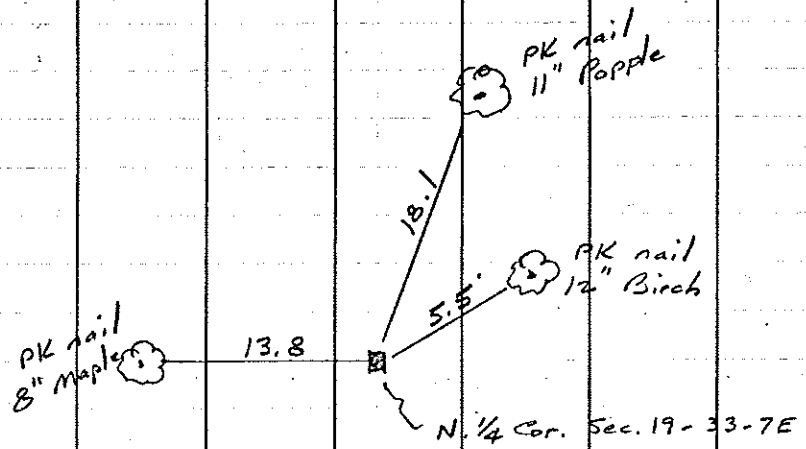
2'

old fence

old fence

Project I.D. 1173-5-00 1.4 Mi.N.  
Merrill-C.T.H. "s" U.S.H. 51  
Freeway Lincoln County Wm. Scherer  
Surveyor Received from Division of  
Hwy's. Jan. 11. 1973

REFERENCES



152



















