

U.S. PUBLIC LAND SURVEY MONUMENT RECORD

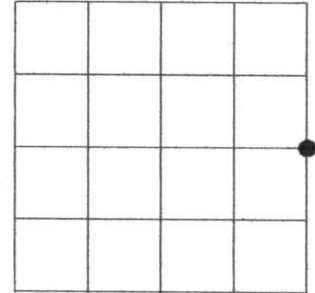
Note: This form is intended and designed to fulfill all requirements of the Wisconsin Administrative Code, Chapter A-E 7.08 U.S. Public Land Monument Record (3)(a)(b)(c)(d)(e)(f)(g)(h)(i). An additional sheet may be added if necessary to conform with said requirements.

(a) CORNER LOCATION:

COORDINATES

east quarter corner of Section 17
 Township 33 North
 Range 7 East
 Town of Birch
 County of Lincoln

North:
 East:
 Control Station:
 Latitude:
 Longitude:
 Datum Method



SECTION 17

(b) HISTORY OF ORIGINAL CORNER ESTABLISHMENT

Original Surveyor: J.L. Prentice
 Date of Survey: Commenced October 1834
 Completed October 1834

Original B.T.'S
 Linden 10" dia., S63°W 23 links
 (Basswood)
 Maple 10" dia., N84°E 40 links

(f)(g)(h) DESCRIPTION OF MONUMENT FOUND AT THIS CORNER AND IF IT WAS ACCEPTED, STATE ALL EVIDENCE (MATERIAL, TESTIMONIAL, OCCUPATIONS, PLATS, RECORDS, OTHER MONUMENTS) USED AS A BASIS FOR ESTABLISHING LOCATION. IF NOT ACCEPTED OF IF NOTHING WAS FOUND, STATE EVIDENCE USED AS BASIS FOR ESTABLISHING LOCATION. IF REESTABLISHED THROUGH LOST CORNER PROPORTIONATE METHODS, INDICATE ALL MONUMENTS, DISTANCES AND DIRECTIONS USED TO ESTABLISH. INDICATE TYPE OF MONUMENT AND SIGN POST FOUND OR SET.

Original Surveyor: J.L. Prentice, at 40 chains set quarter post.

Robert K. Fergot: 11/18/91, recovered an 8" square granite stone for the East Quarter of Section 17.

Michael L. Oestreich: 5/3/05, recovered a 0.6' x 0.6' granite monument three feet south of an old fence bearing east and west. I then made witness ties as shown in plan below. See map of Survey by Oestreich Surveying & Mapping, LLC dated 5/4/05 for more survey data relating to the subdivision of Section 17.

(c)(d)(e) PLAN VIEW OF CORNER WITH TIES TO AT LEAST 4 WITNESS MONUMENTS. IF IN DISAGREEMENT WITH PREVIOUSLY ESTABLISHED CORNER, SHOW THE DISTANCE BETWEEN THE TWO CORNERS AND ALSO INDICATE THE TIES TO THE DISPUTED CORNER.

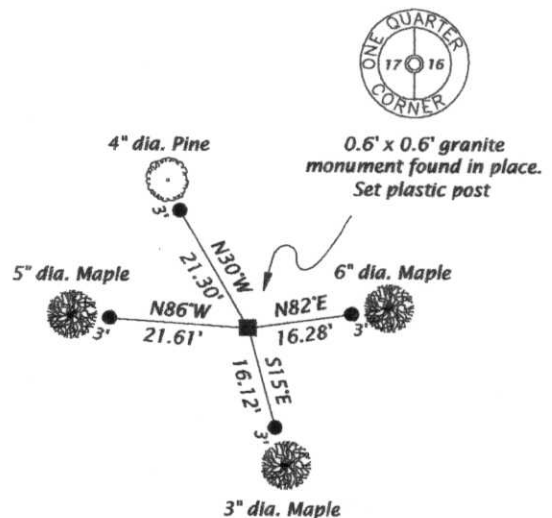
Bearings magnetic



Scale 1" = 30'

● = Set aluminum capped 0.87" dia. x 30" long iron rod.

RECEIVED BY LINCOLN COUNTY
 SURVEYOR THIS 24TH DAY
 OF January 20 06
Tony Dalk
 COUNTY SURVEYOR



(i) I, MICHAEL L. OESTREICH, REGISTERED LAND SURVEYOR NO. S-2118 HEREBY CERTIFY THAT THE CORNER LOCATION ON THIS RECORD WAS DETERMINED BY ME OR UNDER MY DIRECTION AND CONTROL AND THAT THIS U.S. PUBLIC LAND SURVEY MONUMENT RECORD IS CORRECT AND COMPLETE TO THE BEST OF MY KNOWLEDGE AND BELIEF.

Michael L. Oestreich
 SIGNATURE

1/23/06
 DATE



INDEX NO. K-9