

U.S. PUBLIC LAND SURVEY MONUMENT RECORD

NOTE: THIS FORM IS INTENDED AND DESIGNED TO FULFILL ALL REQUIREMENTS OF WISCONSIN ADMINISTRATIVE CODE, CHAPTER A-E 7.08, U.S. PUBLIC LAND SURVEY MONUMENT RECORD (3)(a)(b)(c)(d)(e)(f)(g)(h)(i). ADDITIONAL SHEETS MAY BE NECESSARY TO CONFORM TO SAID REQUIREMENTS.

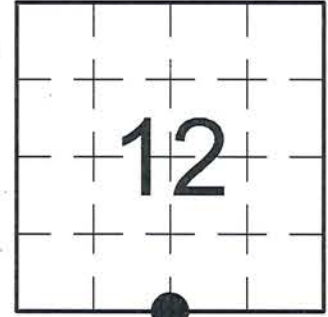
T 33 N, R 7 E

(a) CORNER LOCATION:

SOUTH QUARTER CORNER, SECTION 12
 TOWNSHIP 33 NORTH
 RANGE 7 EAST
 TOWN OF BIRCH
 LINCOLN COUNTY
 WISCONSIN

(b) HISTORY OF ORIGINAL CORNER:

ORIGINAL SURVEYOR: Jackson L. Prentice; Set Post
 COMMENCING DATE: October 14, 1854
 COMPLETION DATE: October 26, 1854
 ORIGINAL BEARING TREES:
 12" Balsam; N 14° W; 31 links
 10" Hemlock; S 85° E; 30 links



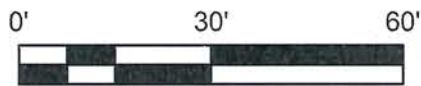
(f)(g)(h) DESCRIPTION OF MONUMENT FOUND AT THIS CORNER AND IF IT WAS ACCEPTED. STATE ALL EVIDENCE (MATERIAL, TESTIMONIAL, OCCUPATIONAL, PLATS, RECORDS, OTHER MONUMENTS) USED AS A BASIS FOR ESTABLISHING LOCATION. IF RE-ESTABLISHING THROUGH LOST CORNER PROPORTIONATE METHODS, INDICATE ALL MONUMENTS, DISTANCES, AND DIRECTIONS USED TO ESTABLISH. INDICATE TYPE OF MONUMENTS FOUND OR SET.

12/13/1995 - H. Warden, RLS-2182, found reference monuments as recorded in survey of Section 12. No other evidence was found. He set a Berntsen Survey Nail on line between reference monuments, and set additional reference monuments to perpetuate the corner location.

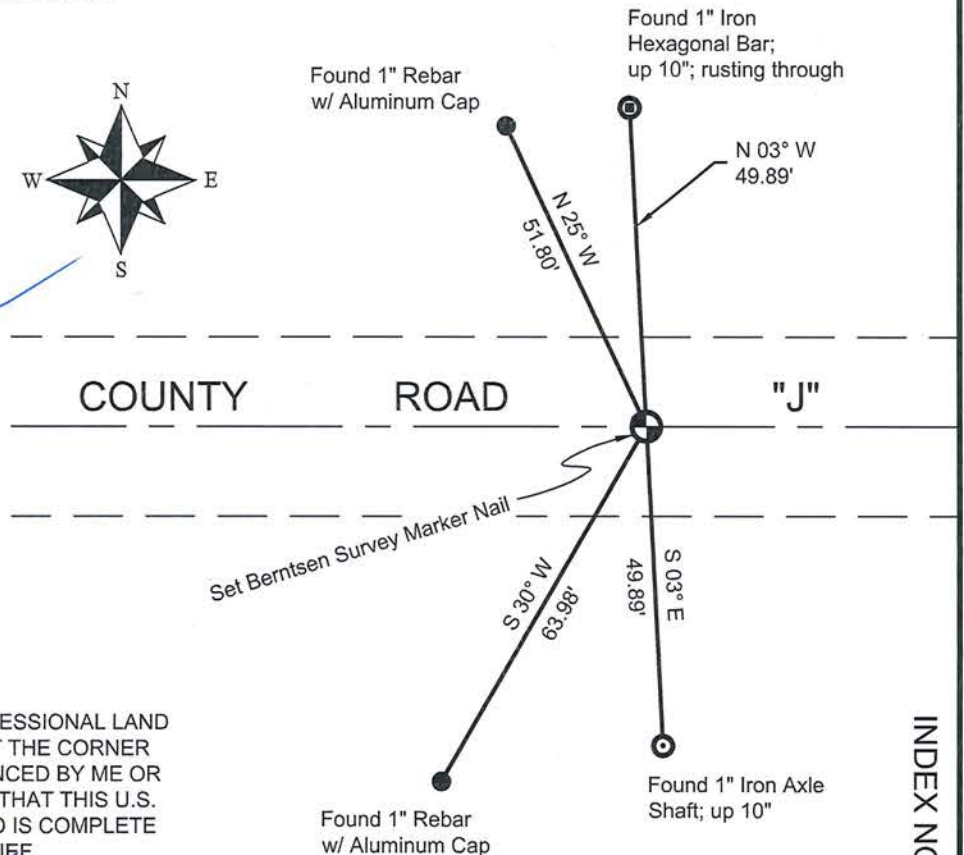
05/20/2015 - I, Anthony R. Dallman, PLS-2405, visited corner prior to road resurfacing. I found the existing Berntsen Survey Marker Nail and reference ties intact. Also found an erroneous Berntsen Survey Marker Nail; S 10° E, 0.27' from accepted Nail.

11/03/2015 - I, Anthony R. Dallman, PLS-2405, set a Berntsen Survey Marker Nail at the intersection of existing reference ties as shown in the sketch below.

(c)(d)(e) PLAN VIEW OF THE CORNER WITH TIES TO AT LEAST FOUR WITNESSES. IF IN DISAGREEMENT WITH PREVIOUSLY ESTABLISHED CORNER, SHOW THE DISTANCES BETWEEN THE TWO CORNERS AND ALSO THE TIES TO THE DISPUTED CORNER.



- Tie bearings by hand-held compass.
- Tie distances by steel tape.



I, ANTHONY R. DALLMAN, WISCONSIN PROFESSIONAL LAND SURVEYOR, S-2405, HEREBY CERTIFY THAT THE CORNER LOCATION ON THIS RECORD WAS REFERENCED BY ME OR UNDER MY DIRECTION AND CONTROL AND THAT THIS U.S. PUBLIC LAND SURVEY MONUMENT RECORD IS COMPLETE TO THE BEST OF MY KNOWLEDGE AND BELIEF.

Anthony R. Dallman
 ANTHONY R. DALLMAN, PLS S-2405

INDEX NO. 1-23

U.S. PUBLIC LAND SURVEY MONUMENT RECORD FOR LINCOLN COUNTY, WISCONSIN

Note: This form is intended and designed to fulfill all requirements of Wisconsin Administrative Code, Chapter A-E 5.02, U.S. Public Land Survey Monument Record (3) (a) (b) (c) (d) (e) (f) (g) (h) (i). Use additional sheet if necessary.

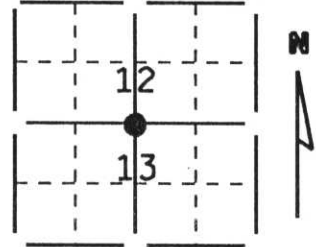
(a) The section, one quarter corner common to sections 12 & 13,

Township(s) 33 N, Range(s) 7 E

State plane coordinates: N _____
S _____

Town/City/Village Birch

County Lincoln

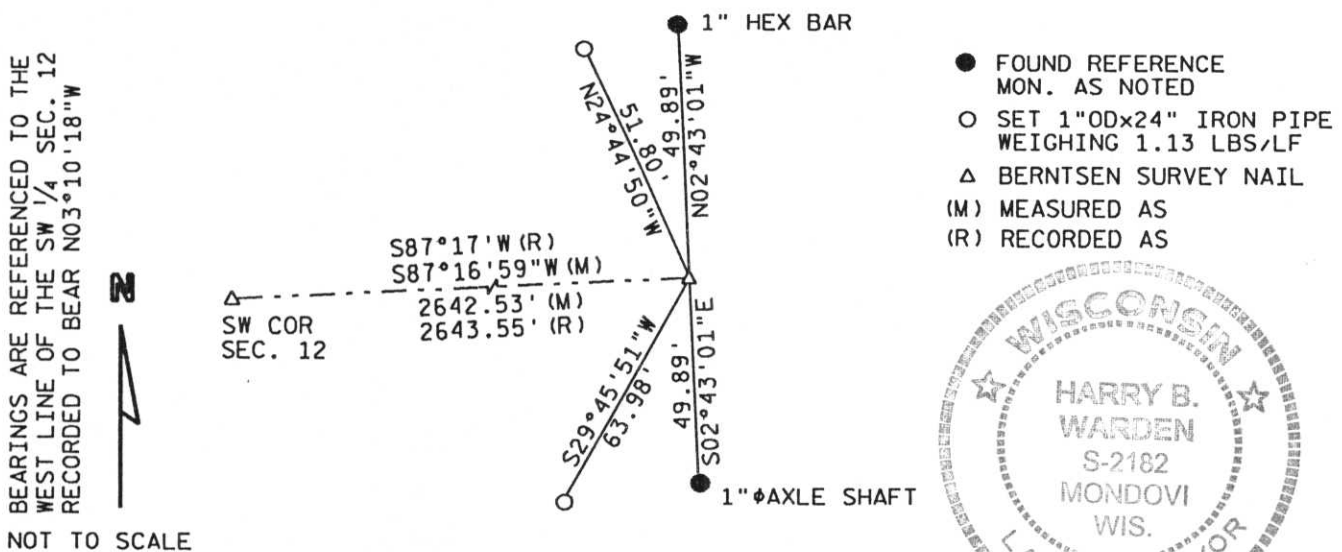


(b) (f) (g) (h) Description of monument found at this corner and if it was accepted, state all evidence (testimonial, occupational, plats, records, other monuments) used as a basis for accepting. If not accepted or nothing was found, state evidence used as a basis for establishing location and what was set. If reestablished through lost corner proportionate methods, indicate all monuments, distances and directions used.

Found reference monuments as recorded in survey of Section 12. No other evidence was found. Set Berntsen Survey Nail on line between reference monuments.

RECEIVED AT LINCOLN COUNTY
COURTHOUSE THIS 19 DAY
OF DEC 1995
Pat Rieker
TAX DESCRIPTION OFFICE

(c) (d) (e) Plan view of corner with ties to a least 4 witness monuments. If in disagreement with previously established corner, show the distances between the two corners and also indicated ties to disputed corner.



(i) I certify that the corner location on this record was determined by me or under my direction and control and that this U.S. Public Land Survey Monument Record is correct and complete to the best my knowledge and belief.

Harry B Warden
Signature

December 13, 1995
Date

INDEX # I-23

Filed for record in Lincoln County Surveyor's Office on _____ Date