

U.S. PUBLIC LAND SURVEY MONUMENT RECORD

NOTE: THIS FORM IS INTENDED AND DESIGNED TO FULFILL ALL REQUIREMENTS OF WISCONSIN ADMINISTRATIVE CODE, CHAPTER A-E 7.08, U.S. PUBLIC LAND SURVEY MONUMENT RECORD (3)(a)(b)(c)(d)(e)(f)(g)(h)(i). ADDITIONAL SHEETS MAY BE NECESSARY TO CONFORM TO SAID REQUIREMENTS.

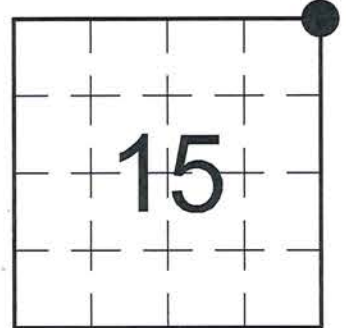
T 33 N, R 7 E

(a) CORNER LOCATION:

NORTHEAST CORNER OF SECTION 15
 TOWNSHIP 33 NORTH
 RANGE 7 EAST
 TOWN OF BIRCH
 LINCOLN COUNTY
 WISCONSIN

(b) HISTORY OF ORIGINAL CORNER:

ORIGINAL SURVEYOR: Jackson L. Prentice; Set post
 COMMENCING DATE: October 14, 1854
 COMPLETION DATE: October 26, 1854
 ORIGINAL BEARING TREES:
 16" Tamarack; S 67° W; 35 links
 24" Pine; S 64-1/2° E; 35 links
 10" Hemlock; N 52° E; 7 links



(f)(g)(h) DESCRIPTION OF MONUMENT FOUND AT THIS CORNER AND IF IT WAS ACCEPTED. STATE ALL EVIDENCE (MATERIAL, TESTIMONIAL, OCCUPATIONAL, PLATS, RECORDS, OTHER MONUMENTS) USED AS A BASIS FOR ESTABLISHING LOCATION. IF RE-ESTABLISHING THROUGH LOST CORNER PROPORTIONATE METHODS, INDICATE ALL MONUMENTS, DISTANCES, AND DIRECTIONS USED TO ESTABLISH. INDICATE TYPE OF MONUMENTS FOUND OR SET.

08/2012 - I, Anthony R. Dallman, PLS-2405, dug with the Lincoln County Gradall at the intersection of County Rd. "J" and Neider Rd. and found no evidence of the corner location. I set a Berntsen Survey Marker Nail at the intersection of the centerline of County Rd. "J" and a line extended from the East Quarter Corner of Section 10 though the centerline of an old bridge on Neider Rd, ±200' north of this corner. I set new reference ties to perpetuate the corner location.

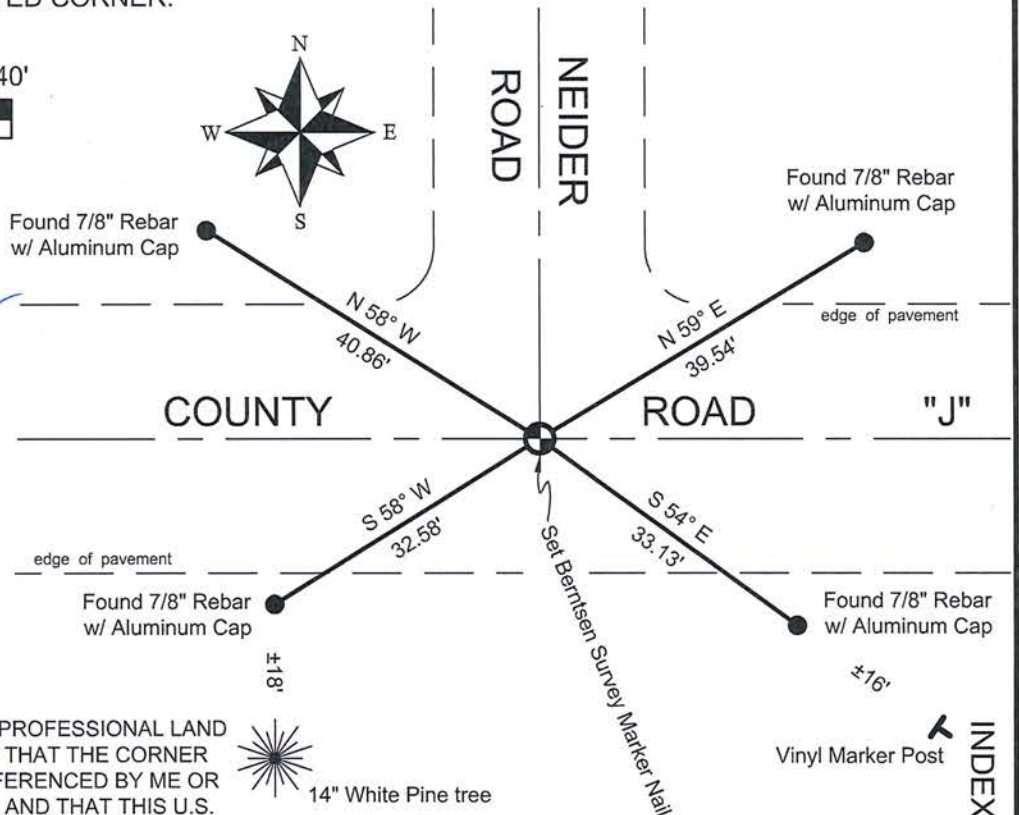
05/20/2015 - I, Anthony R. Dallman, PLS-2405, visited corner prior to road re-surfacing. I found the existing Berntsen Survey Marker Nail and four reference ties intact.

10/21/2015 - I, Anthony R. Dallman, PLS-2405, set a Berntsen Survey Marker Nail at the intersection of existing reference ties as shown in the sketch below.

(c)(d)(e) PLAN VIEW OF THE CORNER WITH TIES TO AT LEAST FOUR WITNESSES. IF IN DISAGREEMENT WITH PREVIOUSLY ESTABLISHED CORNER, SHOW THE DISTANCES BETWEEN THE TWO CORNERS AND ALSO THE TIES TO THE DISPUTED CORNER.



- Tie bearings by hand-held compass.
 - Tie distances by steel tape.



I, ANTHONY R. DALLMAN, WISCONSIN PROFESSIONAL LAND SURVEYOR, S-2405, HEREBY CERTIFY THAT THE CORNER LOCATION ON THIS RECORD WAS REFERENCED BY ME OR UNDER MY DIRECTION AND CONTROL AND THAT THIS U.S. PUBLIC LAND SURVEY MONUMENT RECORD IS COMPLETE TO THE BEST OF MY KNOWLEDGE AND BELIEF.

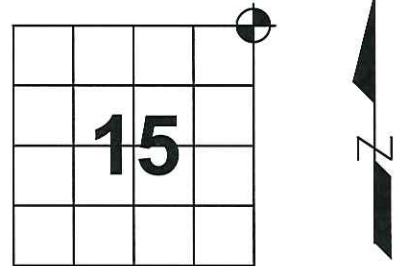
Anthony R. Dallman
 ANTHONY R. DALLMAN, PLS S-2405

INDEX NO. 1-17

U.S. PUBLIC LAND SURVEY MONUMENT RECORD

Note: This form is intended and designed to fulfill all requirements of Wisconsin Administrative Code, Chapter A-E 7.08, U.S. Public Land Survey Monument Record (3) (a) (b) (c) (d) (e) (f) (g) (h) (i). An additional sheet may be added if necessary to conform with said requirements.

(a) Corner location: Township 33 North
 Range 7 East
 Town/~~City/Village~~ Birch
 County Lincoln

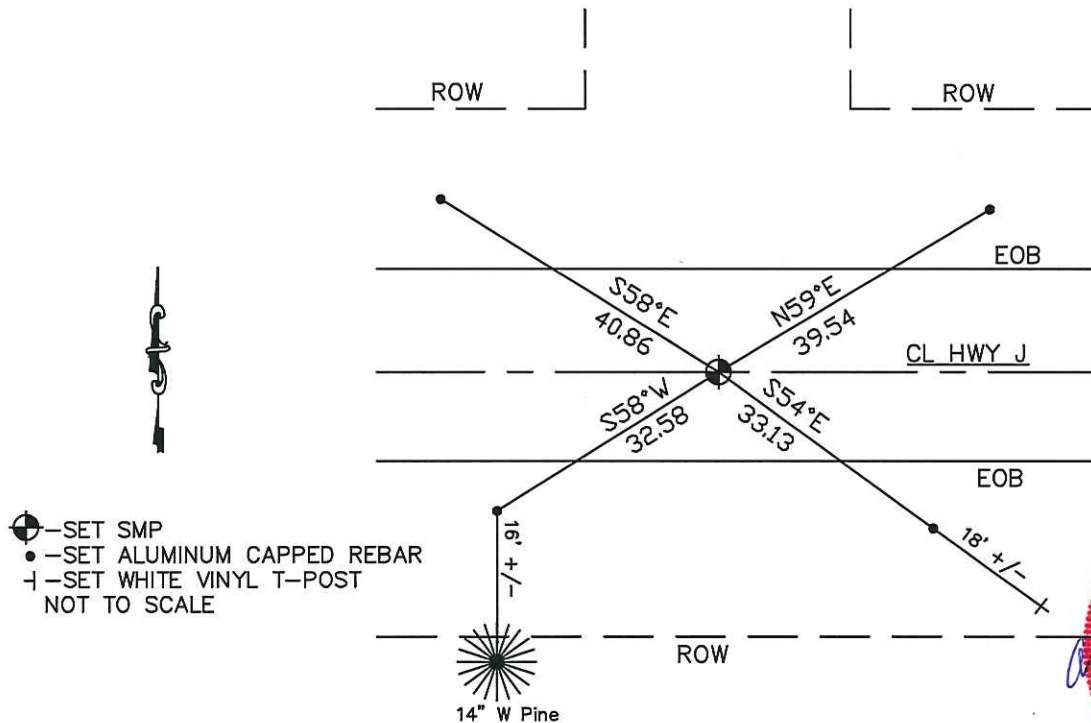


(b) (f) (g) (h) Description of monument found at this corner and if it was accepted, state all evidence (material, testimonial, occupational, plats, records, other monuments) used as basis for accepting. If not accepted or if nothing was found, state evidence used as basis for establishing location. If reestablished through lost corner proportionate methods, indicate all monuments, distances and directions used to establish.

Oct. 1834 - Prentice, Jackson L. Set corner post in marsh.
 Ties: Tamarack 16 S67°W 35 lks
 Pine 24 S64.5°E 35 lks
 Tamarack 10 N52°E lks

Aug. 2012 - Dallman, Anthony R. Set SMP at Intersection of CL hwy J and line ran from the East 1/4 corner of Section 10 through CL of bridge on Neider Rd, after digging with Lincoln County Gradall and finding nothing. Set ties in shoulder of Hwy as shown below:

(c) (d) (e) Plan view of corner with ties to at least 4 witness monuments. If in disagreement with previously established corner, show the distance between the two corners and also indicate the ties to the disputed corner.



Anthony R. Dallman
WISCONSIN
ANTHONY R. DALLMAN
S-2405
MERRILL
WI
LAND SURVEYOR
 11/05/12

(i) I, Anthony R. Dallman

(type or print name) certify that the corner location on this record was determined by me or under my direction and control and that this U.S. Public Land Survey Monument Record is correct and complete to the best of my knowledge and belief.

Anthony R. Dallman
 Signature Date 11/05/12

Index No. I-17