

U.S. PUBLIC LAND SURVEY MONUMENT RECORD

NOTE: THIS FORM IS INTENDED AND DESIGNED TO FULFILL ALL REQUIREMENTS OF WISCONSIN ADMINISTRATIVE CODE, CHAPTER A-E 7.08, U.S. PUBLIC LAND SURVEY MONUMENT RECORD (3)(a)(b)(c)(d)(e)(f)(g)(h)(i). ADDITIONAL SHEETS MAY BE NECESSARY TO CONFORM TO SAID REQUIREMENTS.

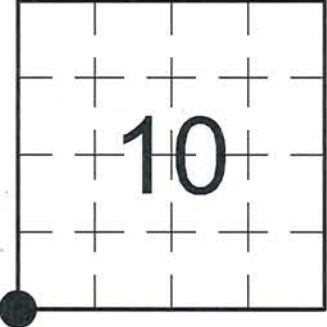
T 33 N, R 7 E

(a) CORNER LOCATION:

SOUTHWEST CORNER, SECTION 10
 TOWNSHIP 33 NORTH
 RANGE 7 EAST
 TOWN OF BIRCH
 LINCOLN COUNTY
 WISCONSIN

(b) HISTORY OF ORIGINAL CORNER:

ORIGINAL SURVEYOR: Jackson L. Prentice; Set post
 COMMENCING DATE: October 14, 1854
 COMPLETION DATE: October 26, 1854
 ORIGINAL BEARING TREES:
 10" Hemlock; S 56° E; 25 links
 Birch (no size); N 25° E; 55 links
 22" Hemlock; S 47° W; 1.00 links
 8" Aspen; N 25° W; 30 links



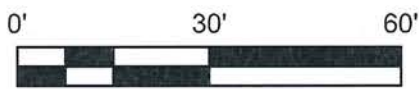
(f)(g)(h) DESCRIPTION OF MONUMENT FOUND AT THIS CORNER AND IF IT WAS ACCEPTED. STATE ALL EVIDENCE (MATERIAL, TESTIMONIAL, OCCUPATIONAL, PLATS, RECORDS, OTHER MONUMENTS) USED AS A BASIS FOR ESTABLISHING LOCATION. IF RE-ESTABLISHING THROUGH LOST CORNER PROPORTIONATE METHODS, INDICATE ALL MONUMENTS, DISTANCES, AND DIRECTIONS USED TO ESTABLISH. INDICATE TYPE OF MONUMENTS FOUND OR SET.

10/26/2001 - D. Goslin, RLS-2280, was not permitted to dig at this location by the Lincoln County Highway Department. He found two (2) 1.5" Iron Bars referenced on WisDOT Project No. 50570(2) and set a Berntsen Survey Marker Nail at a midpoint between said Iron Bars, said position matched stationing and the centerline of County Rd. "J". He set additional reference ties to perpetuate the corner location.

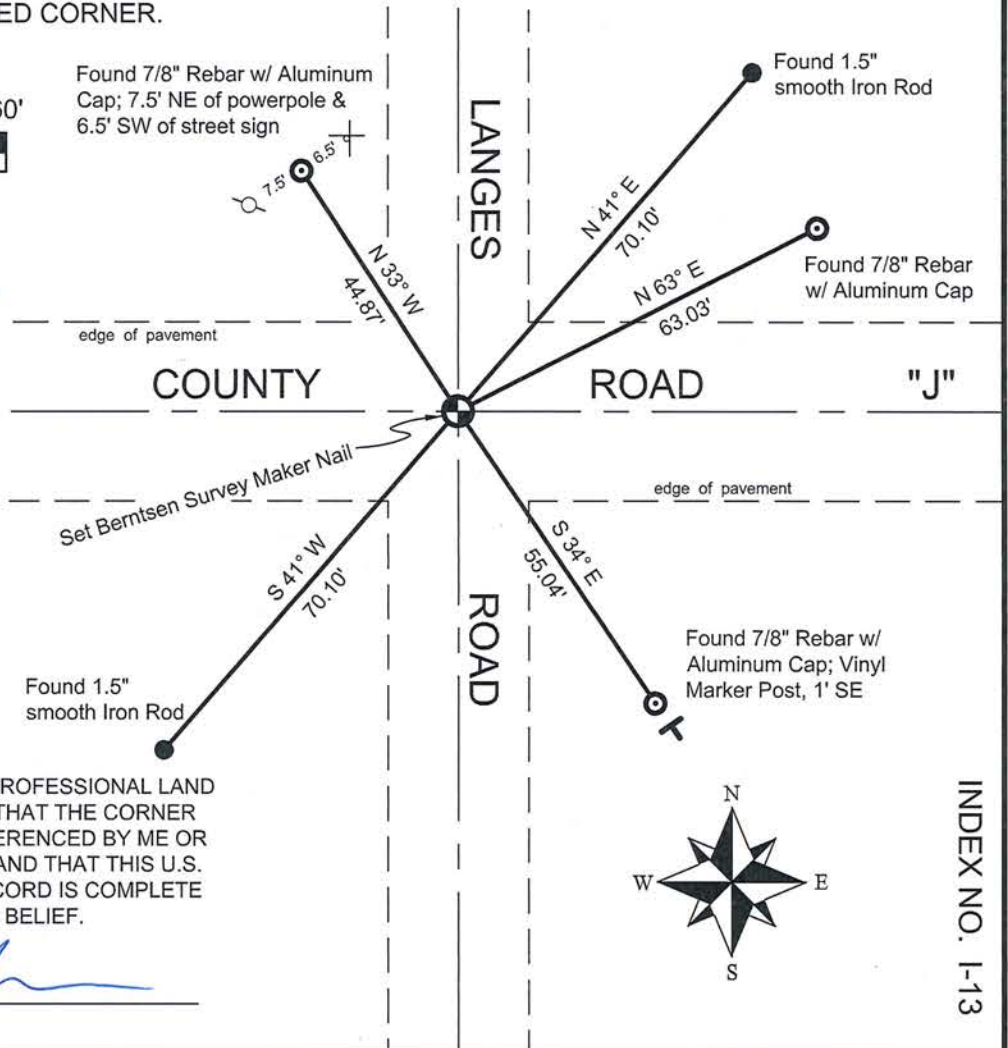
06/01/2015 - I, Anthony R. Dallman, PLS-2405, visited corner prior to road resurfacing. I found the existing Berntsen Survey Marker Nail and reference ties intact, with one tie missing.

10/21/2015 - I, Anthony R. Dallman, PLS-2405, set a Berntsen Survey Marker Nail at the intersection of existing reference ties as shown in the sketch below.

(c)(d)(e) PLAN VIEW OF THE CORNER WITH TIES TO AT LEAST FOUR WITNESSES. IF IN DISAGREEMENT WITH PREVIOUSLY ESTABLISHED CORNER, SHOW THE DISTANCES BETWEEN THE TWO CORNERS AND ALSO THE TIES TO THE DISPUTED CORNER.



- Tie bearings by hand-held compass.
- Tie distances by steel tape.



I, ANTHONY R. DALLMAN, WISCONSIN PROFESSIONAL LAND SURVEYOR, S-2405, HEREBY CERTIFY THAT THE CORNER LOCATION ON THIS RECORD WAS REFERENCED BY ME OR UNDER MY DIRECTION AND CONTROL AND THAT THIS U.S. PUBLIC LAND SURVEY MONUMENT RECORD IS COMPLETE TO THE BEST OF MY KNOWLEDGE AND BELIEF.

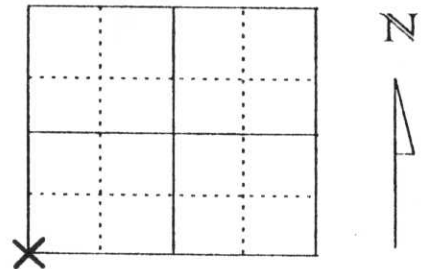
Anthony R. Dallman
 ANTHONY R. DALLMAN, PLS S-2405

INDEX NO. I-13

U.S. PUBLIC LAND SURVEY MONUMENT RECORD

Note: This form is intended and designed to fulfill all requirements of Wisconsin Administrative Code, Chapter A-E 5.02, U.S. Public Land Survey Monument Record (3) (a) (b) (c) (d) (e) (f) (g) (h) (l). An additional sheet may be added if necessary to conform with said requirements.

(a) Corner location: Township 33 North
 Range 7 East
 Town/City/Village BIRCH
 County Lincoln



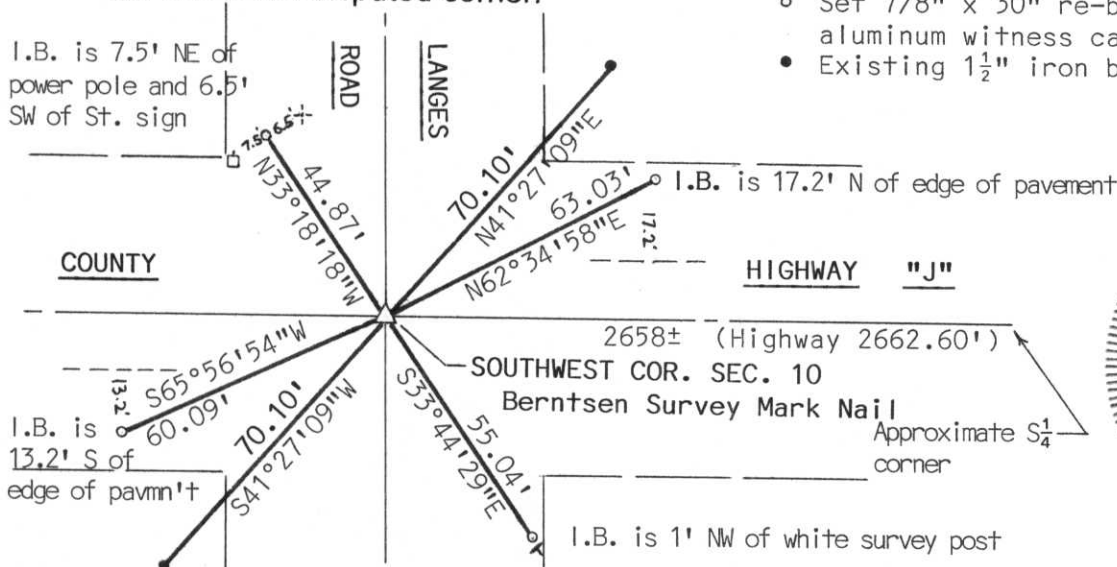
Section 10

(b) (f) (g) (h) Description of monument found at this corner and if it was accepted, state all evidence (material, testimonial, occupational, plats, records, other monuments) used as a basis for accepting. If not accepted or if nothing was found, state evidence used as basis for establishing location. If reestablished through lost corner proportionate methods, indicate all monuments, distances and directions used to establish.

At this location the Lincoln County Highway Department requested that we not dig in County Highway "J". We obtained the highway plans for this area (Project No. 50570(2)) and they showed the corner being located at the centerline intersection of County Highway "J" and Langes Road. We then found two 1 1/2" iron bar reference points in the NE and SW corners of this intersection 140.19 feet apart. We set a Berntsen Survey Mark Nail on a straight line between this iron bars at 70.095' from each iron bar. This location fit the centerline intersection well and checked the highway stationing to the next approximate Section corner location to the East. Accepted this location as the best evidence of the Section corner without being able to dig for more evidence.

RECEIVED AT LINCOLN COUNTY
 COURTHOUSE THIS 8TH DAY
 OF November 20 01
Tony Dalko
 LAND INFORMATION OFFICE

(c) (d) (e) Plan view of corner with ties to at least 4 witness monuments. If in disagreement with previously established corner, show the distances between the two corners and also indicate the ties to the disputed corner.



- Set 7/8" x 30" re-bar with Lincoln County aluminum witness cap
- Existing 1 1/2" iron bar



(i) I, David J. Goslin RLS No. s-2280
 (type or print name) certify that the corner location on this record was determined by me or under my direction and control and that this U.S. Public Land Survey Monument Record is correct and complete to the best of my knowledge and belief.
David J. Goslin
 Signature October 26, 2001
 Date

Index No. I-13