

U.S. PUBLIC LAND SURVEY MONUMENT RECORD

NOTE: THIS FORM IS INTENDED AND DESIGNED TO FULFILL ALL REQUIREMENTS OF WISCONSIN ADMINISTRATIVE CODE, CHAPTER A-E 7.08, U.S. PUBLIC LAND SURVEY MONUMENT RECORD (3)(a)(b)(c)(d)(e)(f)(g)(h)(i). ADDITIONAL SHEETS MAY BE NECESSARY TO CONFORM TO SAID REQUIREMENTS.

T 33 N, R 7 E

(a) CORNER LOCATION:

SOUTH QUARTER CORNER, SECTION 9
 TOWNSHIP 33 NORTH
 RANGE 7 EAST
 TOWN OF BIRCH
 LINCOLN COUNTY
 WISCONSIN

(b) HISTORY OF ORIGINAL CORNER:

ORIGINAL SURVEYOR: Jackson L. Prentice; Set post
 COMMENCING DATE: October 14, 1854
 COMPLETION DATE: October 26, 1854
 ORIGINAL BEARING TREES:
 8" Birch; N 48° W; 14 links
 12" Birch; S 67° E; 13 links



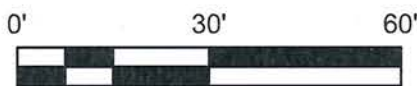
(f)(g)(h) DESCRIPTION OF MONUMENT FOUND AT THIS CORNER AND IF IT WAS ACCEPTED. STATE ALL EVIDENCE (MATERIAL, TESTIMONIAL, OCCUPATIONAL, PLATS, RECORDS, OTHER MONUMENTS) USED AS A BASIS FOR ESTABLISHING LOCATION. IF RE-ESTABLISHING THROUGH LOST CORNER PROPORTIONATE METHODS, INDICATE ALL MONUMENTS, DISTANCES, AND DIRECTIONS USED TO ESTABLISH. INDICATE TYPE OF MONUMENTS FOUND OR SET.

07/2007 - M Hoglund, PLS-1910, dug in County Highway "J" with help from the County Highway Department and found no evidence of the corner location under the road surface. He set a Berntsen Survey Marker Nail in the centerline of County Highway "J" on an extension of an old fence from the south. He set reference ties to perpetuate the corner location.

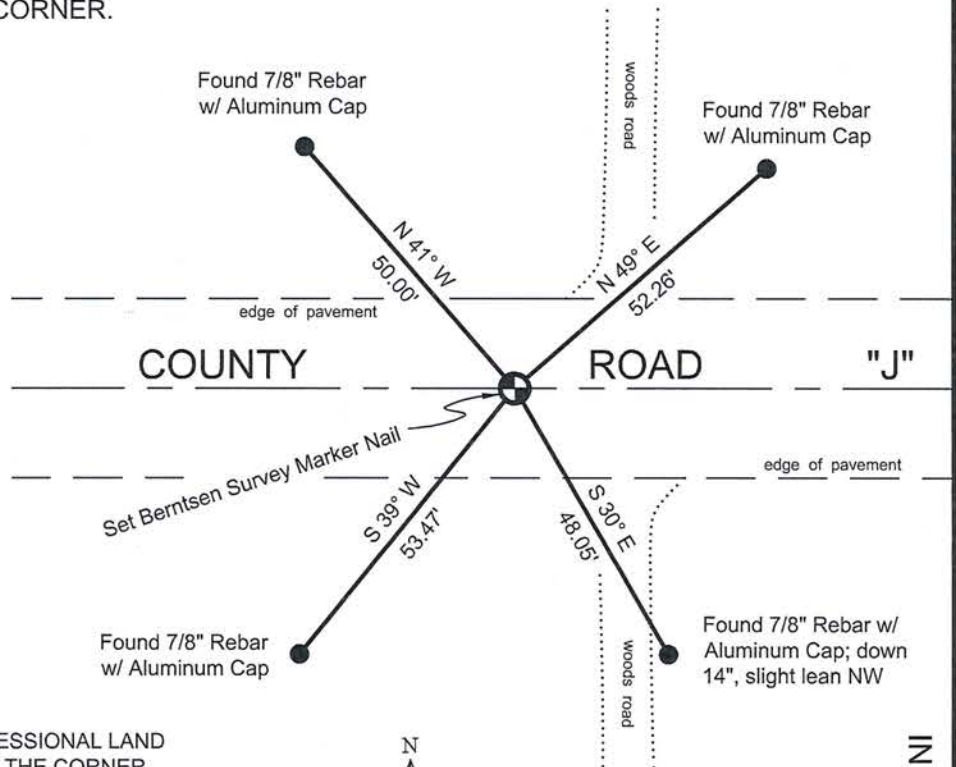
06/01/2015 - I, Anthony R. Dallman, PLS-2405, visited corner prior to road resurfacing. I found the existing Berntsen Survey Marker Nail and reference ties intact.

10/21/2015 - I, Anthony R. Dallman, PLS-2405, set a Berntsen Survey Marker Nail at the intersection of existing reference ties as shown in the sketch below.

(c)(d)(e) PLAN VIEW OF THE CORNER WITH TIES TO AT LEAST FOUR WITNESSES. IF IN DISAGREEMENT WITH PREVIOUSLY ESTABLISHED CORNER, SHOW THE DISTANCES BETWEEN THE TWO CORNERS AND ALSO THE TIES TO THE DISPUTED CORNER.



- Tie bearings by hand-held compass.
- Tie distances by steel tape.



I, ANTHONY R. DALLMAN, WISCONSIN PROFESSIONAL LAND SURVEYOR, S-2405, HEREBY CERTIFY THAT THE CORNER LOCATION ON THIS RECORD WAS REFERENCED BY ME OR UNDER MY DIRECTION AND CONTROL AND THAT THIS U.S. PUBLIC LAND SURVEY MONUMENT RECORD IS COMPLETE TO THE BEST OF MY KNOWLEDGE AND BELIEF.

Anthony R. Dallman
 ANTHONY R. DALLMAN, PLS S-2405

INDEX NO. 1-11

U.S. PUBLIC LAND SURVEY MONUMENT RECORD

NOTE: This form is intended and designed to fulfill all requirements of Wisconsin Administrative Code, Chapter A-E 7 .08 U.S. Public Land Survey Monument Record (3)(a)(b)(c)(d)(e)(f)(g)(h)(i). An additional sheet may be added if necessary to conform with said requirements.

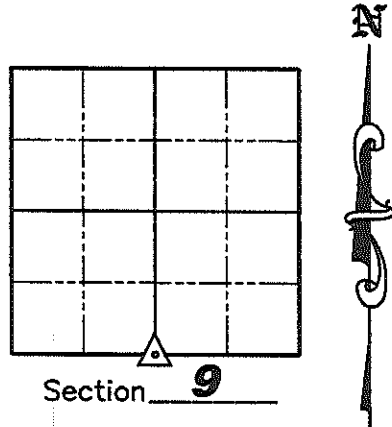
(a) Corner location: Township 33 North
 Range 7 East/West

Town BIRCH

County LINCOLN

Lincoln County Coordinates

N 184996.693
 E 410033.360

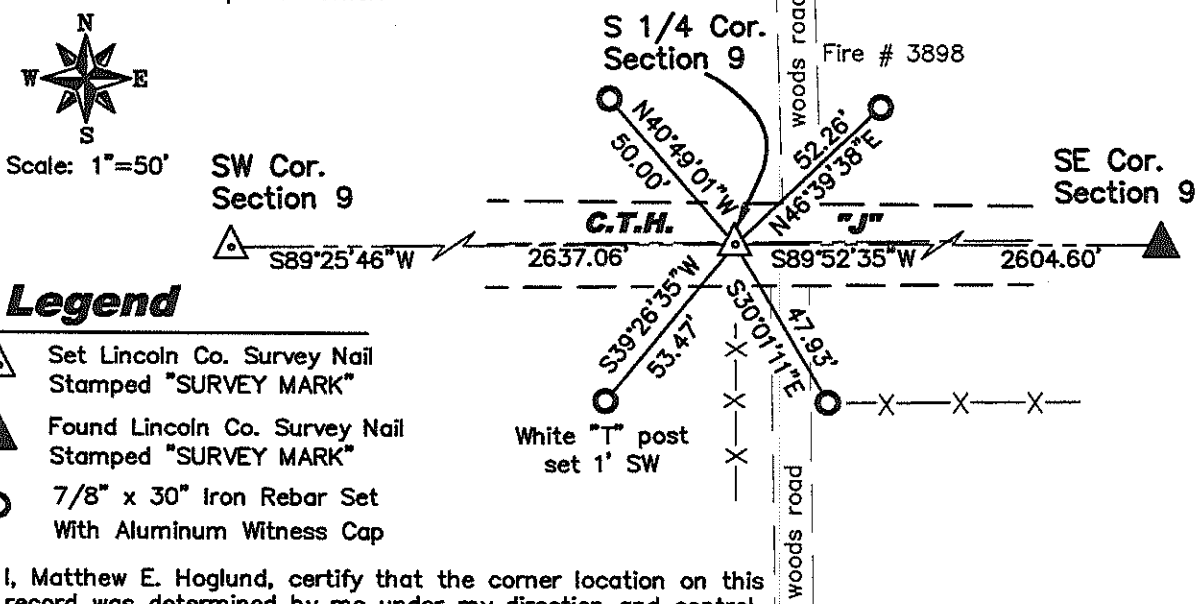


(b)(f)(g)(h) Description of monument found at this corner and if it was accepted, state all evidence (material, testimonial, occupation, plats, records, other monuments) used as a basis for accepting. If not accepted or if nothing was found, state evidence used as a basis for establishing location. If reestablished through lost corner proportionate methods, indicate all monuments, distances and directions used to establish. Indicate type of monument found or set and sign post.

October 1834— Jackson L. Prentice set wooden post for corner: BTs; 8" Birch N48°W, 24 links; 12" Birch S67°E, 13 links.

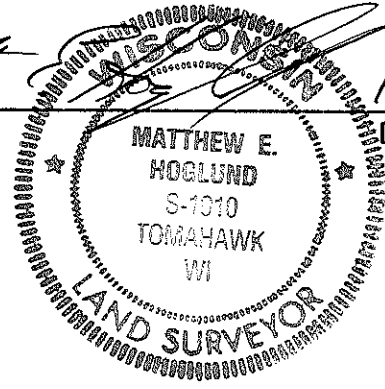
July 2007— Matthew E. Hoglund, S-1910, with the help of the Lincoln County Highway Department we dug for the corner, but found no evidence of the corner under the surface of the road. We set a Lincoln County Survey Nail in the centerline of County Highway "J" on the extension of an old fence line from the South. We set new witness corners as shown below. See Sheet 2 for photographs of evidence found.

(c)(d)(e) Plan view of corner with ties to at least 4 witness monuments. If in disagreement with previously established corner, show the distances between the two corners and also indicate the ties to the disputed corner.



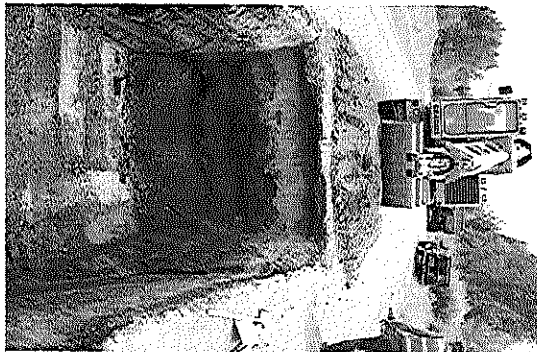
(i) I, Matthew E. Hoglund, certify that the corner location on this record was determined by me under my direction and control and that this U.S. Public Land Survey Monument is correct and complete to the best of my knowledge and belief.

Signature Matthew E. Hoglund Date 10/27/08



RECEIVED BY LINCOLN COUNTY SURVEYOR THIS 28TH DAY OF October 20 08
Tom Dahl
 COUNTY SURVEYOR

U.S. PUBLIC LAND SURVEY MONUMENT RECORD



Dig looking East



Old Fence below grade Grown through center of old Tree to South



Mound of Rocks at rotted off end fence post near South right-of-way



Looking North over Mound of Rocks at rotted off end fence post near South right-of-way



Looking North over Mound of Rocks at rotted off end fence post near South right-of-way toward corner at dig



Old Fence below grade running North from old Tree to South.