

U.S. PUBLIC LAND SURVEY MONUMENT RECORD

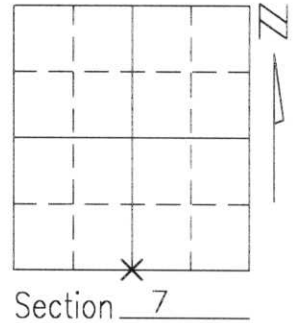
Note: This form is intended and designed to fulfill all requirements of Wisconsin Administrative Code, Chapter A-E 5.02, U.S. Public Land Survey Monument Record (3)(a)(b)(c)(d)(e)(f)(g)(h)(i). An additional sheet may be added if necessary to conform with said requirements.

(a) Corner location: Township 33 North

Range 7 East

Town/City/Village BIRCH

County LINCOLN

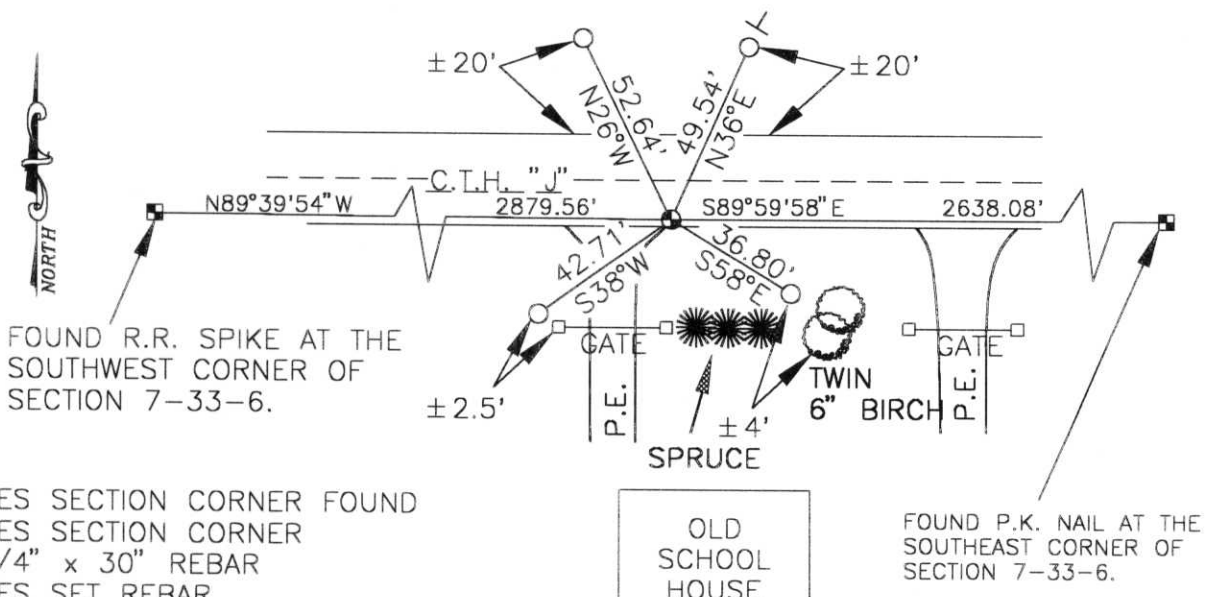


(b)(f)(g)(h) Description of monument found at this corner and if it was accepted, state all evidence (material, testimonial, occupational, plats, records, other monuments) used as a basis for accepting. If not accepted or if nothing was found, state evidence used as basis for establishing location. If reestablished through lost corner proportionate methods, indicate all monuments, distances and directions used to establish.

I searched the general area of the corner as computed with a metal detector and found nothing. To establish the exact location of the corner, I prorated the length of the line between the Southeast and Southwest corners of Section 7 as originally measured and as measured by me to determine the East and West location of the corner, and found monuments from previous surveys along the South side of Section 7 to determine the North and South location of the corner.

**RECEIVED AT LINCOLN COUNTY
COURTHOUSE THIS 17th DAY
OF Dec. 19 97
Pat Priebe
TAX DESCRIPTION OFFICE**

(c)(d)(e) Plan view of corner with ties to at least 4 witness monuments. If in disagreement with previously established corner, show the distances between the two corners and also indicate the ties to the disputed corner.



- - DENOTES SECTION CORNER FOUND
- - DENOTES SECTION CORNER SET 3/4" x 30" REBAR
- - DENOTES SET REBAR W/LINCOLN CO. ALUMINUM CAP
- T - DENOTES SURVEY MARKER POST

(i) I, Thomas A. Radenz R.L.S. No. 2095
(type or print name) certify that the corner location on this record was determined by me or under my direction and control and that this U.S. Public Land Survey Monument Record is correct and complete to the best of my knowledge and belief.



Thomas A. Radenz 12-16-97
Signature Date

Index No. I-3









