

Attachment to Tie Sheet E-19, T33N, R7E

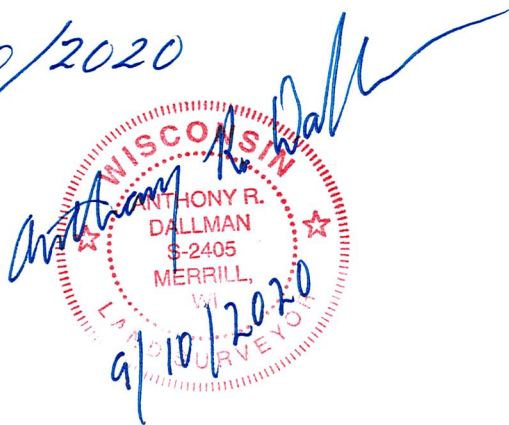
43307020020

I visited the corner on 7/11/2019 to verify the corner and reference tie monumentation. I found the Berntsen Monument and all 4 ties from the Daniel Higginbotham tie sheet (11/25/1997). The established Coordinates and ties agree with existing monument.

Anthony R. Dallman 9/10/2020

Anthony R. Dallman, PLS-2405

Lincoln County Surveyor

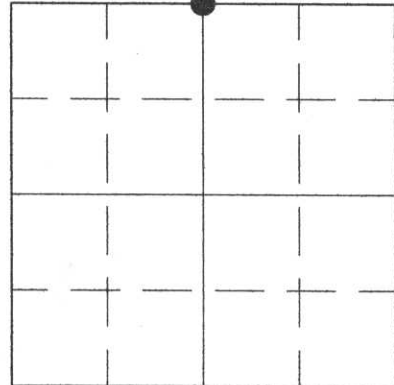


U.S. PUBLIC LAND SURVEY MONUMENT RECORD

HISTORY OF ORIGINAL CORNER ESTABLISHMENT AND SUBSEQUENT RESTORATION AND DESCRIPTION OF ANY RECORD, MONUMENT OCCUPATIONAL, TESTIMONIAL OR OTHER EVIDENCE CONSIDERED:

No monument was found at this corner. We used a straight line single proportion method to set the location of this North 1/4 Corner from a found stone at the Northwest 1/4 and a found iron pipe at the Northeast Corner of Section 11.

● = LOCATION OF CORNER



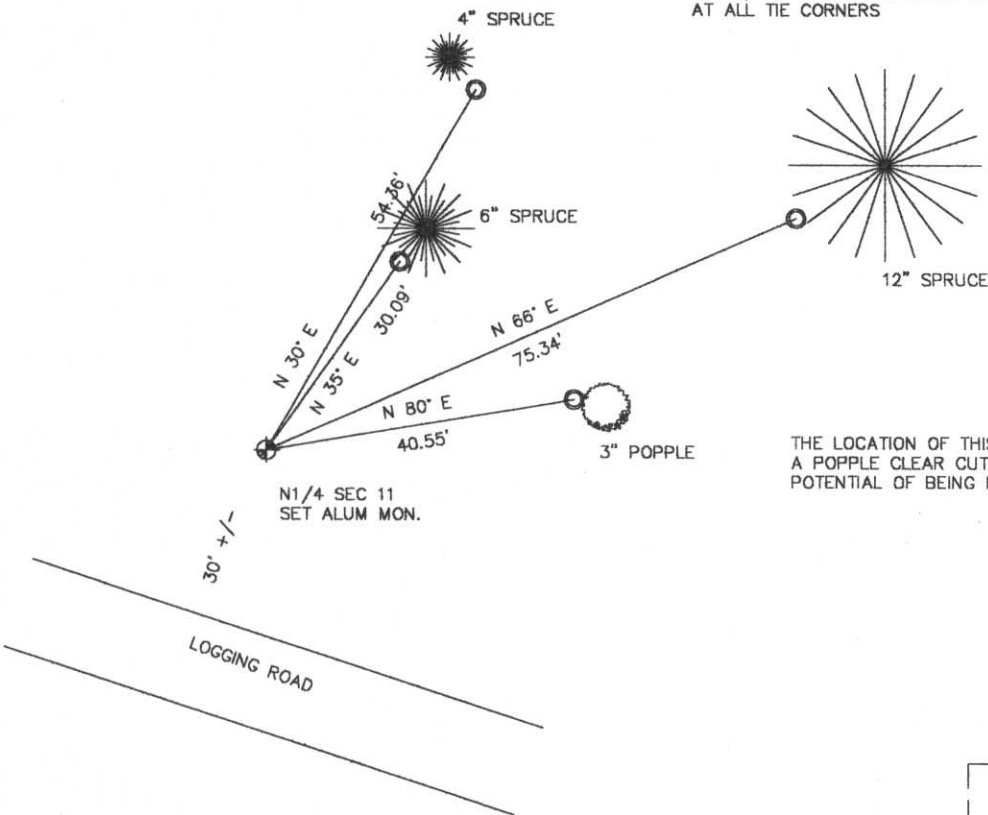
SECTION 11
 TOWNSHIP 33 NORTH, RANGE 7 EAST
 TOWN OF BIRCH
LINCOLN COUNTY, WISCONSIN

CORNER WAS: (CHECK ALL THAT APPLY)

- RESTORED THROUGH ACCEPTANCE OF AN OBLITERATED EVIDENCE LOCATION
- RESTORED THROUGH ACCEPTANCE OF A FOUND PERPETUATED LOCATION
- CONSIDERED A LOST CORNER AND REESTABLISHED THROUGH LOST CORNER PROPORTIONATE METHODS (INCLUDE A PLAN VIEW DRAWING SHOWING DISTANCES AND DIRECTIONS TO OTHER PUBLIC LAND SURVEY CORNERS USED FOR PROPORTIONING AND DETERMINING THE CORNER LOCATION)
- RESTORED OR REESTABLISHED IN A LOCATION THAT DIFFERS FROM A PREVIOUS RESTORATION OR REESTABLISHMENT (INCLUDE A PLAN VIEW DRAWING AND INDICATE WHAT WAS SET AND/OR FOUND)
- CHECK IF THERE IS ADDITIONAL INFORMATION ON BACK

DESCRIBE THE MONUMENT AND ACCESSORIES USED TO PERPETUATE THE LOCATION OF THE CORNER. (INCLUDE A PLAN VIEW DRAWING AND INDICATE WHAT WAS SET AND/OR FOUND) ALSO INCLUDE FOUR TIES TO THE SECTION CORNER AND DESCRIPTION OF THE TIES.

SET 7/8" REBAR WITH ALUM. CAPS AT ALL TIE CORNERS



THE LOCATION OF THIS CORNER FELL IN A POPLLE CLEAR CUT AND HAS GREAT POTENTIAL OF BEING HARD TO FIND

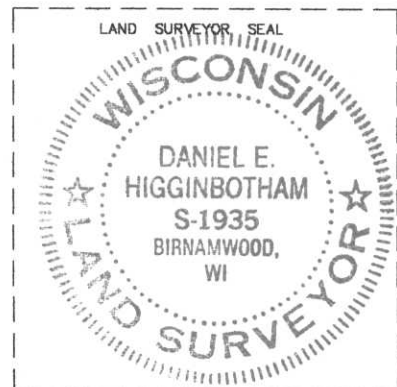
RECEIVED AT LINCOLN COUNTY
 COURTHOUSE THIS 26 DAY
 OF NOV 1997
Pat Quinlan
 TAX DESCRIPTION OFFICE

DANIEL E. HIGGINBOTHAM

(type or print name) CERTIFY THAT THE CORNER LOCATION SHOWN ON THIS RECORD WAS DETERMINED BY ME OR UNDER MY DIRECTION AND CONTROL AND THAT THIS U.S. PUBLIC LAND SURVEY MONUMENT RECORD IS CORRECT AND COMPLETE TO THE BEST OF MY KNOWLEDGE AND BELIEF.

Daniel Higginbotham
 SIGNATURE

11/25/97
 DATE



INDEX NO. E-19