

U.S. PUBLIC LAND SURVEY MONUMENT RECORD

NOTE: This form is intended and designed to fulfill all requirements of Wisconsin Administrative Code, Chapter A-E 7 .08 U.S. Public Land Survey Monument Record (3)(a)(b)(c)(d)(e)(f)(g)(h)(i). An additional sheet may be added if necessary to conform with said requirements.

(a) Corner location: Township 33 North

Range 7 East

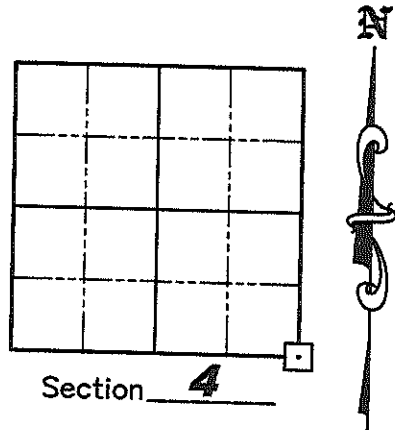
Town BIRCH

County LINCOLN

Lincoln County Coordinates

N 190281.440

E 412612.840



(b)(f)(g)(h) Description of monument found at this corner and if it was accepted, state all evidence (material, testimonial, occupation, plats, records, other monuments) used as a basis for accepting. If not accepted or if nothing was found, state evidence used as a basis for establishing location. If reestablished through last corner proportionate methods, indicate all monuments, distances and directions used to establish. Indicate type of monument found or set and sign post.

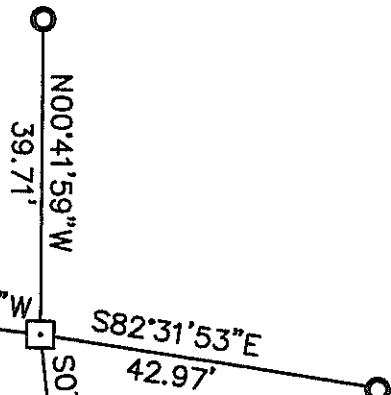
October 1834— Jackson L. Prentice set wooden post for corner: BTs; 14" Aspen N25°E, 19 links; 12" Birch N12°W, 24 links; 11" Birch S42°E, 6 links; 12" Aspen S05°W, 10 links.

August 2007— Matthew E. Hogleund, S-1910, found and accepted a 6" by 6" Granite Monument at the corner location and set new witness corners as shown below.

(c)(d)(e) Plan view of corner with ties to at least 4 witness monuments. If in disagreement with previously established corner, show the distances between the two corners and also indicate the ties to the disputed corner.



8" Maple
60d nail set in base,
tree blazed with BT
sign set in face of
tree



12" Maple
60d nail set in base,
tree blazed with BT
sign set in face of
tree

Legend

□ 6" by 6" Granite Monument Found

○ 7/8" x 30" Iron Rebar Set
With Aluminum Witness Cap

(i) I, Matthew E. Hogleund, certify that the corner location on this record was determined by me under my direction and control and that this U.S. Public Land Survey Monument is correct and complete to the best of my knowledge and belief.

Signature

Date

RECEIVED BY LINCOLN COUNTY
SURVEYOR THIS 28TH DAY
OF October 20 08
Tony Dahl
COUNTY SURVEYOR

Index No. E-13

