

U.S. PUBLIC LAND SURVEY MONUMENT RECORD

NOTE: This form is intended and designed to fulfill all requirements of Wisconsin Administrative Code, Chapter A-E 7 .08 U.S. Public Land Survey Monument Record (3)(a)(b)(c)(d)(e)(f)(g)(h)(i). An additional sheet may be added if necessary to conform with said requirements.

(a) Corner location: Township 33 North

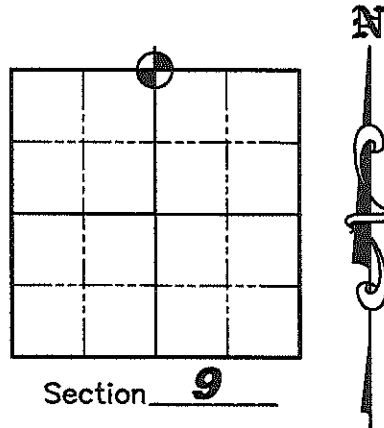
Range 7 East

Town BIRCH

County LINCOLN

Lincoln County Coordinates

N 190272.859
E 409981.537

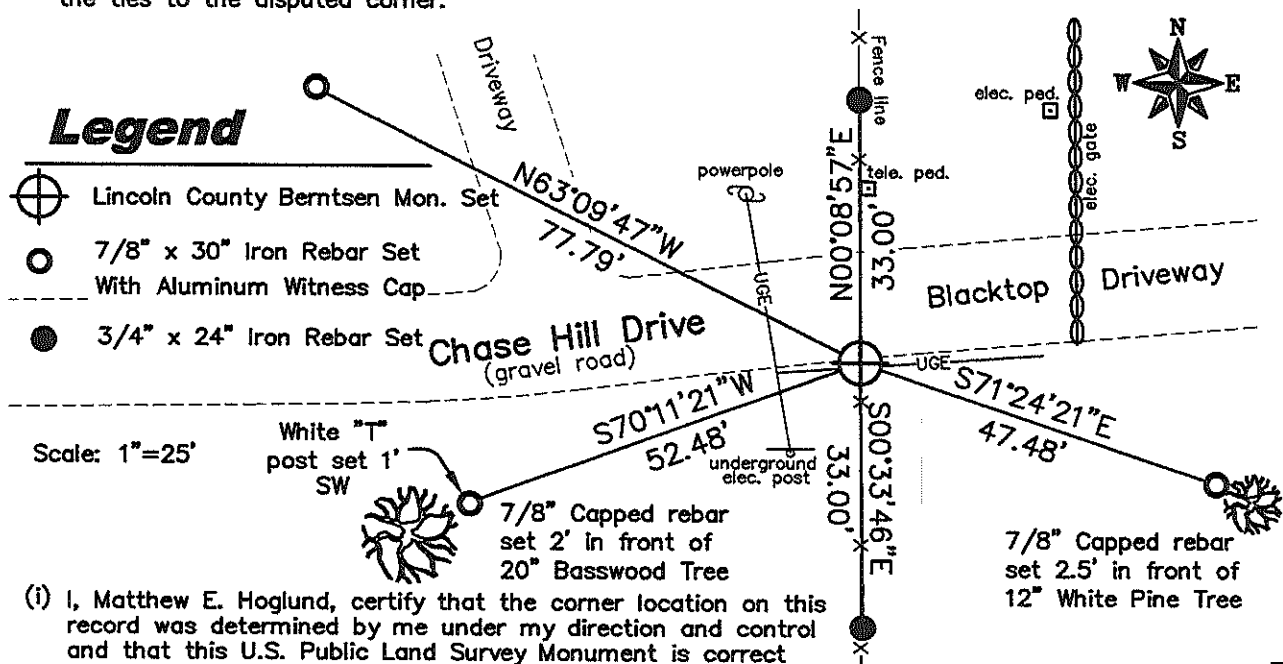


(b)(f)(g)(h) Description of monument found at this corner and if it was accepted, state all evidence (material, testimonial, occupation, plats, records, other monuments) used as a basis for accepting. If not accepted or if nothing was found, state evidence used as a basis for establishing location. If reestablished through lost corner proportionate methods, indicate all monuments, distances and directions used to establish. Indicate type of monument found or set and sign post.

October 1834— Jackson L. Prentice set wooden post for corner: BTs; 11" Birch S03E, 13 links; Maple N25W, 33 links.

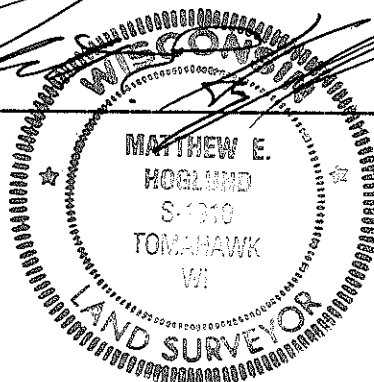
July 2007— Matthew E. Hoglund, S-1910, searched for the corner and found no evidence. We did not dig for this because the corner fell in a cut area and there are existing underground utilities at the corner location which would have destroyed any evidence of the corner. We set a Lincoln County Berntsen Aluminum Monument on an extension of the centerline of Chase Hill Drive from the West with an existing fence line running North-South. (Note: Chase Hill Drive make a turn in the road near the existing driveways shown below, but is straight from the driveways back toward the West.) We set new witness corners as shown below.

(c)(d)(e) Plan view of corner with ties to at least 4 witness monuments. If in disagreement with previously established corner, show the distances between the two corners and also indicate the ties to the disputed corner.



(i) I, Matthew E. Hoglund, certify that the corner location on this record was determined by me under my direction and control and that this U.S. Public Land Survey Monument is correct and complete to the best of my knowledge and belief.

Signature Matthew E. Hoglund Date 10/27/08



RECEIVED BY LINCOLN COUNTY SURVEYOR THIS 28TH DAY OF October 2008
Tom Erath
COUNTY SURVEYOR




Index No. E-11

E-11
C-33

U.S. PUBLIC LAND SURVEY MONUMENT RECORD



Legend

-  Lincoln County Berntsen Monument Found
-  Lincoln County Berntsen Monument Set
-  6" by 6" Granite Stone Found

