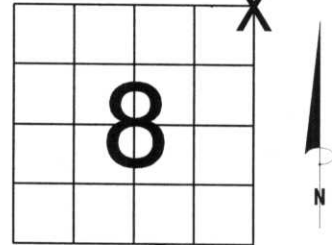


# U.S. PUBLIC LAND SURVEY MONUMENT RECORD

NOTE: THIS FORM IS INTENDED AND DESIGNED TO FULFILL ALL REQUIREMENTS OF WISCONSIN ADMINISTRATIVE CODE, CHAPTER LAND SURVEY MONUMENT RECORD (3) (a) (b) (c) (d) (e) (f) (g) (h) (i). AN ADDITIONAL SHEET MAY BE ADDED IF NECESSARY TO CONFORM WITH SAID REQUIREMENTS. A-E 7.08 U.S. PUBLIC

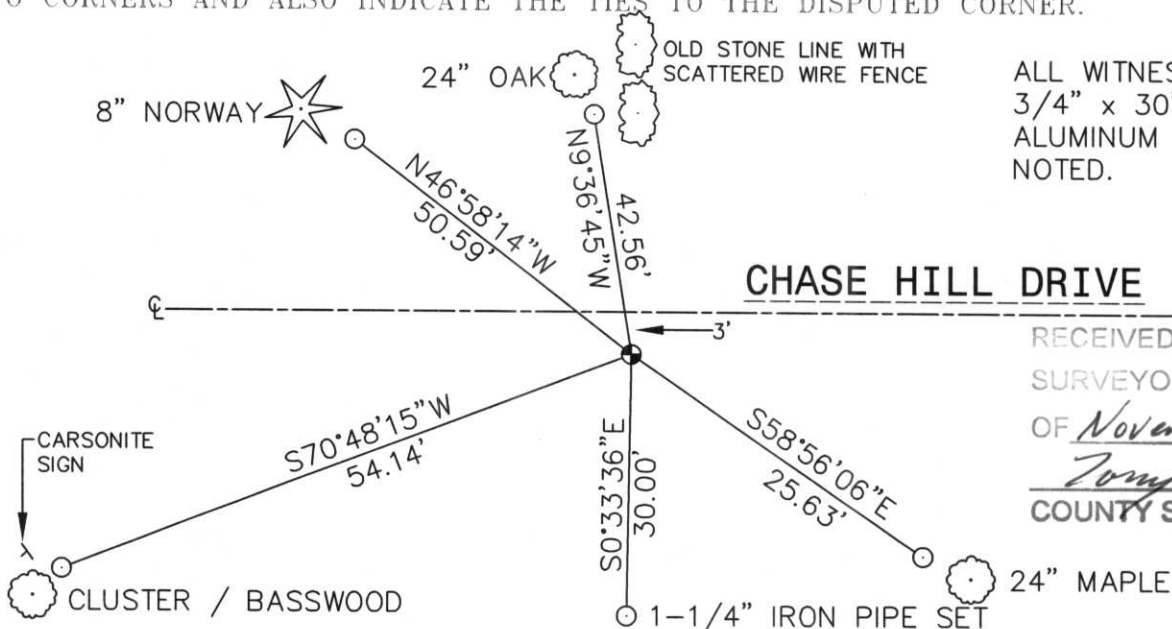
(a) CORNER LOCATION: TOWNSHIP 33 NORTH  
 RANGE 7 EAST/WEST  
 TOWN/~~CITY/VILLAGE~~ BIRCH  
 COUNTY LINCOLN



SECTION 8

(b) (f) (g) (h) DESCRIPTION OF MONUMENT FOUND AT THIS CORNER AND IF IT WAS ACCEPTED, STATE ALL EVIDENCE (MATERIAL, TESTIMONIAL, OCCUPATIONAL, PLATS, RECORDS, OTHER MONUMENTS) USED AS BASIS FOR ACCEPTING. IF NOT ACCEPTED OR IF NOTHING WAS FOUND, STATE EVIDENCE USED AS BASIS FOR ESTABLISHING LOCATION. IF REESTABLISHED THROUGH LOST CORNER PROPORTIONATE METHODS, INDICATE ALL MONUMENTS, DISTANCES AND DIRECTIONS USED TO ESTABLISH. INDICATE TYPE OF MONUMENT FOUND OR SET AND SIGN POST. DUG FOR THIS CORNER ON 11-3-06 WITH THE HELP OF THE LINCOLN COUNTY HIGHWAY DEPARTMENT. AS WE WERE DIGGING, DAVID FOX, TOWN CHAIRMAN STOPPED AND SAID THAT A FORMER OWNER OF ALL THE LAND AROUND THIS SECTION, HAD TOLD HIM THAT THE STONE MONUMENT WAS ON THE NORTH EDGE OF THE ROAD, AND THEN HE SAID, MAYBE IT WAS ON THE SOUTH EDGE. WE DUG UP THE ENTIRE ROADWAY, INCLUDING 4' INTO THE NORTH DITCH. WE WERE UNABLE TO DIG SOUTH OF THE ROAD SURFACE, BECAUSE OF BURIED TELEPHONE CABLE. FOUND NO EVIDENCE FOR CORNER. DON BOQUIST, LOCAL LAND OWNER, SHOWED ME A 6" x 6" x 1.2' STONE MONUMENT, THAT WAS ALONG SIDE OF ONE OF HIS SHEDS, WHEN HE BOUGHT THE PROPERTY. THIS MAY BE THE MONUMENT FOR THIS CORNER. HELD OLD WIRE FENCE, GOING TO THE NORTH, WITH THE AID OF CORNERS TO THE SOUTH, NORTH, WEST AND OLD FENCE LINE 1/2 MILE EAST, SET CORNER AT BEST LOCATION. SET BERNTSEN MONUMENT, 8" BELOW SURFACE. DAVID FOX SAID THAT MORE GRAVEL WOULD BE ADDED TO THE ROAD SURFACE NEXT YEAR.

(c) (d) (e) PLAN VIEW OF CORNER WITH TIES TO AT LEAST 4 WITNESS MONUMENTS. IF IN DISAGREEMENT WITH PREVIOUSLY ESTABLISHED CORNER, SHOW THE DISTANCES BETWEEN THE TWO CORNERS AND ALSO INDICATE THE TIES TO THE DISPUTED CORNER.



ALL WITNESS CORNERS ARE 3/4" x 30" REBAR WITH ALUMINUM CAP UNLESS NOTED.

RECEIVED BY LINCOLN COUNTY SURVEYOR THIS 21<sup>ST</sup> DAY OF November 20 06  
*Tommy Dallen*  
 COUNTY SURVEYOR

(i) I, DAVID L. OSTERBRINK RLS S-2014  
 (TYPE OR PRINT NAME) CERTIFY THAT THE CORNER LOCATION ON THIS RECORD WAS DETERMINED BY ME OR UNDER MY DIRECTION AND CONTROL AND THAT THIS U.S. PUBLIC LAND SURVEY MONUMENT RECORD IS CORRECT AND COMPLETE TO THE BEST OF MY KNOWLEDGE AND BELIEF.

*David L. Osterbrink*  
 SIGNATURE

11-17-06  
 DATE



INDEX NO. \_\_\_\_\_