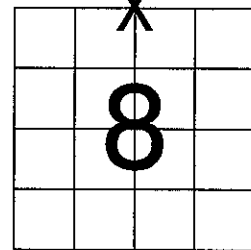


U.S. PUBLIC LAND SURVEY MONUMENT RECORD

NOTE: THIS FORM IS INTENDED AND DESIGNED TO FULFILL ALL REQUIREMENTS OF WISCONSIN ADMINISTRATIVE CODE, CHAPTER A-E 7.08 U.S. PUBLIC LAND SURVEY MONUMENT RECORD (3) (a) (b) (c) (d) (e) (f) (g) (h) (i). AN ADDITIONAL SHEET MAY BE ADDED IF NECESSARY TO CONFORM WITH SAID REQUIREMENTS.

(a) CORNER LOCATION: TOWNSHIP 33 NORTH
 RANGE 7 EAST/WEST
 TOWN/~~CITY/VILLAGE~~ BIRCH
 COUNTY LINCOLN

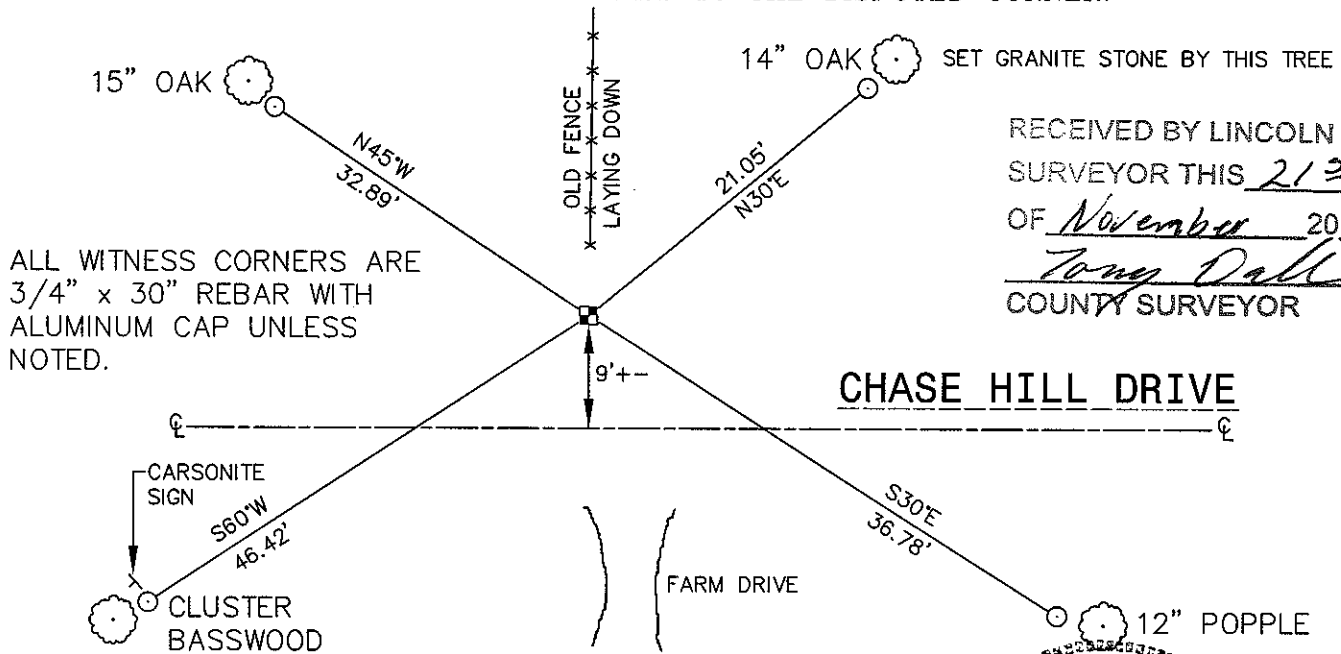


SECTION 8

(b) (f) (g) (h) DESCRIPTION OF MONUMENT FOUND AT THIS CORNER AND IF IT WAS ACCEPTED, STATE ALL EVIDENCE (MATERIAL, TESTIMONIAL, OCCUPATIONAL, PLATS, RECORDS, OTHER MONUMENTS) USED AS BASIS FOR ACCEPTING. IF NOT ACCEPTED OR IF NOTHING WAS FOUND, STATE EVIDENCE USED AS BASIS FOR ESTABLISHING LOCATION. IF REESTABLISHED THROUGH LOST CORNER PROPORTIONATE METHODS, INDICATE ALL MONUMENTS, DISTANCES AND DIRECTIONS USED TO ESTABLISH. INDICATE TYPE OF MONUMENT FOUND OR SET AND SIGN POST.

DAVID FOX, TOWN CHAIRMAN, SAID THAT FESTUS HAD DUG FOR THIS CORNER, BY HAND, HE DID NOT FIND IT. WITH THE AID OF THE LINCOLN COUNTY HIGHWAY DEPARTMENT, WE DUG FOR THIS CORNER ON 11-3-06. WE DUG UP THE ENTIRE ROAD SURFACE AND ON THE NORTH EDGE OF THE ROAD, AT A DEPTH OF 2 FEET, WE FOUND A 6" x 6" x 1.2' GRANITE STONE, LAYING DOWN. WE PULLED 2 TIES FOR THE BOTTOM END OF THE STONE AND CONTINUED DIGGING. FOUND NO OTHER EVIDENCE FOR CORNER. PLACED BERNTSEN MONUMENT, AND BACK FILLED. WHEN WE CAME BACK THE NEXT DAY, WE DUG DOWN TO THE BERNTSEN MONUMENT, AND FOUND IT LEANING SLIGHTLY TO THE NORTH. HELD IN LEANING CONDITION. THERE WAS OLD FENCE WIRE GOING NORTH FROM HERE, ON LINE WITH THE STONE. BEARINGS AND DISTANCE LOOKED GOOD. HELD FOR CORNER. BERNTSEN IS ABOUT 10" DEEP.

(c) (d) (e) PLAN VIEW OF CORNER WITH TIES TO AT LEAST 4 WITNESS MONUMENTS. IF IN DISAGREEMENT WITH PREVIOUSLY ESTABLISHED CORNER, SHOW THE DISTANCES BETWEEN THE TWO CORNERS AND ALSO INDICATE THE TIES TO THE DISPUTED CORNER.



RECEIVED BY LINCOLN COUNTY SURVEYOR THIS 21ST DAY OF November 20 06
Tony Dahl
 COUNTY SURVEYOR

CHASE HILL DRIVE

(i) I, DAVID L. OSTERBRINK RLS S-2014
 (TYPE OR PRINT NAME) CERTIFY THAT THE CORNER LOCATION ON THIS RECORD WAS DETERMINED BY ME OR UNDER MY DIRECTION AND CONTROL AND THAT THIS U.S. PUBLIC LAND SURVEY MONUMENT RECORD IS CORRECT AND COMPLETE TO THE BEST OF MY KNOWLEDGE AND BELIEF.

David L. Osterbrink 11-17-06
 SIGNATURE DATE



INDEX NO. 6-2