

Attachment to Tie Sheet C-21, T33N, R7E

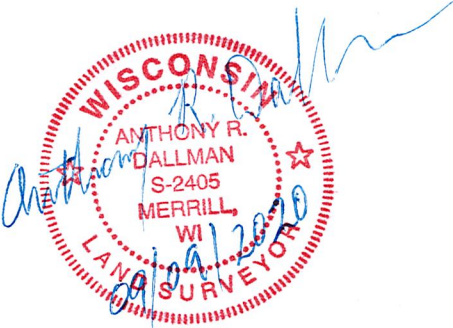
43307022000

I visited the corner on 7/09/2019 to verify the corner and reference tie monumentation. I found the Berntsen Monument and all 4 ties from the Michael Oestreich tie sheet (02/01/2008). The established Coordinates and ties agree with existing monument.

Anthony R. Dallman 09/09/2020

Anthony R. Dallman, PLS-2405

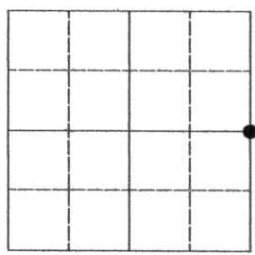
Lincoln County Surveyor



U.S. PUBLIC LAND SURVEY MONUMENT RECORD

Note: This form is intended and designed to fulfill all requirements of the Wisconsin Administrative Code, Chapter A-E 7.08 U.S. Public Land Monument Record (3)(a)(b)(c)(d)(e)(f)(g)(h)(i). An additional sheet may be added if necessary to conform with said requirements.

(a) CORNER LOCATION: COORDINATES
east quarter corner Section 2
Township 33 North
Range 7 East
Town of Birch
County of Lincoln
North:
East:
Control Station:
Latitude:
Longitude:
Datum Method



SECTION 2

(b) HISTORY OF ORIGINAL CORNER ESTABLISHMENT
Original Surveyor: J.L. Prentice
Date of Survey: Commenced October 1854
Completed October 1854
Original B.T.'S
Pine 20" dia., N57°W 15 links
Pine 16" dia., S57°E 57 links

(f)(g)(h) DESCRIPTION OF MONUMENT FOUND AT THIS CORNER AND IF IT WAS ACCEPTED, STATE ALL EVIDENCE (MATERIAL, TESTIMONIAL, OCCUPATIONS, PLATS, RECORDS, OTHER MONUMENTS) USED AS A BASIS FOR ESTABLISHING LOCATION. IF NOT ACCEPTED OF IF NOTHING WAS FOUND, STATE EVIDENCE USED AS BASIS FOR ESTABLISHING LOCATION. IF REESTABLISHED THROUGH LOST CORNER PROPORTIONATE METHODS, INDICATE ALL MONUMENTS, DISTANCES AND DIRECTIONS USED TO ESTABLISH. INDICATE TYPE OF MONUMENT AND SIGN POST FOUND OR SET.

Original surveyor: J.L. Prentice, south corrected at 38.55 chains set quarter section post for sections 1 & 2
Owens-Illinois: June 1954, found granite post lying on road bank. They show a fence to the east, and measurements to section corner to south 40.055 chains and measurement to CW 1/16 corner of Section 1, 19.94 chains.

Michael L. Oestreich: February 2007, found no evidence of granite post mentioned by Owens-Illinois. I set one-quarter at intersection of fence from the east extended to centerline of Grundy Road, and checked the measurements to the section corner to the south: OSM-2645.55' (O & I - 40.055 chains, 2643.63') and CW 1/16 corner of Section 1: OSM-1314.54 (O & I - 19.94 chains, 1316.04') I set a Berntsen aluminum monument on 9/14/07 and made witness ties as shown in the plan below. See Map No. 07-02 by Oestreich Surveying & Mapping, LLC, dated 2/02/07, for complete subdivision of Section 2.

(c)(d)(e) PLAN VIEW OF CORNER WITH TIES TO AT LEAST 4 WITNESS MONUMENTS. IF IN DISAGREEMENT WITH PREVIOUSLY ESTABLISHED CORNER, SHOW THE DISTANCE BETWEEN THE TWO CORNERS AND ALSO INDICATE THE TIES TO THE DISPUTED CORNER.

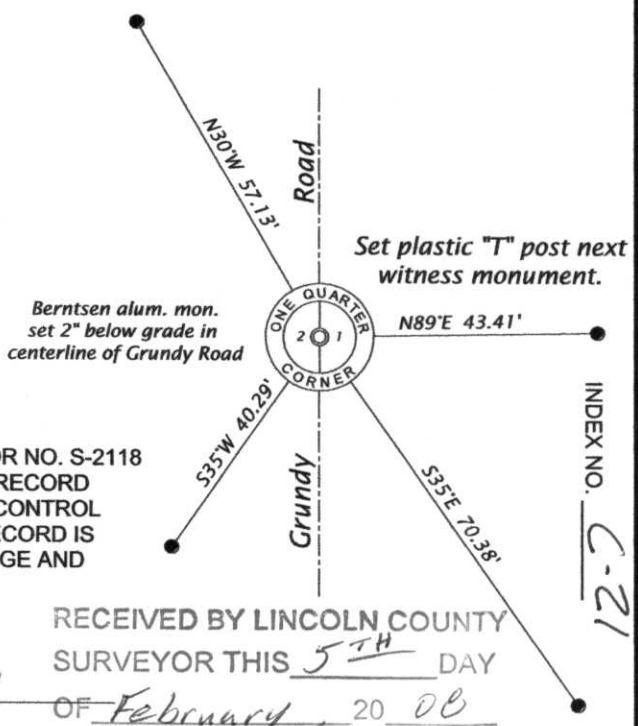


Bearings magnetic



Scale 1"= 30'

● = Set aluminum capped 0.87" dia. x 30" long iron rod.



INDEX NO. C-21

(i) I, MICHAEL L. OESTREICH, REGISTERED LAND SURVEYOR NO. S-2118 HEREBY CERTIFY THAT THE CORNER LOCATION ON THIS RECORD WAS DETERMINED BY ME OR UNDER MY DIRECTION AND CONTROL AND THAT THIS U.S. PUBLIC LAND SURVEY MONUMENT RECORD IS CORRECT AND COMPLETE TO THE BEST OF MY KNOWLEDGE AND BELIEF.

SIGNATURE: [Handwritten Signature] DATE: 2/01/08

RECEIVED BY LINCOLN COUNTY SURVEYOR THIS 5TH DAY OF February 20 08 [Handwritten Signature] COUNTY SURVEYOR