

U.S. PUBLIC LAND SURVEY MONUMENT RECORD

NOTE: This form is intended and designed to fulfill all requirements of Wisconsin Administrative Code, Chapter A-E 7 .08 U.S. Public Land Survey Monument Record (3)(a)(b)(c)(d)(e)(f)(g)(h)(i). An additional sheet may be added if necessary to conform with said requirements.

(a) Corner location: Township 33 North

Range 7 East

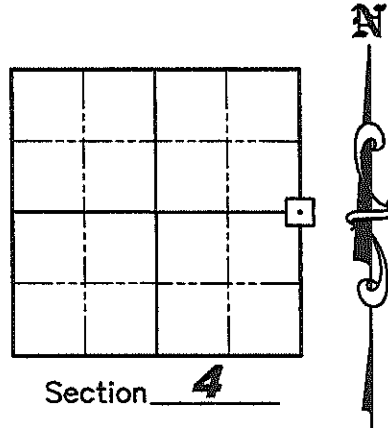
Town BIRCH

County LINCOLN

Lincoln County Coordinates

N 192893.843

E 412619.417



(b)(f)(g)(h) Description of monument found at this corner and if it was accepted, state all evidence (material, testimonial, occupation, plats, records, other monuments) used as a basis for accepting. If not accepted or if nothing was found, state evidence used as a basis for establishing location. If reestablished through lost corner proportionate methods, indicate all monuments, distances and directions used to establish. Indicate type of monument found or set and sign post.

October 1834— Jackson L. Prentice set wooden post for corner: BTs; 8" Pine N74°W, 34 links; 8" Balsam N66°E, 36 links.

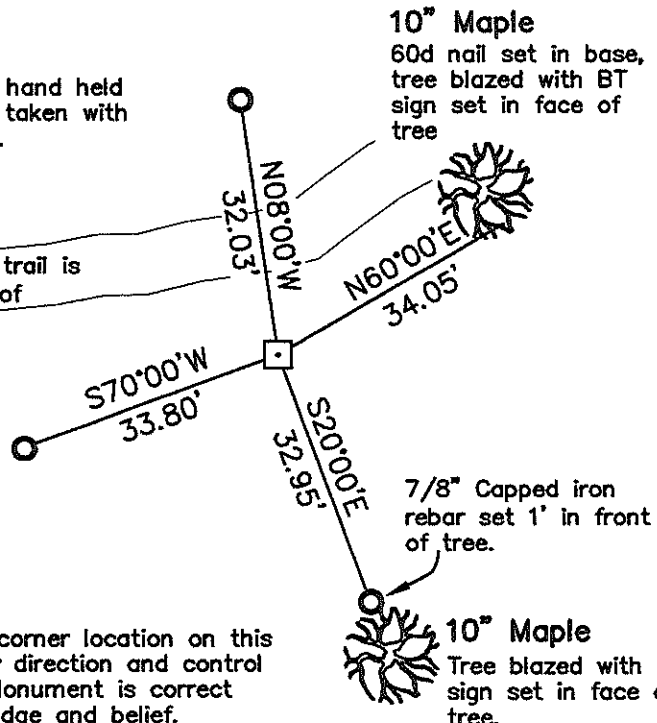
August 2007— Matthew E. Hogleund, S-1910, found and accepted a 6" by 6" Granite Monument at the corner location and set new witness corners as shown below.

(c)(d)(e) Plan view of corner with ties to at least 4 witness monuments. If in disagreement with previously established corner, show the distances between the two corners and also indicate the ties to the disputed corner.



All Bearings taken with hand held compass and distances taken with tape measure.

Old logging trail is 11'± North of Monument.

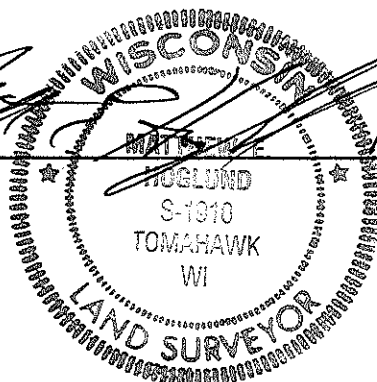


Legend

- 6" by 6" Granite Monument Found
- 7/8" x 30" Iron Rebar Set With Aluminum Witness Cap

(i) I, Matthew E. Hogleund, certify that the corner location on this record was determined by me under my direction and control and that this U.S. Public Land Survey Monument is correct and complete to the best of my knowledge and belief.

Signature



Date 10/27/08

RECEIVED BY LINCOLN COUNTY SURVEYOR THIS 28TH DAY OF October 20 08
Tommy Dalk
 COUNTY SURVEYOR

Index No. C-13