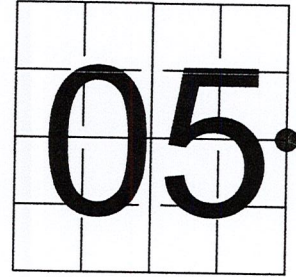


U S PUBLIC LAND SURVEY MONUMENT RECORD

NOTE: This form is intended and designed to fulfill all requirements of Wisconsin Administrative Code, Chapter A-E 7.08 U.S. Public Land Survey Monument Record (3) (a-i)

A-E 7.08(3)(a) Identity of corner:
 EAST 1/4 CORNER SECTION 05,
 TOWNSHIP 33 NORTH,
 RANGE 07 EAST OF THE 4TH PM,
 TOWN OF BIRCH,
 COUNTY OF LINCOLN

WISCRS - LINCOLN COUNTY
 N: 192,871.629 USft (192,871.619)
 E: 407,347.517 USft (407,347.539)
 Datum: NAD83 (2011)
 GNSS Method RTN - Direct
 GNSS Control WISCORS VRS



The coordinate value shown has been verified by the average of two or more GPS observations at a markedly different time. Coordinates shown in parenthesis are provided by Lincoln County.

A-E 7.08(3)(b)

Original Surveyor: Jackson L. Prentice

Date of Original Survey Commenced: October 16, 1854
 Completed: October 26, 1854

Original Accessories:
 Lyn 24 N 44° W 30 links
 Hemlock 10 N 62° E 25 links

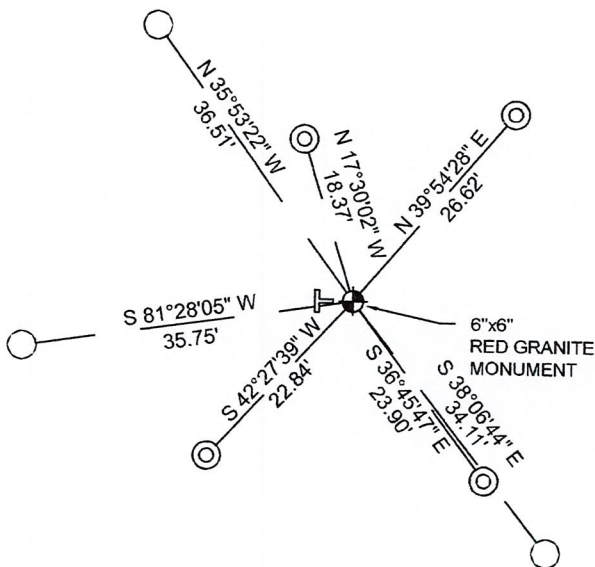
1930's -1940's - Surveyor Francis Fuchs (aka Francis Fox) was known to set granite stone monuments in this area.

November 17, 2006 - Surveyor 2014 - David L. Osterbrink - indicates this position as "existing granite monument " on Section Summary - Section 8 & part of Section 5, Township 33 North, Range 7 East.

August 23, 2007 - Surveyor 1910 - Matthew E. Hogle - indicates this position as "6"x6" granite stone found" on Map L459.

November 30, 2022 - While performing the 2022 Lincoln County PLSS Corner Remonumentation and GPS Services project, I found a 6"x 6" red granite stone near the computed position provided by Lincoln County. Monument extends ±15" above grade and is leaning north. Surveyor was unable to straighten monument and measured to the dimple in the top center of monument. I also found 3 witnesses by others. I established 4 new reference monuments as shown below.

A-E 7.08(3)(c)(d) Plan view of corner with references to at least 4 witness monuments.



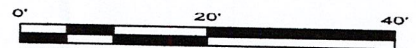
BEARINGS LISTED TO THE NEAREST SECOND ARE REFERENCED TO WISCONSIN COUNTY COORDINATE REFERENCE SYSTEM - LINCOLN COUNTY ZONE. ALL OTHER BEARINGS ARE MAGNETIC



RECEIVED BY LINCOLN COUNTY
 SURVEYOR THIS 27TH DAY
 OF December 20 22
 Jeffrey DeMuth
 COUNTY SURVEYOR

LEGEND

- 6" x 6" red granite monument, found
- 7/8" diameter X 18" long - iron rod with 2" diameter aluminum cap, set
- 7/8" diameter iron rod with 2" diameter aluminum cap, found
- Vinyl T-post, set ±2.4 feet west of corner



A-E 7.08(3)(e) 1854 Surveyor set a post, 1930's - 1940's Surveyor set a granite stone monument, 2006 Surveyor found a granite monument, 2007 Surveyor found a granite stone. I found a 6" x 6" red granite stone.

A-E 7.08(3)(f) I accept this monument as a FOUND PERPETUATED LOCATION of the corner.

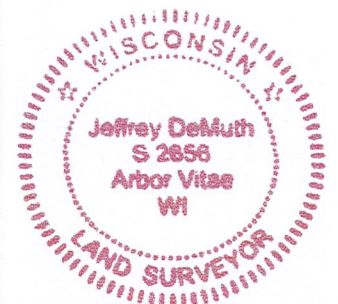
A-E 7.08(3)(g)(h) This corner was not determined through lost-corner-proportionate methods.

A-E 7.08(3)(i) I, Jeffrey L. DeMuth, Professional Land Surveyor No. S-2656, hereby certify that the corner location on this record was determined by the Lincoln County Surveyor, and the monuments found or set as shown hereon were measured by me or under my direction and control, and that this U.S. Public Land Survey Monument Record is correct and complete to the best of my knowledge, and belief.

SIGNATURE

December 14, 2022

DATE



6-7

REPORT

2022-Lincoln County PLSS Corner Remonumentation and GPS Services

Wisconsin Corner Point Identification Number: 43307052000

Surveyor: Jeffrey L. DeMuth – S2656

Corner monument: Found 6" x 6" red granite stone.

Field Book: Cardinal North – Lincoln Co. Remon. – 2022-00

Page: 72

Horizontal Datum: WisCRS – Lincoln County Zone – NAD83(2011)

Date / time of initial measurement:

November 30, 2022 - Start 15:04:14 CST – End 15:15:19 CST

Reference monuments:

4 – Set - 7/8" diameter X 18" long iron rods with 2" diameter Lincoln Co. aluminum cap.

3 – Found - 7/8" with 2" diameter Lincoln Co. aluminum cap.

Coordinate Table

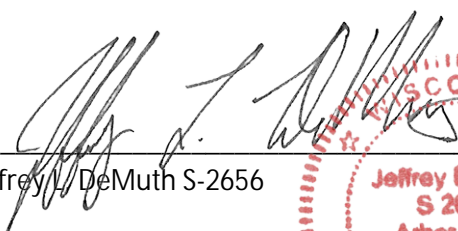
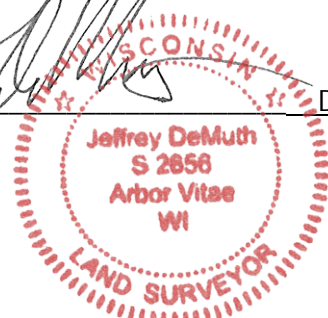
	County Provided	2022 Measurement	Difference
North	192871.619	192871.629	-0.01
East	407347.539	407347.517	0.02

Observed coordinates match with existing coordinates within reason.

Request Data Log for more information.

Additional Notes:

Monument extends ±15" above grade and is leaning north.


 Jeffrey L. DeMuth S-2656
 
 December 01, 2022
 Date

43307052000_Mon-N



43307052000_North



43307052000_West



43307052000_South



43307052000_East

PLEASE
DO NOT
DISTURB
NEARBY
SM
UR
RK
EE
YR

43307052000

