

U.S. PUBLIC LAND SURVEY MONUMENT RECORD

NOTE: This form is intended and designed to fulfill all requirements of Wisconsin Administrative Code, Chapter A-E 7 .08 U.S. Public Land Survey Monument Record (3)(a)(b)(c)(d)(e)(f)(g)(h)(i). An additional sheet may be added if necessary to conform with said requirements.

(a) Corner location: Township 33 North

Range 7 East

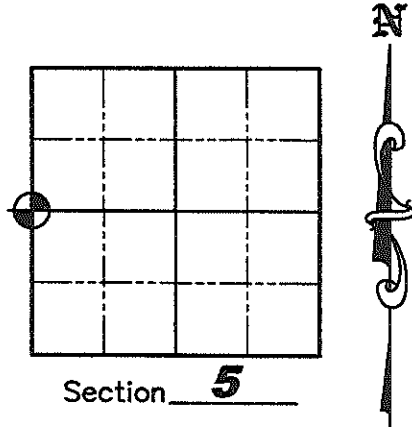
Town BIRCH

County LINCOLN

Lincoln County Coordinates

N 192859.900

E 402079.355



(b)(f)(g)(h) Description of monument found at this corner and if it was accepted, state all evidence (material, testimonial, occupation, plats, records, other monuments) used as a basis for accepting. If not accepted or if nothing was found, state evidence used as a basis for establishing location. If reestablished through lost corner proportionate methods, indicate all monuments, distances and directions used to establish. Indicate type of monument found or set and sign post.

October 1834— Jackson L. Prentice set wooden post for corner: BTs; 10" Elm S71°W, 35 links; 10" Spruce N54°E, 40 links.

December 1972— Working in the adjoining Section 6, Robert H. Winat, S-1040, found no evidence of the original corner or its accessories. He notes that a large culvert extends through the area of the corner and since Lincoln County Highway crews usually witness any evidence found during roadwork done recently (last 25 yrs.±), any evidence is probably gone. Northerly fence falls at original distance from S.E. section corner very closely (2640.0' - 2639.7') and the distance North to the Northeast section corner approximate location is within 5' of the original called for distance. He used existing improvements to set Aluminum Berntsen Monument and witnessed: BT's; 6" Ash S79°W, 48.2'; 12" Elm East, 105.5'; witness; 1" iron pipe N84E, 32.8'.

August 2004— Eugene C. Uttech, S-1451, set a railroad spike at corner location as shown on Certified Survey Map Number 1798, Vol. 9, Pg. 92 of Lincoln County Records.

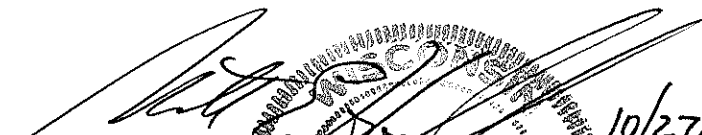
September 2007— Matthew E. Hoglund, S-1910, found and accepted a railroad spike at corner location and witnessed the corner as shown on Sheet 2 hereof.

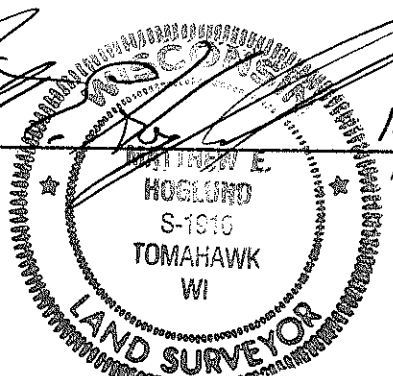
(c)(d)(e) Plan view of corner with ties to at least 4 witness monuments. If in disagreement with previously established corner, show the distances between the two corners and also indicate the ties to the disputed corner.

See Sheet 2 for Detail

RECEIVED BY LINCOLN COUNTY
SURVEYOR THIS 28TH DAY
OF October 20 08
Tom Dull
COUNTY SURVEYOR

(i) I, Matthew E. Hoglund, certify that the corner location on this record was determined by me under my direction and control and that this U.S. Public Land Survey Monument is correct and complete to the best of my knowledge and belief.

Signature  Date 10/27/08



Sheet 1 of 2

Index No. C-5

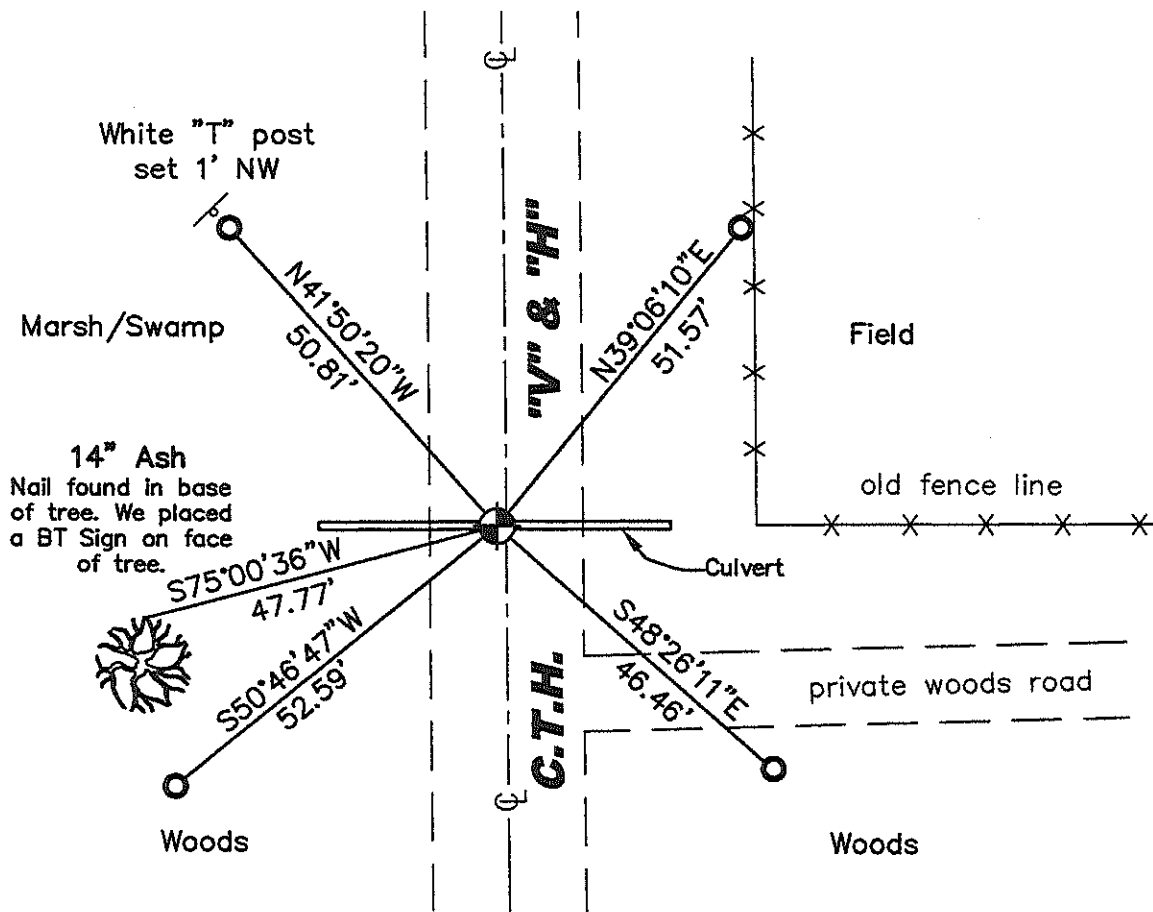
U.S. PUBLIC LAND SURVEY MONUMENT RECORD



Scale: 1"=25'

Legend

- Railroad Spike Found
- 7/8" x 30" Iron Rebar Set
With Aluminum Witness Cap
- White Tee Post Set



C-5
33-7

1/4 Corner G/S T33N, R7E DHD (Line Co.)
Lincoln Co. Wis.

10 Aug. 1972

WINAT

Searched for evidence of corner. Found, if fence is correct, that road construction & culvert installation would have destroyed any monumentation. Therefore, will not dig with GRAD-ALL here.

26 Oct. 1972 45° RC.

KRAMER, KAZDA

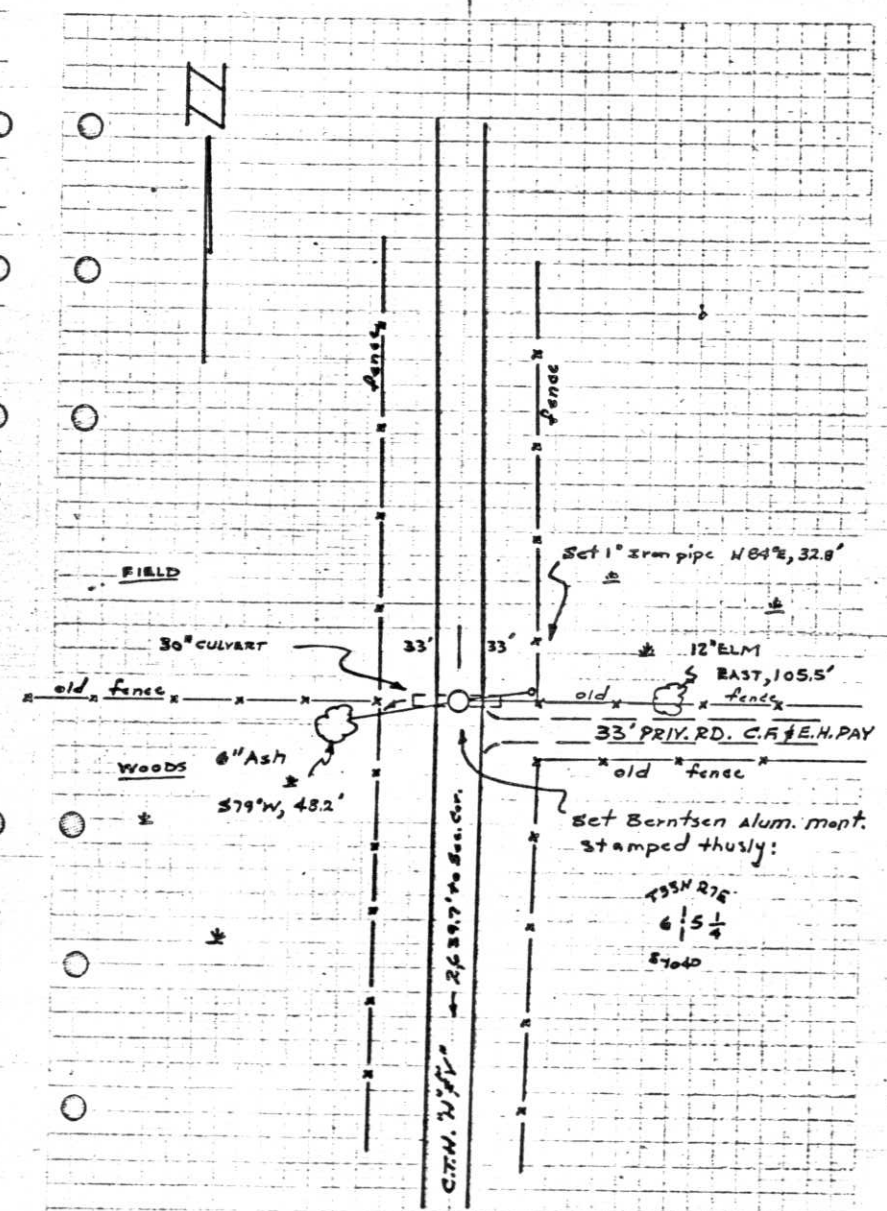
TRAVERSED C.T.H. N⁸⁹W to check location of improvements @ 1/4 cor. G/S from 2615 to 3132.

13 Nov. '72 25° RC.

M^cMullen, Sprister

Distance from G/S to N. fence @ 1/4 cor. G/S is almost standard (26400⁷/₈ 2639.7). Distance from N. fence @ 1/4 cor. G/S to 3132 approximate location is within 5' of original dist. (2640.0 - 2648.7). E ROAD LOCATION establishes 1/4 cor. about 17' E of proportioned location. Therefore, set monument by improvements @ N. fence & tied to traverse making B.T.'s. & witness corner.

144



Robert Winat, Northwoods Surveyor
Copies of work done for Division
of Hwys. Received Feb. 1973

1/4 Corner 6/5 T33N, R7E DHD (Lin. Co.)
Lincoln Co. Wis.

10 Aug. 1972

WIHAT

Searched for evidence of corner. Found, if fence is correct, that road construction & culvert installation would have destroyed any monumentation. Therefore; will not dig with GRAD-ALL here.

26 Oct. 1972 45° P.C.

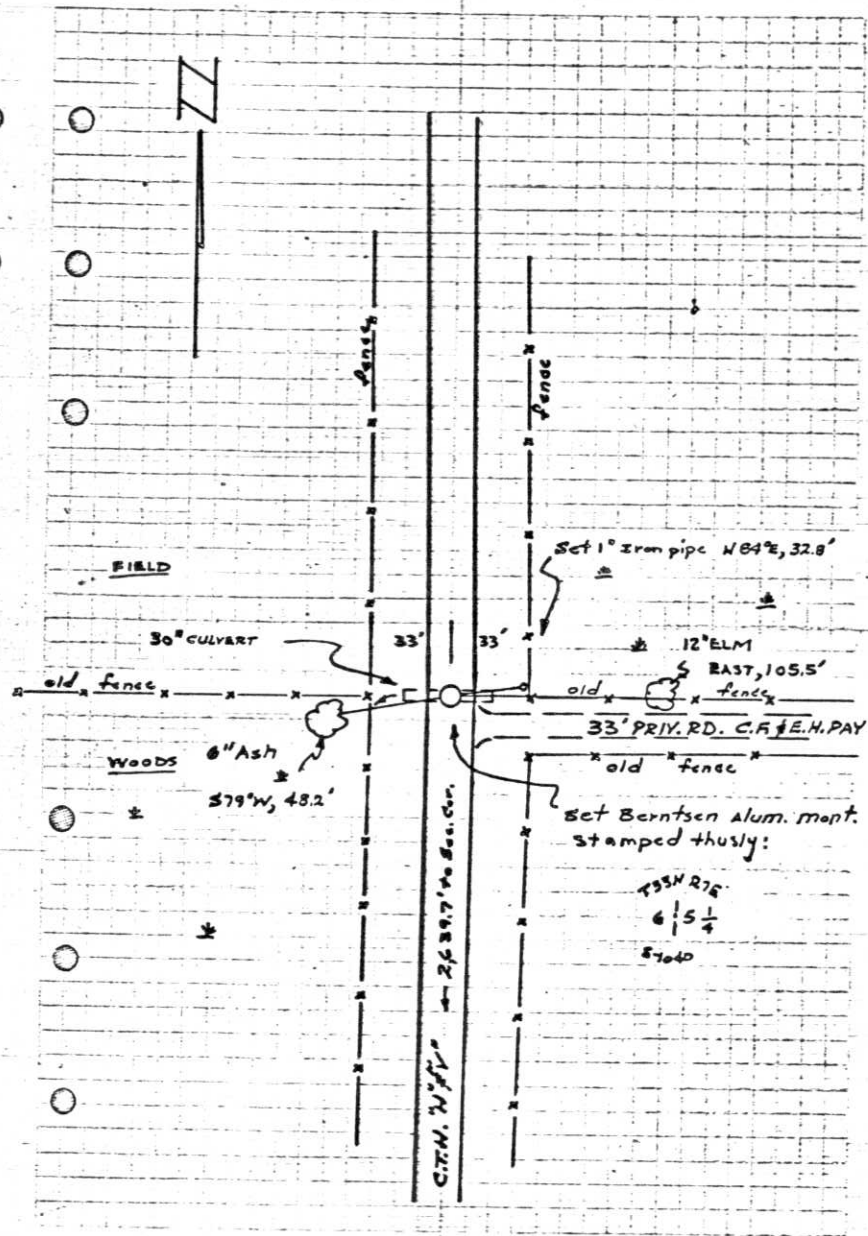
KRAMER, KAZDA

TRAVERSED C.T.H. N⁷²W to check location of improvements @ 1/4 Cor. 6/5 from 6/5 to 3/132.

13 Nov. '72 25° P.C.

McMullen, Sprister

Distance from 6/5 to N. fence @ 1/4 cor. 6/5 is almost standard (2640⁰/₇₁₈ 2639.7'). Distance from N. fence @ 1/4 cor. 6/5 to 3/132 approximate location is within 5' of original dist. (2646.6' - 2648.7'). E ROAD LOCATION establishes 1/4 cor. About 17' E of proportioned location. Therefore; set monument by improvements @ N. fence & tied to traverse making BT's. of witness corner.

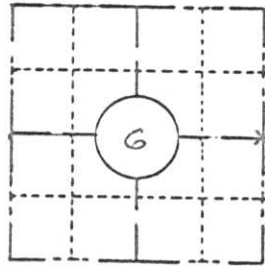


145.

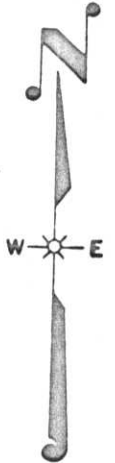
FIELD SURVEY NOTES
PRESERVATION OF LANDMARKS
 (Pursuant to Section 59.635(7) Wisconsin Statutes)

Wisconsin Department of Transportation
 E-D-707-87

COUNTY <i>Lincoln</i>		
TOWN <i>Birch</i>		
HIGHWAY <i>U.S.H. 51 FREEWAY</i>		
SECTION <i>6</i>	TOWNSHIP <i>T33 N</i>	RANGE <i>R7E</i>
TYPE OF LANDMARK <i>EAST 1/4 CORNER</i>		



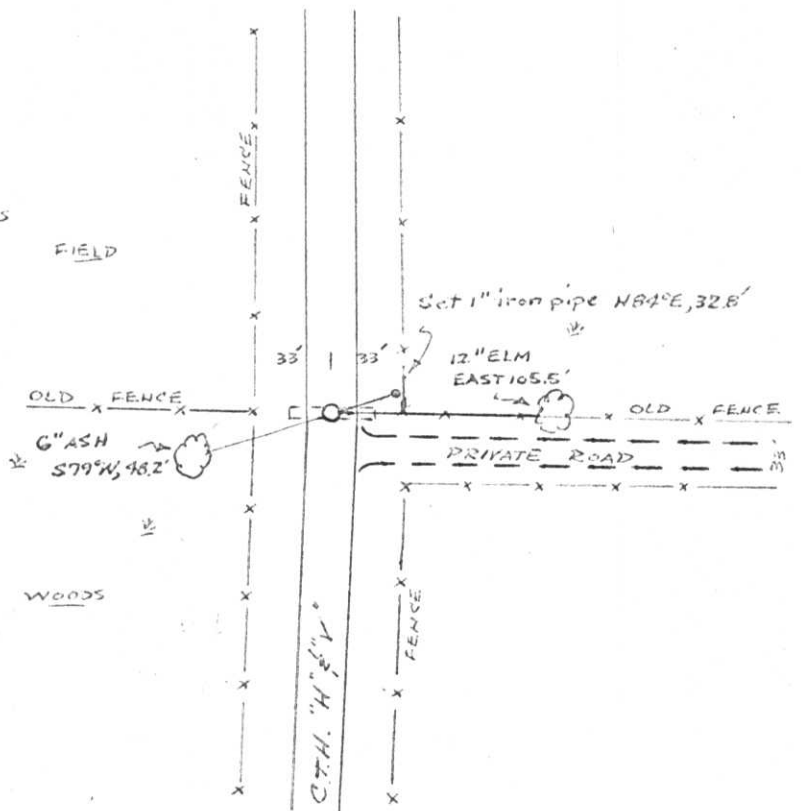
LOCATION SKETCH
 (Location of landmark indicated by "x")



This space for copy of field notes or ties to the above described landmarks

No evidence was found of the original corner or accessories as set by Jackson Prentice in Oct. 1854. A large culvert extends through the area of the corner and since Lincoln County highway crews usually witness any evidence found during roadwork done recently (last 25 yrs.), any evidence is probably gone. Northerly fence falls at original distance from S.E. Sec. Corner very closely (2640.0 - 2639.7') and the distance north to the N.E. Sec. Corner approximate location is within 5' of the original called for distance.

Used existing improvements to locate corner. Set Perntsen Aluminum monument & witness corner and made Bearing Trees.



FILED UNDER PROJECT <i>U.S.H. 51 FREEWAY</i>		
NUMBER <i>I.D. 1173-0-02</i>		
SHC DISTRICT OFFICE NUMBER <i>7</i>	CITY	COUNTY <i>Lincoln</i>
LOCATED OR ESTABLISHED BY <i>NORTH WOODS SURVEYORS, INC.</i>		
NAME <i>Robert H. Hinkel</i>		
TITLE <i>Land Surveyor S-1070</i> DATE <i>Dec. 1972</i>		

COUNTY CLERK'S OFFICE	
COUNTY OF <i>Lincoln</i>	WISCONSIN } SS
DATE RECEIVED FOR RECORD <i>1/26/73</i>	DATE COPY SENT TO COUNTY SURVEYOR <i>[initials]</i>
SIGNATURE OF COUNTY CLERK <i>Ken Oldenburg</i>	

C-5

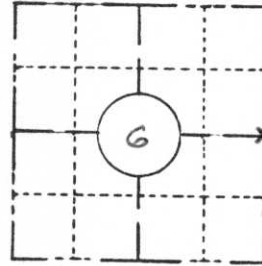
FIELD SURVEY NOTES

PRESERVATION OF LANDMARKS

(Pursuant to Section 59.635(7) Wisconsin Statutes

Wisconsin Department of Transportation
E-D-707-87

COUNTY <i>Lincoln</i>		
TOWN <i>Birch</i>		
HIGHWAY <i>U.S.H. 51 FREEWAY</i>		
SECTION <i>6</i>	TOWNSHIP <i>T33 N</i>	RANGE <i>R7E</i>
TYPE OF LANDMARK <i>EAST 1/4 CORNER</i>		



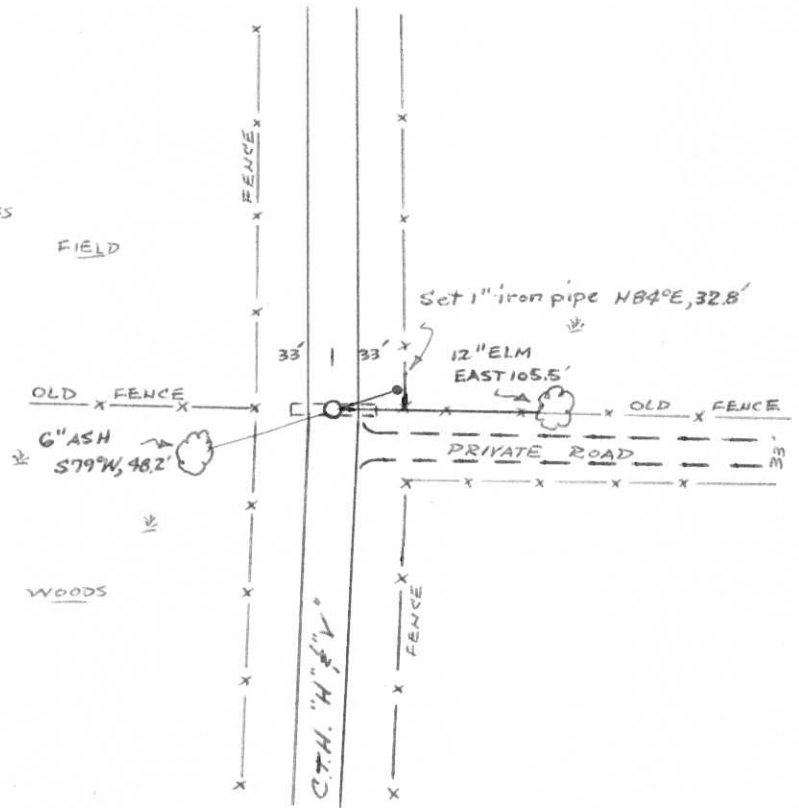
LOCATION SKETCH
(Location of landmark indicated by "x")



This space for copy of field notes or ties to the above described landmarks

No evidence was found of the original corner or accessories as set by Jackson Prentice in Oct. 1854. A large culvert extends through the area of the corner and since Lincoln County highway crews usually witness any evidence found during roadwork done recently (last 25 yrs.±), any evidence is probably gone. Northerly fence falls at original distance from S.E. Sec. Corner very closely (2640.0 - 2639.7') and the distance North to the N.E. Sec. Corner approximate location is within 5' of the original called for distance.

Used existing improvements to locate corner. Set Berntsen Aluminum monument & witness corner and made Bearing Trees.



FILED UNDER PROJECT <i>USH 51 FREEWAY</i>	
NUMBER <i>I.D. 1173-0-02</i>	
SHC DISTRICT OFFICE NUMBER <i>7</i>	CITY <i>Lincoln</i>
COUNTY <i>Lincoln</i>	
LOCATED OR ESTABLISHED BY <i>NORTHWOODS SURVEYORS, INC.</i>	
NAME <i>Robert H. Hines</i>	
TITLE <i>Land Surveyor S-1040</i> DATE <i>Dec. 1972</i>	

COUNTY CLERK'S OFFICE	
COUNTY OF <i>Lincoln</i> WISCONSIN } SS	
DATE RECEIVED FOR RECORD <i>1/26/73</i>	DATE COPY SENT TO COUNTY SURVEYOR <i>✓</i>
SIGNATURE OF COUNTY CLERK <i>Ken Oldenburg</i>	

C-5