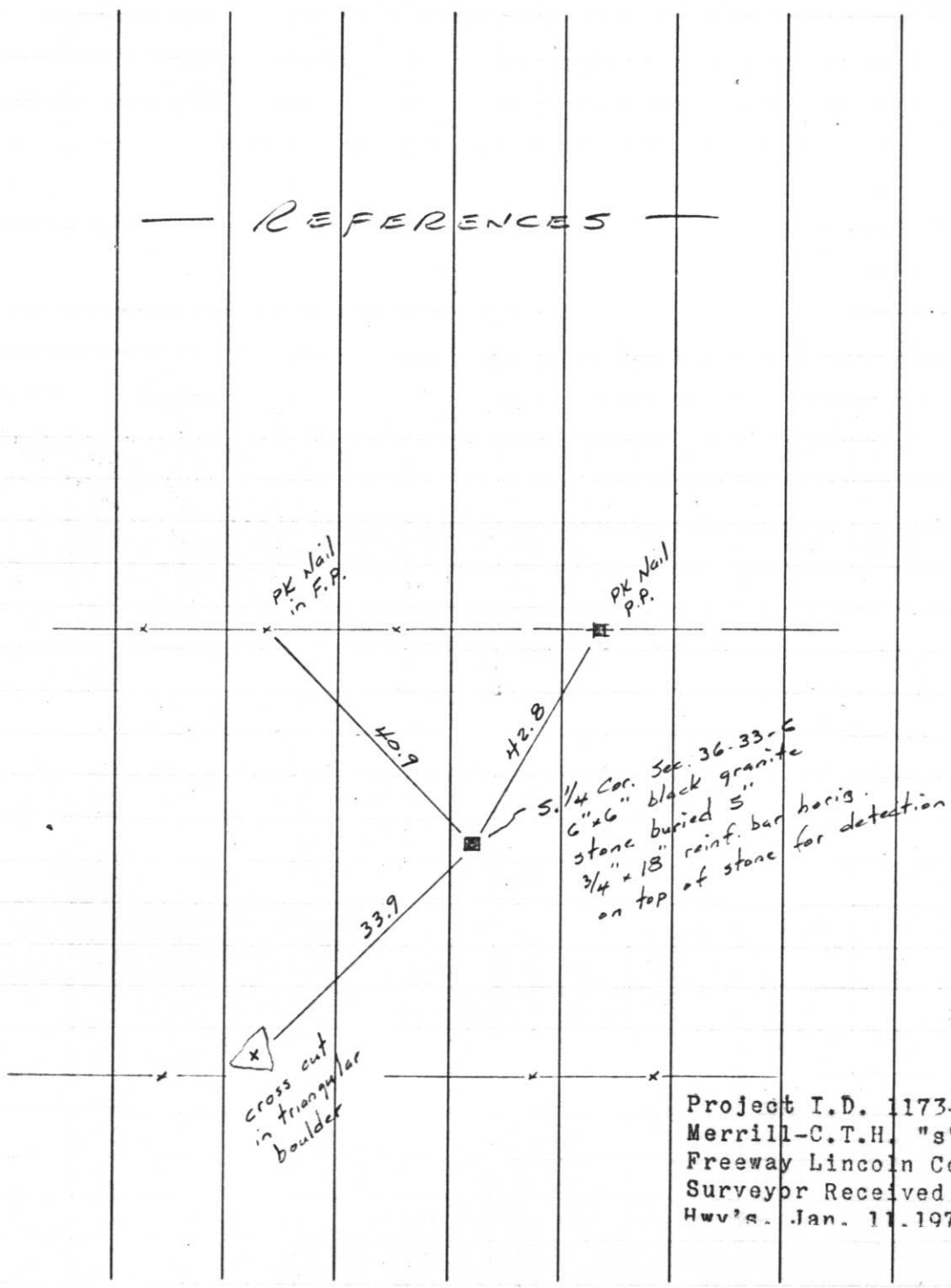




77.



REFERENCES

cross cut in triangular boulder

S. 1/4 Cor. Sec. 36-33-6  
6" x 6" black granite  
stone buried 5"  
3/4" x 18" reinf. bar horis.  
on top of stone for detection

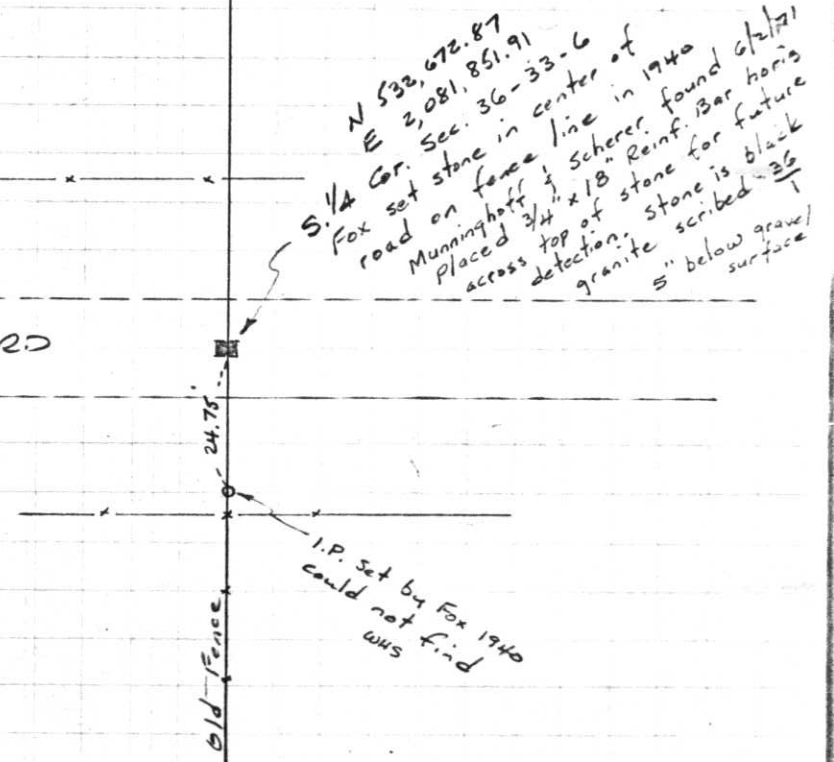
Project I.D. 1173-5-00 1.4 Mi.N.  
Merrill-C.T.H. "s" U.S.H. 51  
Freeway Lincoln County Wm. Scherer  
Surveyor Received from Division of  
Hwy's. Jan. 11. 1973

T33N R6E

June 2, 1971



OLIVOTTI RD  
Gravel



N 532, 672.87  
E 2, 081, 851.91  
S. 1/4 Cor. Sec. 36-33-6  
Fox set stone in center of  
road on fence line in 1940  
Manninghoff & Scherer found 6 1/2"  
Placed 3/4" x 18" Reinf. Bar horis  
top of stone for future  
detection. Stone is black  
granite scribed 36  
5" below gravel  
surface

I.P. set by Fox 1940  
could not find  
was