

Attachment to Tie Sheet Y-21, T33N, R6E

43306350000

I visited the corner on 4/25/2019 to verify the corner and reference tie monumentation before County Road work. I found the Berntsen Monument and all 4 ties from the LaVerne Mosher tie sheet (8/02/1991) and verified by David Lemke (5/30/1997). The established Coordinates and ties agree with existing monument.

Anthony R. Dallman 8/20/19

Anthony R. Dallman, PLS-2405

Lincoln County Surveyor



U.S. PUBLIC LAND SURVEY MONUMENT RECORD

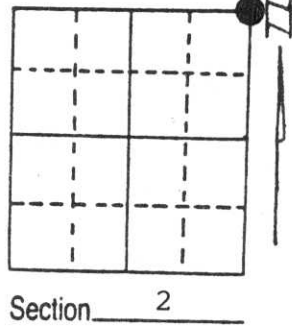
Note: This form is intended and designed to fulfill all requirements of Wisconsin Administrative Code, Chapter A-E 5.02, U.S. Public Land Survey Monument Record (3) (a) (b) (c) (d) (e) (f) (g) (h) (i). An additional sheet may be added if necessary to conform with said requirements.

(a) Corner location: Township 32 North

Range 6 East

Town/City/Village TN. OF MERRILL

County LINCOLN



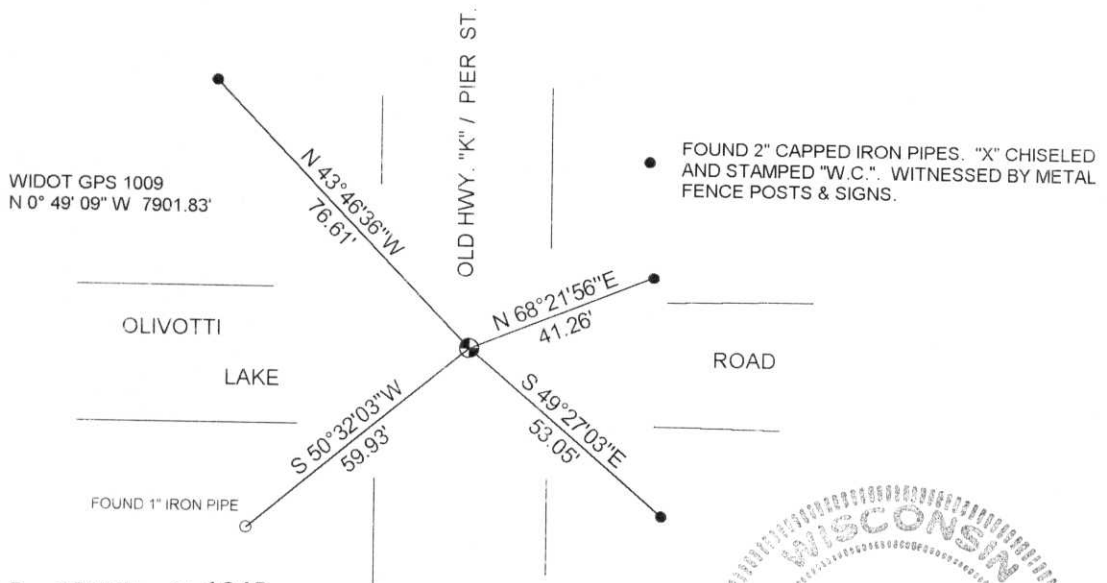
(b) (f) (g) (h) Description of monument found at this corner and if it was accepted, state all evidence (material, testimonial, occupational, plats, records, other monuments) used as a basis for accepting. If not accepted or if nothing was found, state evidence used as basis for establishing location. If reestablished through lost corner proportionate methods, indicate all monuments, distances and directions used to establish.

CORNER HISTORY ON FILE IN COUNTY SURVEYORS OFFICE

APRIL 1997 FOUND BERNTSEN MONUMENT AND TIES ESTABLISHED BY LAVERNE MOSHER IN AUGUST OF 1991. DISTANCES CHECKED.

RECEIVED AT LINCOLN COUNTY
COURTHOUSE THIS 2nd DAY
OF June 19 97
Pat Prillbe
TAX DESCRIPTION OFFICE

(c) (d) (e) Plan view of corner with ties to at least 4 witness monuments. If in disagreement with previously established corner, show the distances between the two corners and also indicate the ties to the disputed corner.

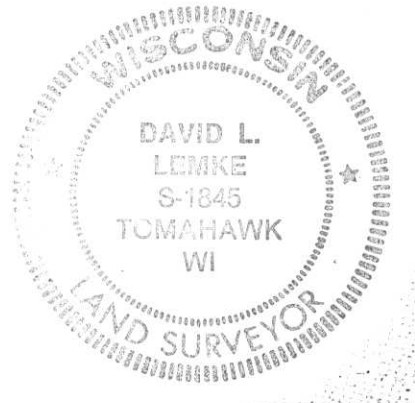


(i) I, DAVID L. LEMKE S-1845
(type or print name) certify that the corner location on this record was determined by me or under my direction and control and that this U.S. Public Land Survey Monument Record is correct and complete to the best of my knowledge and belief.

MAY 30 1997

Signature

Date

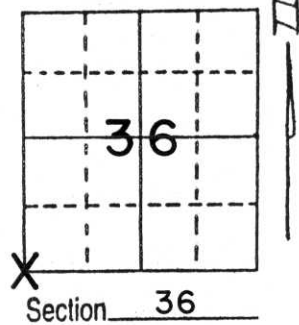


Index No. A-21

U.S. PUBLIC LAND SURVEY MONUMENT RECORD

Note: This form is intended and designed to fulfill all requirements of Wisconsin Administrative Code, Chapter A-E 5.02, U.S. Public Land Survey Monument Record (3) (a) (b) (c) (d) (e) (f) (g) (h) (i). An additional sheet may be added if necessary to conform with said requirements.

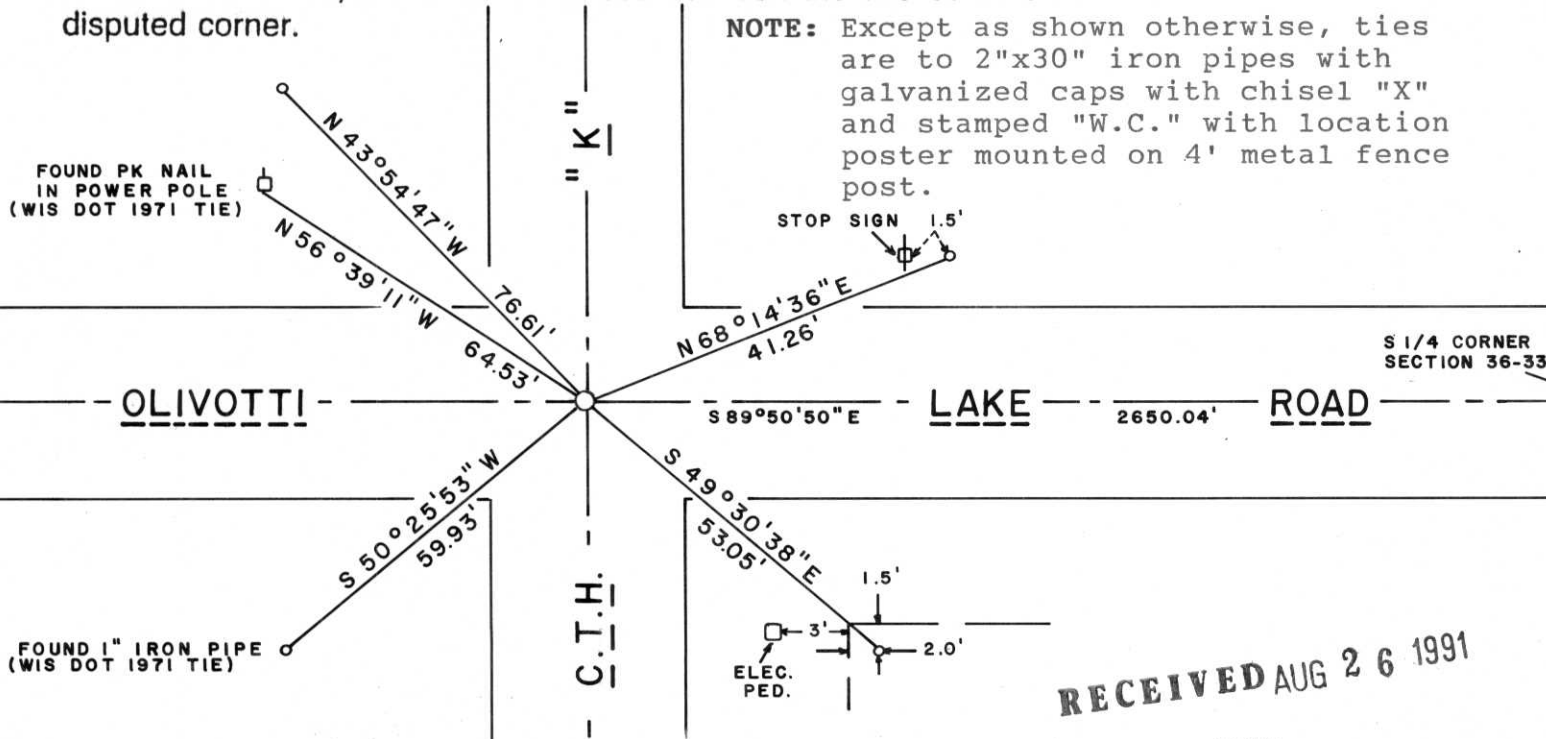
(a) Corner location: Township 33 North
Range 6 East/~~West~~
Town/City/Village ROCK FALLS
County LINCOLN



(b) (f) (g) (h) Description of monument found at this corner and if it was accepted, state all evidence (material, testimonial, occupational, plats, records, other monuments) used as a basis for accepting. If not accepted or if nothing was found, state evidence used as basis for establishing location. If reestablished through lost corner proportionate methods, indicate all monuments, distances and directions used to establish.

Field notes provided by Wisconsin Department of Transportation Rhinelander office indicate that a 1" iron pipe was found in roadway surface on May 4, 1971 by William Scherer, R.L.S. On this date, we recovered the said 1" iron pipe along with two 1971 Department of Transportation ties; said pipe about 6 inches below roadway surface. Iron pipe has been used as corner of record for recent surveys, hence accepted pipe as best location of corner and tied out. Set an aluminum Berntsen monument cap directly above said point for corner.

(c) (d) (e) Plan view of corner with ties to at least 4 witness monuments. If in disagreement with previously established corner, show the distances between the two corners and also indicate the ties to the disputed corner.



RECEIVED AUG 26 1991



Index No. P-21

(i) I, LaVerne H. Mosher
(type or print name) certify that the corner location on this record was determined by me or under my direction and control and that this U.S. Public Land Survey Monument Record is correct and complete to the best of my knowledge and belief.

LaVerne H. Mosher AUGUST 2, 1991
Signature Date

INDEX (cont)

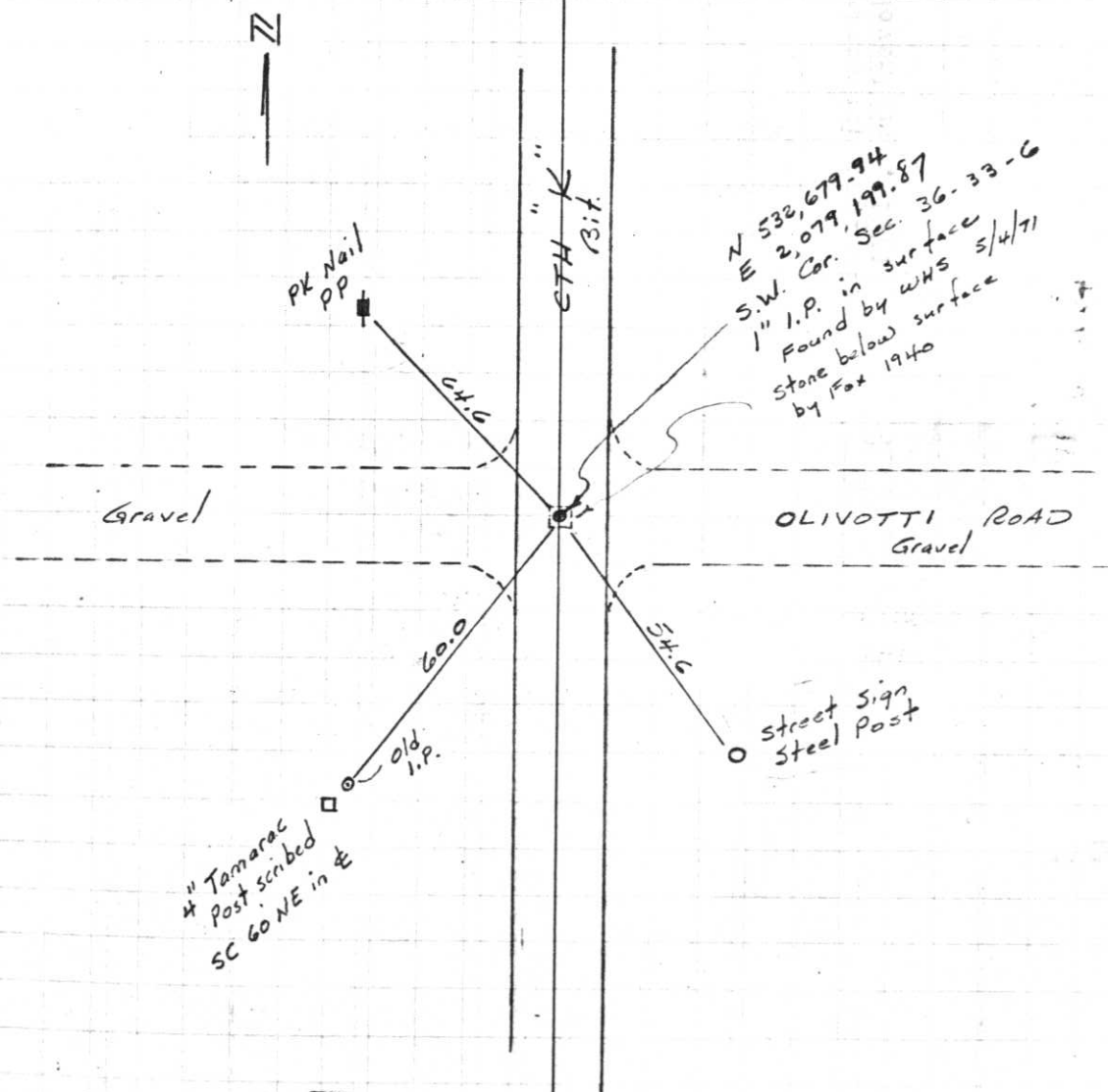
	Page
59.) N.W. Cor. Sec. 8-33-7E	59.
60.) E. 1/4 Cor. Sec. 6-33-7E	60.
61.) Center Sec. 6-33-7E	61.
62.) W. 1/4 Cor. Sec. 6-33-6 1/2 7E	62.
63.) N.E. Cor. Sec. 6-33-7E	63.
64.) N. 1/4 Cor. Sec. 6-33-7E	64.
65.) N.W. Cor. Sec. 6-33-6 1/2 7E	65.
66.) E. 1/4 Cor. Sec. 31-34-7E	66.
67.) Center Sec. 31-34-7E	67.
68.) W. 1/4 Cor. Sec. 31-34-6 1/2 7E	68.
69.) N.E. Cor. Sec. 31-34-7E	69.
70.) N. 1/4 Cor. Sec. 31-34-7E	70.
71.) N.W. Cor. Sec. 31-34-6 1/2 7E	71.
72.) E. 1/4 Cor. Sec. 30-34-7E	72.
73.) Center Sec. 30-34-7E	73.
74.) W. 1/4 Cor. Sec. 30-34-6 1/2 7E	74.
75.) N.E. Cor. Sec. 30-34-7E	75.
76.) N. 1/4 Cor. Sec. 30-34-7E	76.
77.) N.W. Cor. Sec. 30-34-6 1/2 7E	77.
78.) E. 1/4 Cor. Sec. 19-34-7E	78.
79.) Center Sec. 19-34-7E	79.
80.) W. 1/4 Cor. Sec. 19-34-6 1/2 7E	80.
81.) N. 1/4 Cor. Sec. 19-34-7E	81.
82.) N.W. Cor. Sec. 19-34-6 1/2 7E	82.
83.) N. 1/4 Cor. Sec. 24-34-6E	83.
84.) N.W. Cor. Sec. 24-34-6E	84.

76.

T 33 N

R 6 E

May 4, 1971



Project I.D. 1173-5-00 1.4 Mi. N.
 Merrill-C.T.H. "s" U.S.H. 51
 Freeway Lincoln County Wm. Scherer
 Surveyor Received from Division of
 Hwy's. Jan. 11. 1973



2002 10 16



2002 10 16



2002 10 16



2002 10 16