

# U.S. PUBLIC LAND SURVEY MONUMENT RECORD

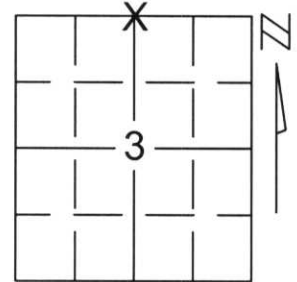
Note: This form is intended and designed to fulfill all requirements of Wisconsin Administrative Code, Chapter A-E 5.02, U.S. Public Land Survey Monument Record (3)(a)(b)(c)(d)(e)(f)(g)(h)(i). An additional sheet may be added if necessary to conform with said requirements.

(a) Corner location: Township 32 North

Range 6 East

Town/City/Village MERRILL

County LINCOLN

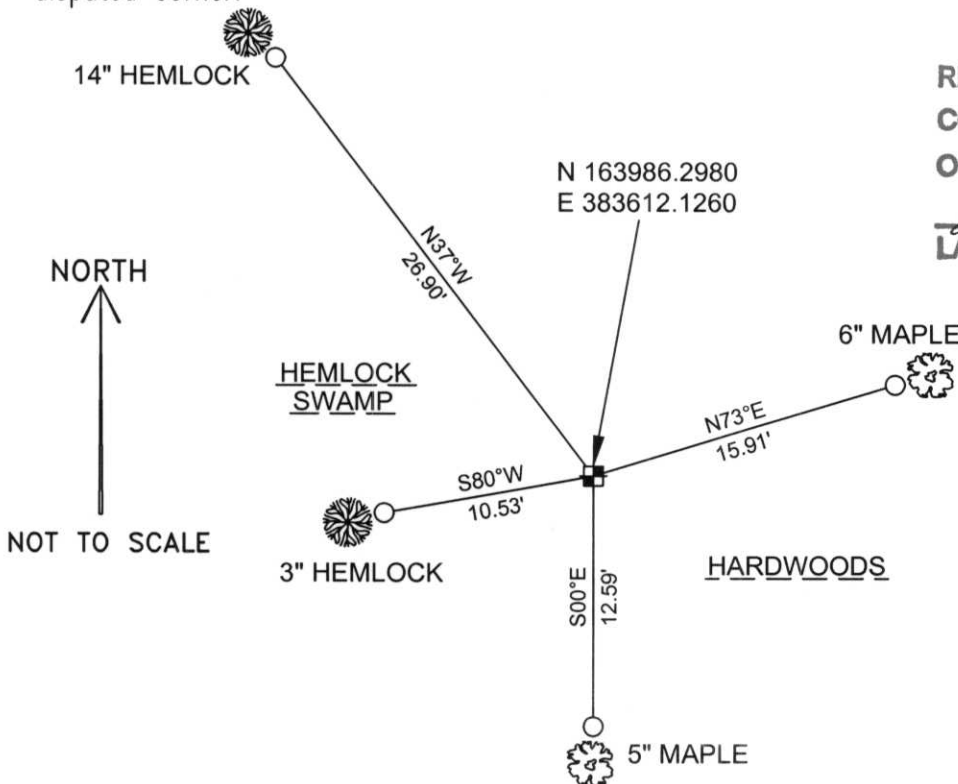


Section 3

(b)(f)(g)(h) Description of monument found at this corner and if it was accepted, state all evidence (material, testimonial, occupational, plats, records, other monuments) used as a basis for accepting. If not accepted or if nothing was found, state evidence used as basis for establishing location. If reestablished through lost corner proportionate methods, indicate all monuments, distances and directions used to establish.

I SEARCHED AN AREA DETERMINED BY MEASURE TO NEARBY CORNERS AND FOUND A 6" X 6" SCRIBED GRANITE STONE FROM FRANCIS FOX SURVEY OF THE TOWN OF ROCK FALLS. EVIDENCE OF OCCUPATION IN THE AREA POINTS TOWARD THE STONE, EXCEPT A TOWN ROAD 1/4 MILE EAST OF THE CORNER WHICH IF EXTENDED WEST TO THE CORNER FALLS ABOUT 60 FEET SOUTH OF THE STONE. THIS ROAD SEEMES TO BE A STRAIGHT EXTENSION OF THE ROAD IN THE NEXT SECTION EAST OF SECTION 3. I ACCEPTED THE STONE AS THE BEST AVAILABLE EVIDENCE OF THE CORNER'S ORIGINAL LOCATION. I SET TIES AS SHOWN BELOW TO PERPETUATE CORNER LOCATION.

(c)(d)(e) Plan view of corner with ties to at least 4 witness monuments. If in disagreement with previously established corner, show the distances between the two corners and also indicate the ties to the disputed corner.



RECEIVED AT LINCOLN COUNTY  
COURTHOUSE THIS 3<sup>RD</sup> DAY  
OF December 20 02  
*Jerry Dalk*  
LAND INFORMATION OFFICE

COORDINATES ARE REFERENCED TO THE LINCOLN COUNTY COORDINATE SYSTEM AS DEVELOPED BY THE WISCONSIN DEPARTMENT OF TRANSPORTATION AND WERE DETERMINED BY GPS OBSERVATIONS ON CONTROL POINTS AS SUPPLIED BY LINCOLN COUNTY.

BEARINGS ARE REFERENCED TO MAGNETIC NORTH.

- - SET 3/4" x 30" REBAR W/ ALUM CAP 1' FROM BEARING TREE
- ⊕ - NORTH 1/4 CORNER FOUND 6" x 6" GRANITE STONE

(i) I, David A. Renaud, RLS S-2142, certify that the corner location on this record was determined by me or under my direction and control and that this U.S. Public Land Survey Monument Record is correct and complete to the best of my knowledge and belief.

*David Renaud 11-29-02*  
Signature \_\_\_\_\_ Date \_\_\_\_\_



Index No. 33262

A-15