

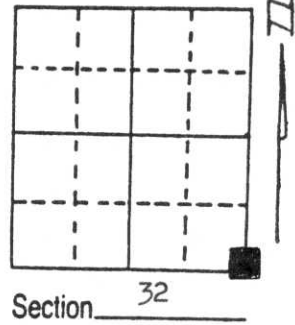
# U.S. PUBLIC LAND SURVEY MONUMENT RECORD

**Note:** This form is intended and designed to fulfill all requirements of Wisconsin Administrative Code, Chapter A-E 5.02, U.S. Public Land Survey Monument Record (3) (a) (b) (c) (d) (e) (f) (g) (h) (i). An additional sheet may be added if necessary to conform with said requirements.

(a) Corner location: Township 33 North  
 Range 6 East

Town/City/Village Rock Falls

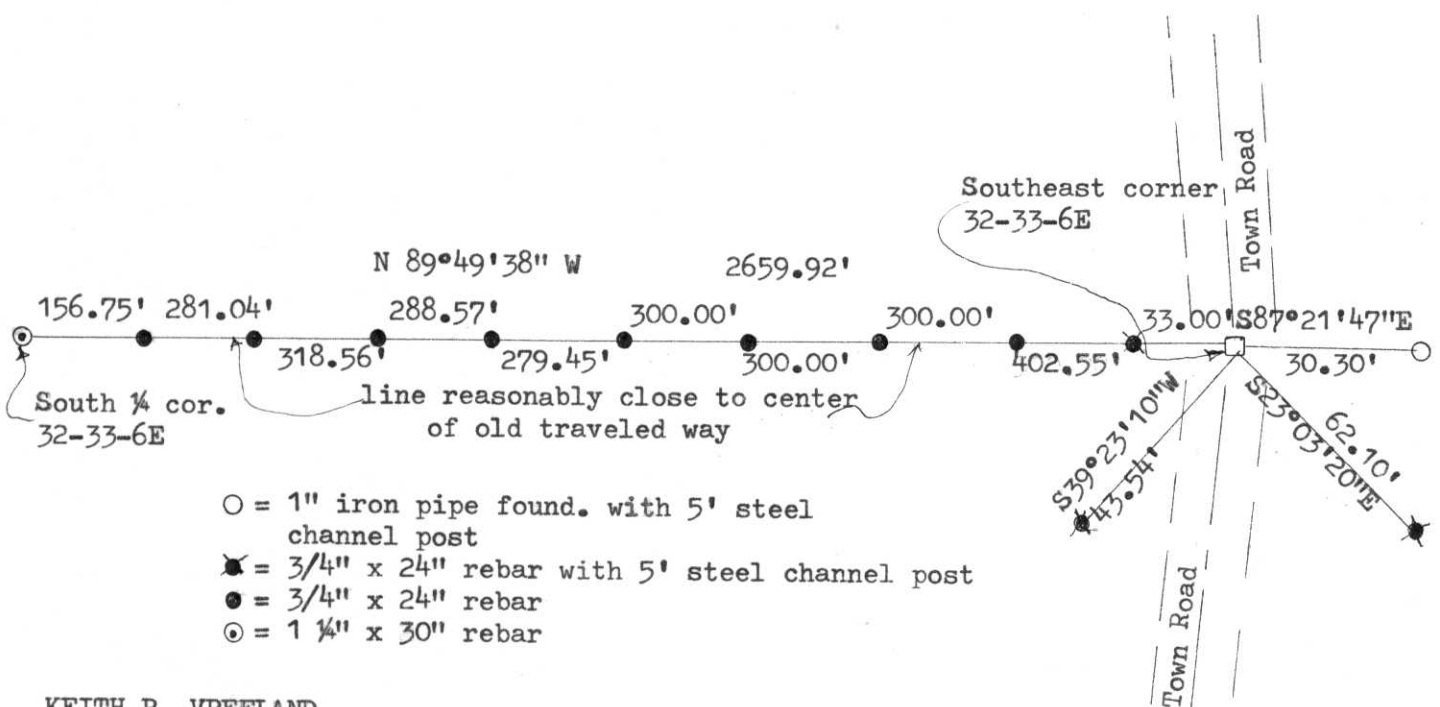
County Lincoln



(b) (f) (g) (h) Description of monument found at this corner and if it was accepted, state all evidence (material, testimonial, occupational, plats, records, other monuments) used as a basis for accepting. If not accepted or if nothing was found, state evidence used as basis for establishing location. If reestablished through lost corner proportionate methods, indicate all monuments, distances and directions used to establish.

Reviewed typewritten copy of old survey notes on file with County Surveyors Office at the Courthouse. Notes labeled "West BET. 5-32, T 32-33". Stone monuments normally set at that time. Dug with a backhoe and found a 8" x 8" gray granite stone 2 feet below surface of the Town Road. Stone has a polished top with an "X" on top and the 4 Section Numbers the corner affects. Fits possession lines and the "old traveled way" to the west. Accepted as correct.

(c) (d) (e) Plan view of corner with ties to at least 4 witness monuments. If in disagreement with previously established corner, show the distances between the two corners and also indicate the ties to the disputed corner.



- = 1" iron pipe found. with 5' steel channel post
- = 3/4" x 24" rebar with 5' steel channel post
- = 3/4" x 24" rebar
- ⊙ = 1 1/4" x 30" rebar

KEITH R. VREELAND

(i) I, Keith R. Vreeland  
 (type or print name) certify that the corner location on this record was determined by me or under my direction and control and that this U.S. Public Land Survey Monument Record is correct and complete to the best of my knowledge and belief.

Keith R. Vreeland      9-29-94  
 Signature      Date



Index No. 1-9