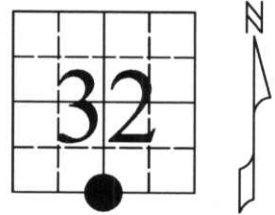


# U.S. PUBLIC LAND SURVEY MONUMENT RECORD

Note: This form is intended and designed to fulfill all requirements of Wisconsin Administrative Code, Chapter A-E 7.08, U.S. Public Land Survey Monument Record (3) (a) (b) (c) (d) (e) (f) (g) (h) (i). An additional sheet may be added if necessary to conform with said requirements.

(a) Corner Location: Township 33 North  
 Range 6 East  
 Town/City/Village Rock Falls  
 County Lincoln



(b) (f) (g) (h) Description of monument found at this corner and if it was accepted, state all evidence (material, testimonial, occupational, plats, records, other monuments) used as a basis for accepting. If reestablished through lost corner proportionate methods, indicate all monuments, distances and directions used to establish.

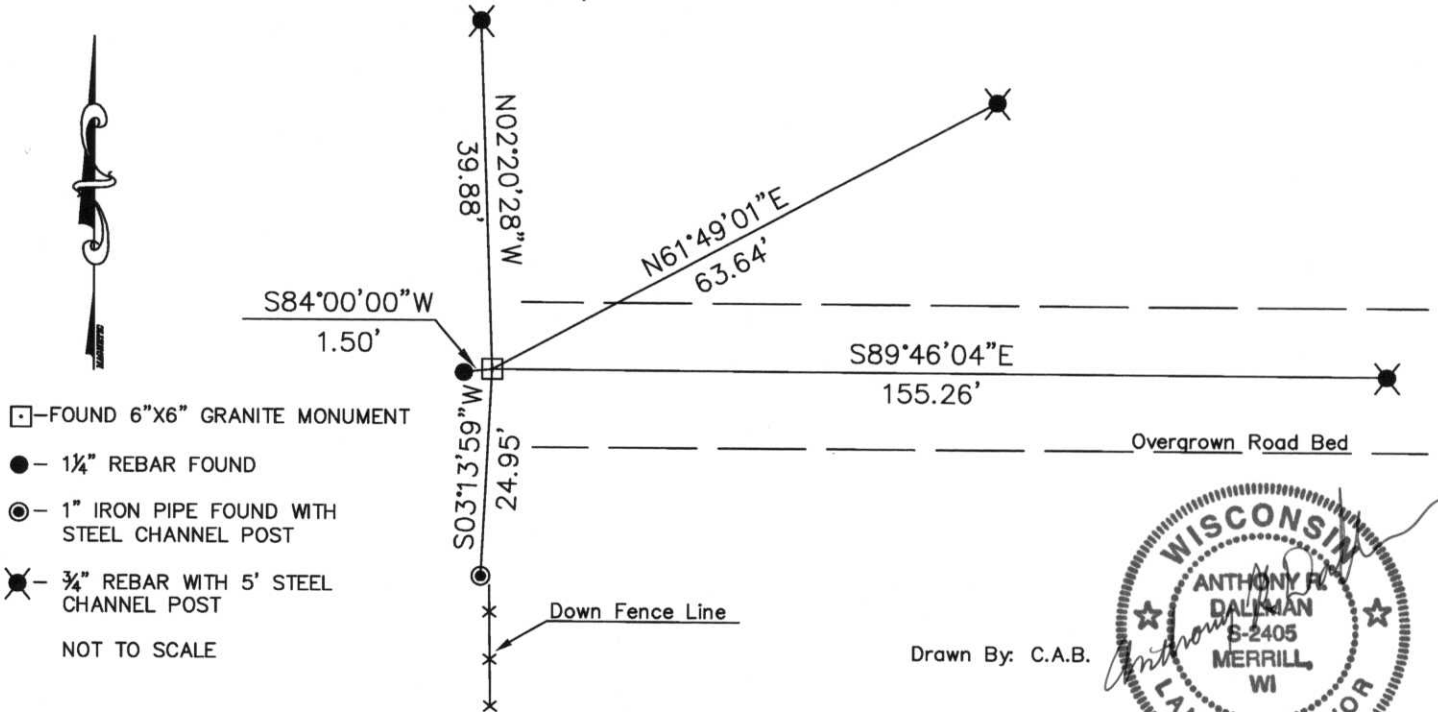
1851 July-Aug. — Marsh, J. M. set post for 1/4 Section corner: Birch 30 S1E 13  
 Sugar 12 S20W 9  
 Hemlock 12 N12W 17  
 Sugar 14 N31E 23

1940 — Francis X. Fox — In subdividing Rock Falls West between Sections 5 and 32 T32N and T33N, set 1/4 corner south 3.8 feet at centerline of road and fence line. Offset iron pipe south 24.75 feet.

1994 Sept. — Keith R. Vreeland — Found Fox's offset iron pipe and old fence, searched for stone at 24.75 feet north of said iron pipe, did not find granite monument, and set a 1 1/4" x 30" rebar with 5' steel channel post.

2008 May — Anthony Dallman — Found Fox's offset pipe and Vreeland's 1 1/4" rebar, used Fox's notes to obtain a position using dist.-dist. intersection from the NW corner and the Center 1/4 of Sec. 5, T32N, R6E. Found scribed granite monument down 10" in old road bed. Vreeland's 1 1/4" rebar bears S84°W 1.5 feet from granite.

(c) (d) (e) Plan view of corner with ties to at least 4 witness monuments. If in disagreement with previously established corner, show the distances between the two corners and also indicate the ties to the disputed corner.



(i) I, Anthony R. Dallman

(type or print name) certify that the corner location on this record was determined by or under my direction and control and that this U.S. Public Land Survey Monument Record is correct and complete to the best of my knowledge and belief.

Signature Anthony R. Dallman Date 6/05/08

Index No. 1-7

# U.S. PUBLIC LAND SURVEY MONUMENT RECORD

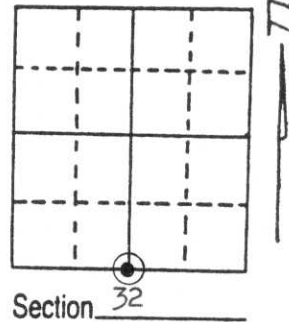
**Note:** This form is intended and designed to fulfill all requirements of Wisconsin Administrative Code, Chapter A-E 5.02, U.S. Public Land Survey Monument Record (3) (a) (b) (c) (d) (e) (f) (g) (h) (i). An additional sheet may be added if necessary to conform with said requirements.

(a) Corner location: Township 33 North

Range 6 East

Town/City/Village Rock Falls

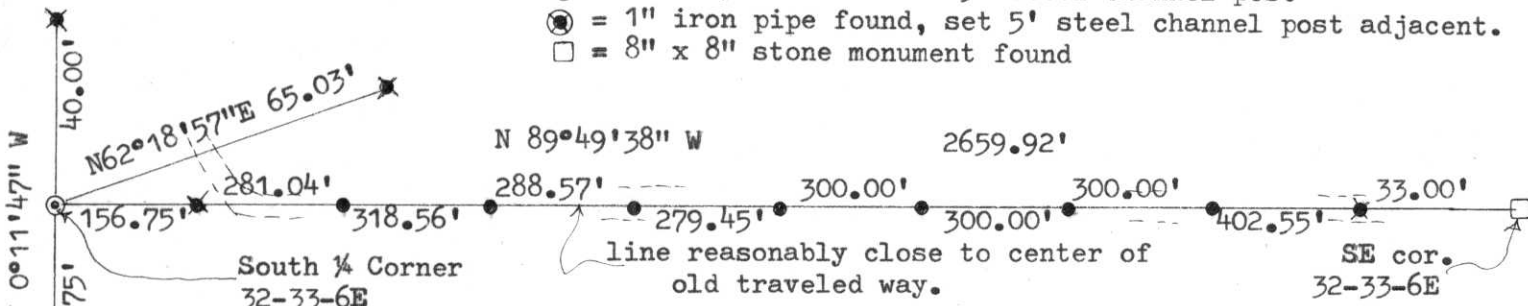
County Lincoln



(b) (f) (g) (h) Description of monument found at this corner and if it was accepted, state all evidence (material, testimonial, occupational, plats, records, other monuments) used as a basis for accepting. If not accepted or if nothing was found, state evidence used as basis for establishing location. If reestablished through lost corner proportionate methods, indicate all monuments, distances and directions used to establish. Reviewed typewritten copy of old survey notes on file with County Surveyors Office at the courthouse. Notes labeled "West BET. 5-32, T 32-33." Stone monuments normally set at that time. Distances shown on said notes appear to have one or more "typo errors" as measurements of "1350.1 feet to 1/16 corner" and "2679.1 feet to 1/4 corner" do not fit a required split to establish said 1/16 corner. Unable to get a backhoe to the site due to washouts of culverts at creek locations. Shot distances west from southeast corner to determine search area. At 2659.92' found a 1" iron pipe 24.75' of center of old traveled way extended. An old fence, at least 50 years, old leads south from the 1" iron pipe. Probed and dug by hand for a stone monument here and at location of distance east of southeast corner as called for. Found nothing. Accepted corner location 24.75 feet north of found 1" iron as best evidence. This location also accepted by "timber cruisers" evident by the blue paint on trees adjacent to and south of the found 1" iron pipe.

(c) (d) (e) Plan view of corner with ties to at least 4 witness monuments. If in disagreement with previously established corner, show the distances between the two corners and also indicate the ties to the disputed corner.

- ✕ = 3/4" x 24" rebar with 5' steel channel post
- = 3/4" x 24" rebar.
- ⊙ = 1 1/4" x 30" rebar with 5' steel channel post
- ⊗ = 1" iron pipe found, set 5' steel channel post adjacent.
- = 8" x 8" stone monument found



Keith R. Vreland

(i) I, \_\_\_\_\_  
(type or print name) certify that the corner location on this record was determined by me or under my direction and control and that this U.S. Public Land Survey Monument Record is correct and complete to the best of my knowledge and belief.

Signature

Date

9-29-94

Index No. 4-7

















