

U S PUBLIC LAND SURVEY MONUMENT RECORD

NOTE: This form is intended and designed to fulfill all requirements of Wisconsin Administrative Code, Chapter A-E 7.08 U.S. Public Land Survey Monument Record (3) (a-i)

A-E 7.08(3)(a) Identity of corner:
 SOUTH 1/4 CORNER SECTION 31,
 TOWNSHIP 33 NORTH,
 RANGE 06 EAST OF THE 4TH PM,
 TOWN OF ROCK FALLS,
 COUNTY OF LINCOLN

WISCORS - LINCOLN COUNTY
 N: 164,044.220 USft (164,044.220)
 E: 367,643.780 USft (367,643.780)
 Datum: NAD83 (2011)
 GNSS Method RTK
 Base from GNSS Control set WISCORS VRS



The coordinate value shown has been verified by the average of two or more GPS observations at a markedly different time. Coordinates shown in parenthesis are provided by Lincoln County.

A-E 7.08(3)(b)

Original Surveyor: James M. Marsh

Date of Original Survey Commenced: July 29, 1851
 Completed: August 11, 1851

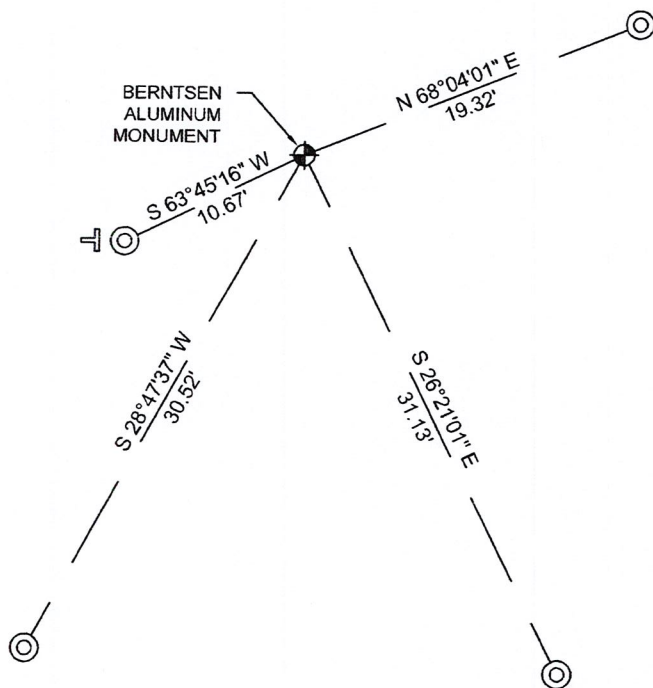
Original Accessories:
 Sugar 11 N 68° E 31 links
 Sugar 10 S 18° E 36 links
 Maple 8 S 18° W 15 links
 Birch 8 N 28° W 4 links

1941 - Francis X. Fox (aka Francis X. Fuchs) - Survey of TWP., 32 & 33 N. ~ R.6 E. Town of Rock Falls - indicates "set corners to all forties on all quarter & section lines" on Map M136A.

December 2, 2022 - While performing the 2022 Lincoln County PLSS Corner Remonumentation and GPS Services project, I went to the coordinate position provided by Lincoln County, I made a careful search of the area and found no evidence of the corner or witnesses. The County provided location falls near the center of Ripley Creek, and is ±6 feet from the west bank, ± 4 feet from the east bank. Under the direction of Lincoln County, I restored the corner using coordinates provided by Lincoln County and set a Berntsen aluminum monument - 1" diameter X 32" long aluminum pipe, with a 2.5" diameter aluminum cap. This monument was set from ties previously measured with GNSS/RTK. I established 4 new reference monuments as shown below.

NOTE: The granite stone may be in the creek bottom, because the creek was froze over at the time of search I was unable to find it.

A-E 7.08(3)(c)(d) Plan view of corner with references to at least 4 witness monuments.



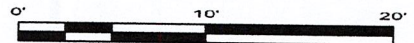
BEARINGS LISTED TO THE NEAREST SECOND ARE REFERENCED TO WISCONSIN COUNTY COORDINATE REFERENCE SYSTEM - LINCOLN COUNTY ZONE. ALL OTHER BEARINGS ARE MAGNETIC



RECEIVED BY LINCOLN COUNTY SURVEYOR THIS 27TH DAY OF December 20 22
Jeffrey DeMuth
 COUNTY SURVEYOR

LEGEND

- 1" diameter X 32" long -aluminum pipe with 2.5" diameter aluminum cap, set
- 1" diameter X 32" long -aluminum pipe with 2.5" diameter aluminum cap, set
- Vinyl T-post, set ±0.5 feet west of witness



A-E 7.08(3)(e) 1851 Surveyor set a post, 1941 set a granite stone monument. I set a Berntsen aluminum monument.

A-E 7.08(3)(f) I restored the corner through ACCEPTANCE OF AN OBLITERATED LOCATION.

A-E 7.08(3)(g)(h) This corner was not determined through lost-corner-proportionate methods.

A-E 7.08(3)(i) I, Jeffrey L. DeMuth, Professional Land Surveyor No. S-2656, hereby certify that the corner location on this record was determined by the Lincoln County Surveyor, and the monuments found or set as shown hereon were measured by me or under my direction and control, and that this U.S. Public Land Survey Monument Record is correct and complete to the best of my knowledge, and belief.

Jeffrey L. DeMuth
 SIGNATURE
 December 14, 2022
 DATE



1-3

REPORT

2022-Lincoln County PLSS Corner Remonumentation and GPS Services

Wisconsin Corner Point Identification Number: 43306310020

Surveyor: Jeffrey L. DeMuth – S2656

Corner monument: Set Berntsen aluminum monument - 1" diameter X 32" long aluminum pipe with 2.5" diameter Lincoln Co. aluminum cap.

Field Book: Cardinal North – Lincoln Co. Remon. – 2022-00

Page: 73

Horizontal Datum: WisCRS – Lincoln County Zone – NAD83(2011)

Date / time of initial measurement:

NA

Reference monuments:

4 – Set - 1" diameter X 32" long aluminum pipe with 2.5" diameter Lincoln Co. aluminum cap.

Coordinate Table

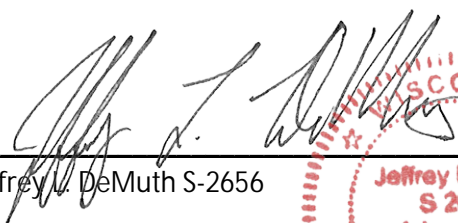
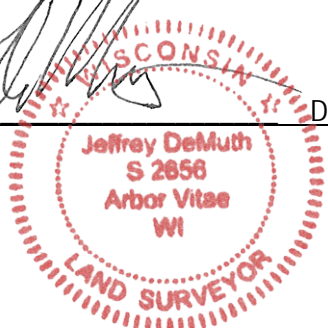
	County Provided	2022 Measurement	Difference
North	164044.220	164044.220	0.00
East	367643.780	367643.780	0.00

~~Observed coordinates match with existing coordinates within reason.~~

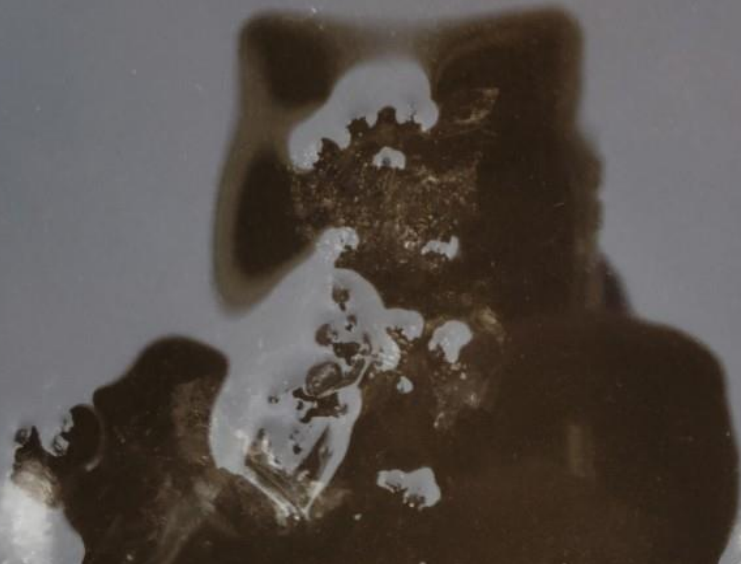
~~Request Data Log for more information.~~

Additional Notes:

Corner falls $\pm 6'$ east of the west bank, and $\pm 4'$ west of the east bank of Ripley Creek. Monument was set by measuring from witnesses set previously. Monument was not observed/measured with GPS.


 Jeffrey L. DeMuth S-2656
 
 December 12, 2022
 Date

43306310020_Mon-N



43306310020_North



43306310020_West



43306310020_South



43306310020_East



43306310020_NoMon



43306310020_North-NoMon



43306310020_West-NoMon



43306310020_South-NoMon



43306310020_East-NoMon

