

U.S. PUBLIC LAND SURVEY MONUMENT RECORD

NOTE: This form is intended and designed to fulfill all requirements of Wisconsin Administrative Code, Chapter A-E 7.08 U.S. Public Land Survey Monument Record. An additional sheet may be added if necessary to conform with said requirements.

CORNER LOCATION

Quarter Corner common to Sections 33 and 34
Township 33 North, Range 6 East of the 4th P.M.
Town of Rock Falls, Lincoln County, Wisconsin

6	5	4	3	2	1
7	8	9	10	11	12
18	17	16	15	14	13
19	20	21	22	23	24
30	29	28	27	26	25
31	32	33	34	35	36

T33N - R6E

HISTORY OF ORIGINAL CORNER ESTABLISHMENT

ORIGINAL SURVEYOR: Jackson Prentice
DATE OF SURVEY: October - November 1852
ORIGINAL ACCESSORIES: at 80.0 ch. set corner post
10" Hemlock, S56°W, 15 lks
12" Birch, S74°E, 44 lks
11" Birch, N52°E, 61 lks
14" Elm, S1°W, 81 lks

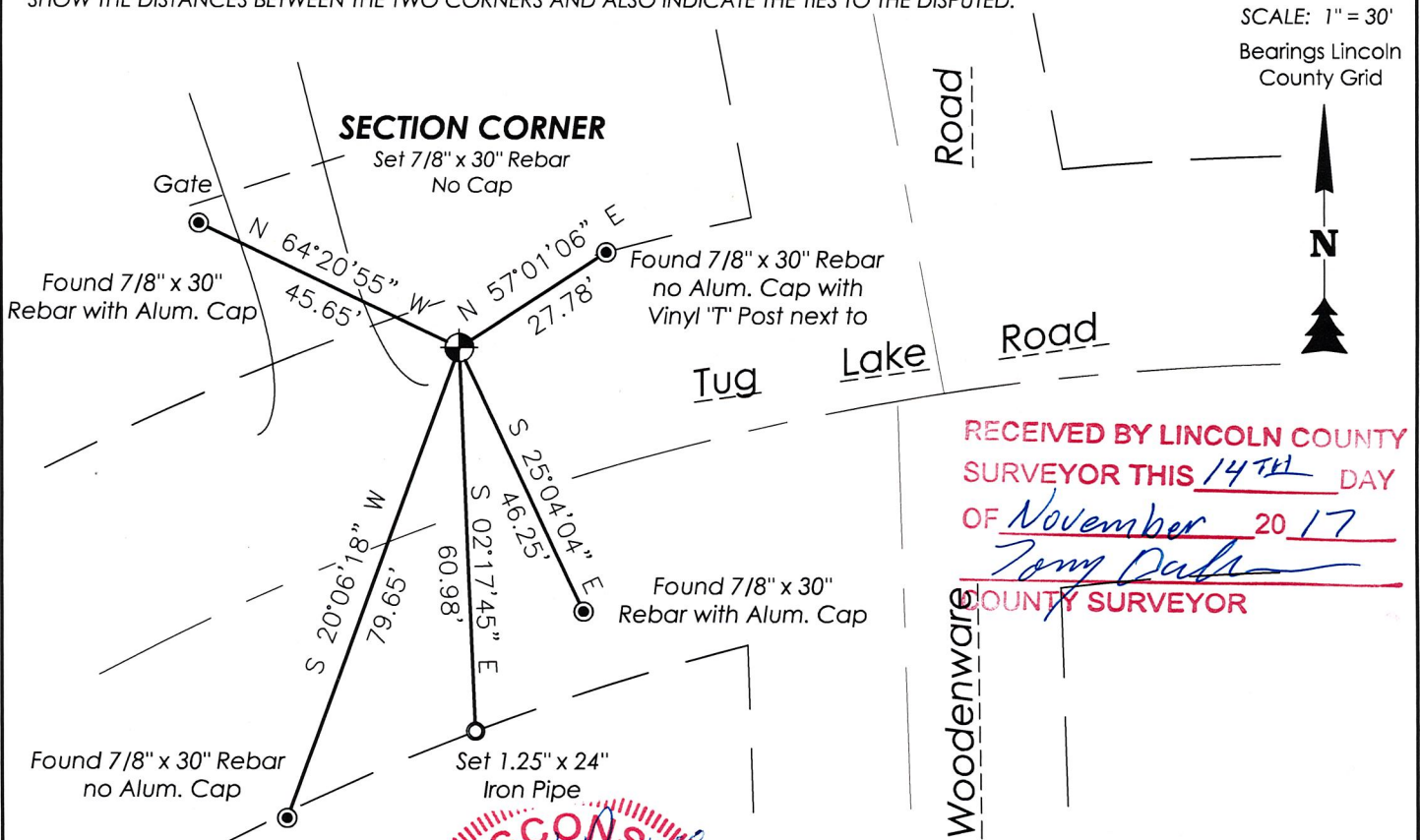
DESCRIPTION OF MONUMENT FOUND AT THIS CORNER AND IF IT WAS ACCEPTED, STATE ALL EVIDENCE (MATERIAL, TESTIMONIAL, OCCUPATIONAL, PLATS, RECORDS, OTHER MONUMENTS) USED AS A BASIS FOR ACCEPTING. IF NOT ACCEPTED OR IF NOTHING WAS FOUND, STATE EVIDENCE USED AS BASIS FOR ESTABLISHING LOCATION. IF RE-ESTABLISHED THROUGH LOST CORNER PROPORTIONATE METHODS, INDICATE ALL MONUMENTS, DISTANCES AND DIRECTIONS USED TO ESTABLISH. INDICATE TYPE OF MONUMENT AND SIGN POST FOUND OR SET.

1941 - Francis X. Fox survey for the Town of Rock Falls, in surveying area found no original evidence. Tied into corners in cardinal directions from location and set up a double proportion between the NW Corner of Section 27 and the West Quarter Corner of Section 34, as well as the Southwest Corner of Section 28 and the North Quarter Corner of Section 34. Set a stone at section corner four feet west of pipe culvert, 5" below top of ground in ditch on north side of road. Set an iron stake at stone 6" out of ground.

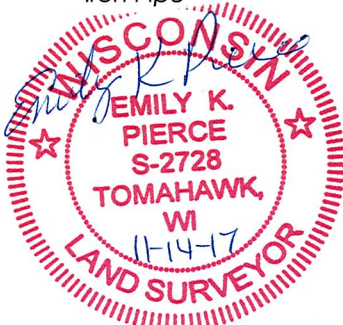
12/13/2000 David Lemke visited corner location and found no evidence. Local resident, Irvin King, said the corner was on the north edge of the road in line with a power line heading south. Set a 1.25" x 30" iron pipe at record distances from the East Quarter Corner and South Quarter Corner of Section 28. Set four Lincoln County Witness caps as ties to the corner.

11/10/2017, I visited corner location and found all four ties remaining. They are 7/8" Rebars, two of which had caps remaining. Monument at corner location no longer exists due to culvert replacement at nearby driveway. Ties intersected well, but did not fit either record distance to East Quarter Corner and South Quarter Corner of Section 28 as indicated by Lemke. Tied into all four Quarter corners in each cardinal direction as Fox established in 1941. Distances measured by Fox tied within +/- 2 feet in either direction. Used double proportion methods between quarter corners in cardinal directions to equally distribute the errors between 1941 measurements and today's measurements to re-create Fox's 1941 position as best as can. Set a 7/8" Rebar with no cap at the location and measured to remaining ties. Also set a 1.25" iron pipe to the south in conjunction with a CSM. See measurements to quarter corners used in proportioning on second sheet.

PLAN VIEW OF CORNER WITH TIES TO AT LEAST 4 WITNESS MONUMENTS. IF IN DISAGREEMENT WITH PREVIOUSLY ESTABLISHED CORNER, SHOW THE DISTANCES BETWEEN THE TWO CORNERS AND ALSO INDICATE THE TIES TO THE DISPUTED.



RECEIVED BY LINCOLN COUNTY
SURVEYOR THIS 14TH DAY
OF November 20 17
Tom Dahn
COUNTY SURVEYOR



I, Emily K. Pierce, Professional Land Surveyor No. S-2728, hereby certify that the corner location on this record was determined by me or under my direction and control and that this U.S. Public Land Survey Monument Record is correct and complete to the best of my knowledge and belief.

Emily K. Pierce

U-13

U.S. PUBLIC LAND SURVEY MONUMENT RECORD

NOTE: This form is intended and designed to fulfill all requirements of Wisconsin Administrative Code, Chapter A-E 7.08 U.S. Public Land Survey Monument Record. An additional sheet may be added if necessary to conform with said requirements.

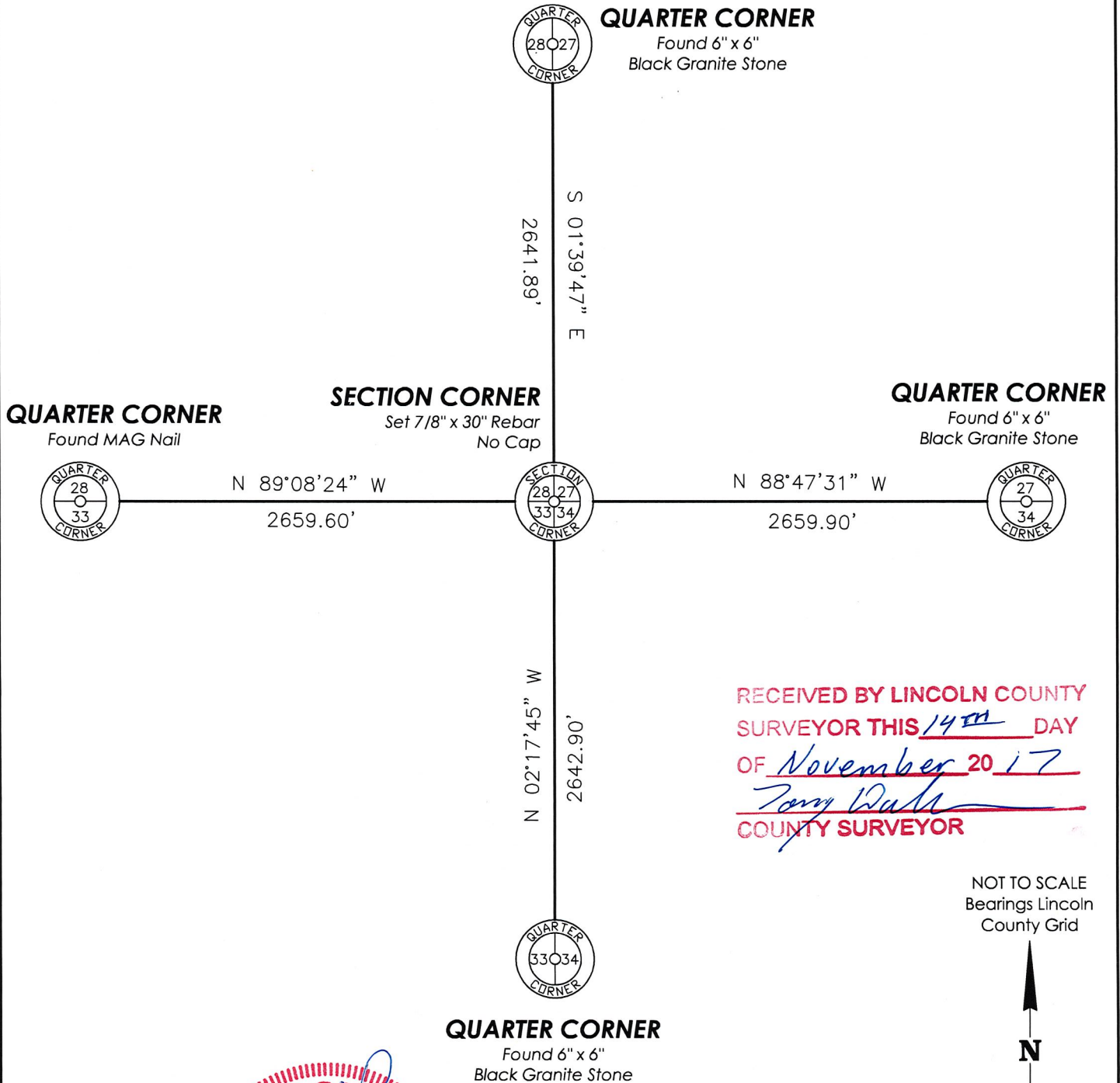
CORNER LOCATION
 Quarter Corner common to Sections 33 and 34
 Township 33 North, Range 6 East of the 4th P.M.
 Town of Rock Falls, Lincoln County, Wisconsin

6	5	4	3	2	1
7	8	9	10	11	12
18	17	16	15	14	13
19	20	21	22	23	24
30	29	28	27	26	25
31	32	33	34	35	36

T33N - R6E

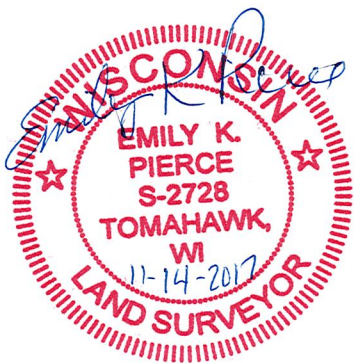
HISTORY OF ORIGINAL CORNER ESTABLISHMENT

ORIGINAL SURVEYOR: Jackson Prentice
 DATE OF SURVEY: October - November 1852
 ORIGINAL ACCESSORIES: at 80.0 ch. set corner post
 10" Hemlock, S56°W, 15 lks
 12" Birch, S74°E, 44 lks
 11" Birch, N52°E, 61 lks
 14" Elm, S1°W, 81 lks



RECEIVED BY LINCOLN COUNTY
 SURVEYOR THIS 14th DAY
 OF November 20 17
Tony Dahn
 COUNTY SURVEYOR

NOT TO SCALE
 Bearings Lincoln
 County Grid



I, Emily K. Pierce, Professional Land Surveyor No. S-2728, hereby certify that the corner location on this record was determined by me or under my direction and control and that this U.S. Public Land Survey Monument Record is correct and complete to the best of my knowledge and belief.

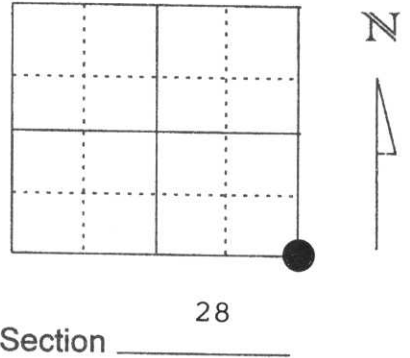
Emily K. Pierce

 Emily K. Pierce, PLS No. S-2728
 STEIGERWALDT LAND SURVEYING, LLC

U.S. PUBLIC LAND SURVEY MONUMENT RECORD

Note: This form is intended and designed to fulfill all requirements of Wisconsin Administrative Code, Chapter A-E 5.02, U.S. Public Land Survey Monument Record (3) (a) (b) (c) (d) (e) (f) (g) (h) (l). An additional sheet may be added if necessary to conform with said requirements.

(a) Corner location: Township 33 North
 Range 6 East
 Town/City/Village TN. OF ROCK FALLS
 County Lincoln



(b) (f) (g) (h) Description of monument found at this corner and if it was accepted, state all evidence (material, testimonial, occupational, plats, records, other monuments) used as a basis for accepting. If not accepted or if nothing was found, state evidence used as basis for establishing location. If reestablished through lost corner proportionate methods, indicate all monuments, distances and directions used to establish.

IN 1941 FOX SET A STONE ALONG THE NORTHERLY EDGE OF TUG LAKE AVE. EXCAVATED THE AREA AND FOUND NO EVIDENCE OF STONE.

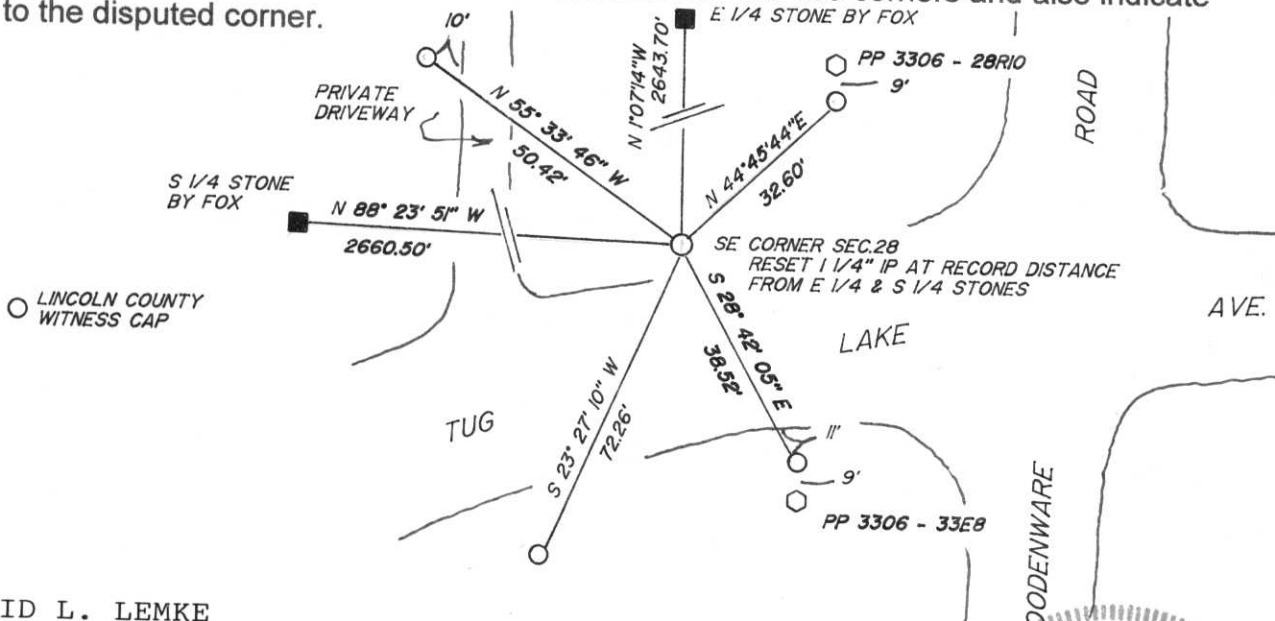
A LOCAL RESIDENT, IRVIN KING SAID THE CORNER WAS ON THE NORTH EDGE OF THE ROAD IN LINE WITH A POWER LINE HEADING SOUTH.

I RESET A 1 1/4" X 30" IRON PIPE AT RECORD DISTANCES FROM THE E 1/4 STONE AND THE S 1/4 STONE.

CORNER FELL IN THE AREA MR. KING POINTED OUT

RECEIVED AT LINCOLN COUNTY
 COURTHOUSE THIS 14TH DAY
 OF December 20 00
Tony Wallman
 LAND INFORMATION OFFICE

(c) (d) (e) Plan view of corner with ties to at least 4 witness monuments. If in disagreement with previously established corner, show the distances between the two corners and also indicate the ties to the disputed corner.



(l) I, DAVID L. LEMKE

(type or print name) certify that the corner location on this record was determined by me or under my direction and control and that this U.S. Public Land Survey Monument Record is correct and complete to the best of my knowledge and belief.

Signature

Date

DEC. 13 2000

