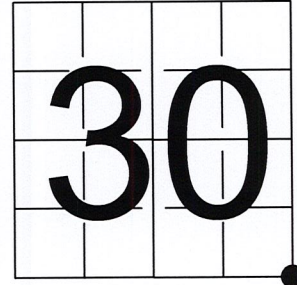


# U S PUBLIC LAND SURVEY MONUMENT RECORD

NOTE: This form is intended and designed to fulfill all requirements of Wisconsin Administrative Code, Chapter A-E 7.08 U.S. Public Land Survey Monument Record (3) (a-i)

A-E 7.08(3)(a) Identity of corner:  
SOUTHEAST CORNER SECTION 30,  
TOWNSHIP 33 NORTH,  
RANGE 06 EAST OF THE 4TH PM,  
TOWN OF ROCK FALLS,  
COUNTY OF LINCOLN

WISCRS - LINCOLN COUNTY  
N: 169,369.433 USft (169,369.449)  
E: 370,224.629 USft (370,224.589)  
Datum: NAD83 (2011)  
GNSS Method RTN - Direct  
GNSS Control WISCORS VRS



The coordinate value shown has been verified by the average of two or more GPS observations at a markedly different time. Coordinates shown in parenthesis are provided by Lincoln County.

A-E 7.08(3)(b)

Original Surveyor: Jackson L. Prentice

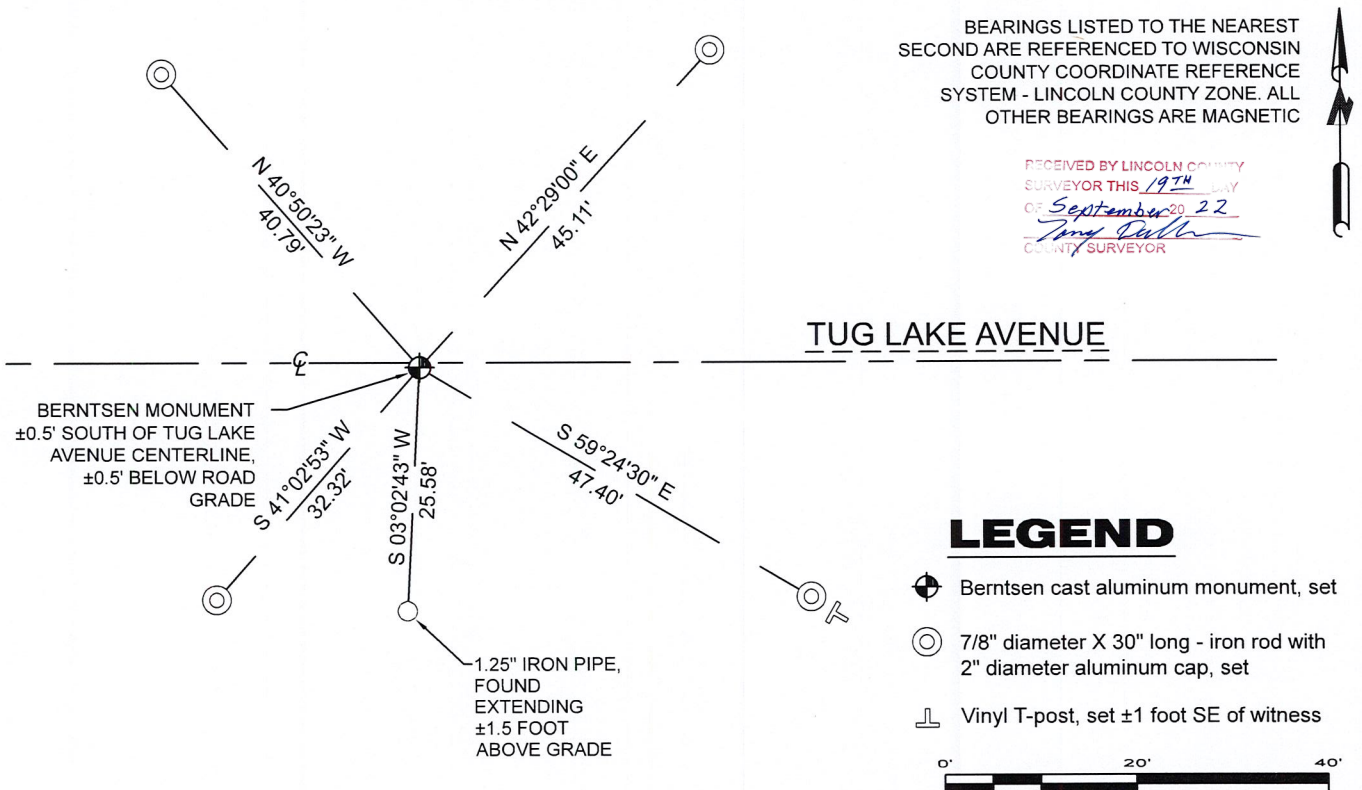
Date of Original Survey	Commenced:	October 27, 1852	Original Accessories:		
	Completed:	November 9, 1852	Birch	10	S 21° W 51 Links
			Birch	9	S 60° E 15 Links
			Birch	10	N 10° E 22 Links
			Tamarac	10	N 57° W 20 Links

1941 - Francis X. Fox - Survey of TWP., 32 & 33 N. ~ R.6 R. Town of Rock Falls - indicates "set corners to all forties on all quarter & section lines" on Map M136A.

May 23, 2022 - While performing the 2022 Lincoln County PLSS Corner Remonumentation and GPS Services project, I went to the coordinate position provided by Lincoln County, I made a careful search of the area and found no evidence of the corner or witnesses. The County provided location is 0.5 feet south of Tug Lake Avenue centerline and ±26 feet west of a woods road to the south.

July 19, 2022 - Lincoln County Surveyor 2405 - Anthony R. Dallman - along with 2 highway department workers and myself excavated the road way surrounding the county position and again found no evidence of the corner or witnesses. Under the direction of Lincoln County, I restored the corner using coordinates provided by Lincoln County and set a 29.5" long Berntsen cast aluminum monument with a 4 diameter aluminum cap stamped to identify the corner position. I established 4 new reference monuments as shown below.

A-E 7.08(3)(c)(d) Plan view of corner with references to at least 4 witness monuments.



A-E 7.08(3)(e) 1852 Surveyor set a post, 1941 Surveyor did not describe the monument. I set a Berntsen cast aluminum monument at coordinates provided by Lincoln County.

A-E 7.08(3)(f) I restored the corner through ACCEPTANCE OF AN OBLITERATED LOCATION.

A-E 7.08(3)(g)(h) This corner was not determined through lost-corner-proportionate methods.

A-E 7.08(3)(i) I, Jeffrey L. DeMuth, Professional Land Surveyor No. S-2656, hereby certify that the corner location on this record was determined by the Lincoln County Surveyor, and the monuments found or set as shown hereon were measured by me or under my direction and control, and that this U.S. Public Land Survey Monument Record is correct and complete to the best of my knowledge, and belief.



SIGNATURE

September 16, 2022

DATE

## REPORT

### 2022-Lincoln County PLSS Corner Remonumentation and GPS Services

Wisconsin Corner Point Identification Number: 43306300000

Surveyor: Jeffrey L. DeMuth – S2656

Corner monument: Set Berntsen cast aluminum monument – 4" diameter cap x 29.5" long, at coordinates provided.

Field Book: Cardinal North – Lincoln Co. Remon. – 2022-00

Page: 16

Horizontal Datum: WisCRS – Lincoln County Zone – NAD83(2011)

Date / time of initial measurement:

July 19, 2022 - Start 12:17:02 CDT – End 12:36:05 CDT

Reference monuments:

4 – Set - 7/8" diameter X 30" long iron rods with 2" diameter Lincoln Co. aluminum cap.

1 – Found – 1.25" diameter iron pipe.

#### Coordinate Table

	County Provided	2022 Measurement	Difference
North	169369.449	169369.433	0.02
East	370224.589	370224.629	-0.04

Established coordinates match existing calculated coordinates within reason.

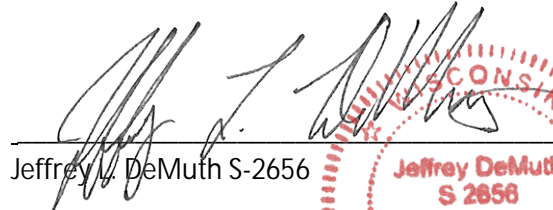
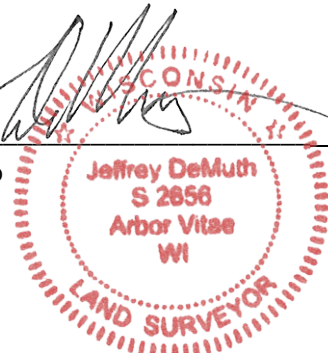
Request Data Log for more information.

#### Additional Notes:

Dug corner with county crew on July 19, 2022 and did not find.

Corner falls 0.5 feet south of Tug Lake Avenue centerline, ±0.5 feet below road grade, and ±26 feet west of a wood's road to the south.

Email from County Surveyor indicates the position was determined by "doubling through Fox's East 1/4 corner, and Fox's East 1/16<sup>th</sup> corner of NE of Section 31."

  
 Jeffrey L. DeMuth S-2656
 
 September 16, 2022  
 Date

4330630000\_Mon-N



4330630000\_North



43306300000\_West



4330630000\_South



43306300000\_East

