

# U.S. PUBLIC LAND SURVEY MONUMENT RECORD

NOTE: THIS FORM IS INTENDED AND DESIGNED TO FULFILL ALL REQUIREMENTS OF WISCONSIN ADMINISTRATIVE CODE, CHAPTER A-E 7.08, U.S. PUBLIC LAND SURVEY MONUMENT RECORD (3)(a)(b)(c)(d)(e)(f)(g)(h)(i). ADDITIONAL SHEETS MAY BE NECESSARY TO CONFORM TO SAID REQUIREMENTS.

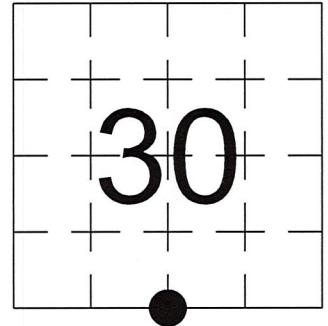
T 33 N, R 6 E

**(a) CORNER LOCATION:**

SOUTH 1/4 CORNER, SECTION 30  
 TOWNSHIP 33 NORTH  
 RANGE 6 EAST  
 TOWN OF ROCK FALLS  
 LINCOLN COUNTY  
 WISCONSIN

**(b) HISTORY OF ORIGINAL CORNER:**

ORIGINAL SURVEYOR: Jackson L. Prentice, Set Post  
 COMMENCING DATE: October 27, 1852  
 COMPLETION DATE: November 9, 1852  
 ORIGINAL BEARING TREES:  
 10" Cedar; N 31° E; 14 links  
 12" Hemlock; S 64° W; 35 links



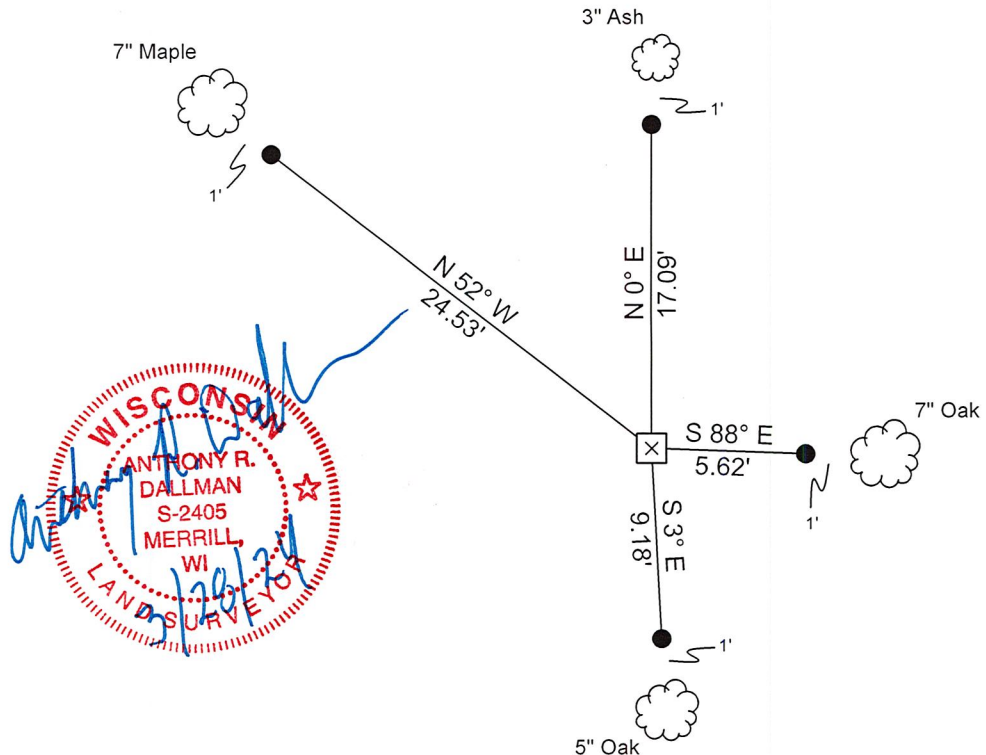
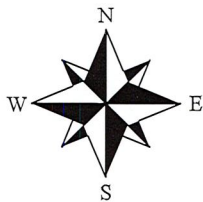
**(f)(g)(h) DESCRIPTION OF MONUMENT FOUND AT THIS CORNER AND IF IT WAS ACCEPTED. STATE ALL EVIDENCE (MATERIAL, TESTIMONIAL, OCCUPATIONAL, PLATS, RECORDS, OTHER MONUMENTS) USED AS A BASIS FOR ESTABLISHING LOCATION. IF RE-ESTABLISHING THROUGH LOST CORNER PROPORTIONATE METHODS, INDICATE ALL MONUMENTS, DISTANCES, AND DIRECTIONS USED TO ESTABLISH. INDICATE TYPE OF MONUMENTS FOUND OR SET.**

1940, Francis Fox, set a Stone Monument.

3/14/2024, I, Anthony R. Dallman, PLS-2405, found a 6" X 6" Granite Monument, down 14". I accepted this location and set witness monuments, as shown in the sketch below, to further perpetuate the corner location.

**(c)(d)(e) PLAN VIEW OF THE CORNER WITH TIES TO AT LEAST FOUR WITNESSES. IF IN DISAGREEMENT WITH PREVIOUSLY ESTABLISHED CORNER, SHOW THE DISTANCES BETWEEN THE TWO CORNERS AND ALSO THE TIES TO THE DISPUTED CORNER.**

- Tie bearings by hand-held compass.
- Tie distances by steel tape.
- Not to scale.



- - Set 3/4" Capped Rebar
- ⊥ - Set Vinyl Post



I, ANTHONY R. DALLMAN, WISCONSIN PROFESSIONAL LAND SURVEYOR, S-2405, HEREBY CERTIFY THAT THE CORNER LOCATION ON THIS RECORD WAS REFERENCED BY ME OR UNDER MY DIRECTION AND CONTROL AND THAT THIS U.S. PUBLIC LAND SURVEY MONUMENT RECORD IS COMPLETE TO THE BEST OF MY KNOWLEDGE AND BELIEF.

*Anthony R. Dallman* 3/28/24  
 ANTHONY R. DALLMAN, PLS S-2405

  
 Fox 12" Pine, now a stump  
 (S 21° E; 24.9')

INDEX NO. U-3

43306300020\_Mon-N



43306300020\_North



43306300020\_West



43306300020\_South



43306300020\_East

















10  
11

30  
31









