

# Attachment to Tie Sheet S-25, T33N, R6E

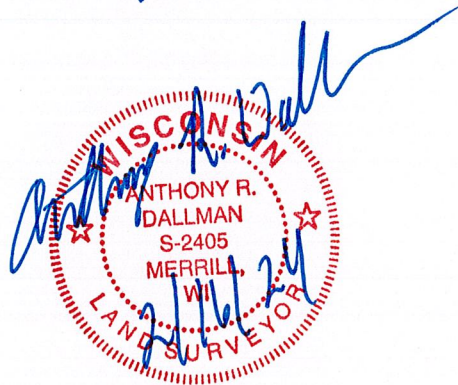
43306252000

I visited the corner on 8/31/2023 to verify the corner and reference tie monumentation. I found the SNM-1 Monument and all 5 ties from the David Goslin tie sheet (01/19/2001). The established Coordinates and ties agree with existing monument.

*Anthony R. Dallman* 02/16/24

Anthony R. Dallman, PLS-2405

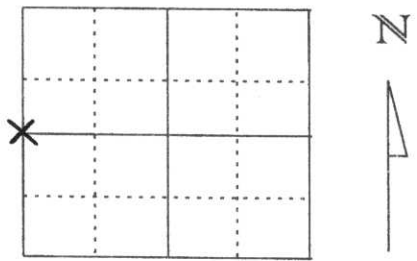
Lincoln County Surveyor



# U.S. PUBLIC LAND SURVEY MONUMENT RECORD

Note: This form is intended and designed to fulfill all requirements of Wisconsin Administrative Code, Chapter A-E 5.02, U.S. Public Land Survey Monument Record (3) (a) (b) (c) (d) (e) (f) (g) (h) (l). An additional sheet may be added if necessary to conform with said requirements.

(a) Corner location: Township 33 North  
 Range 7 East  
 Town/City/Village BIRCH  
 County Lincoln



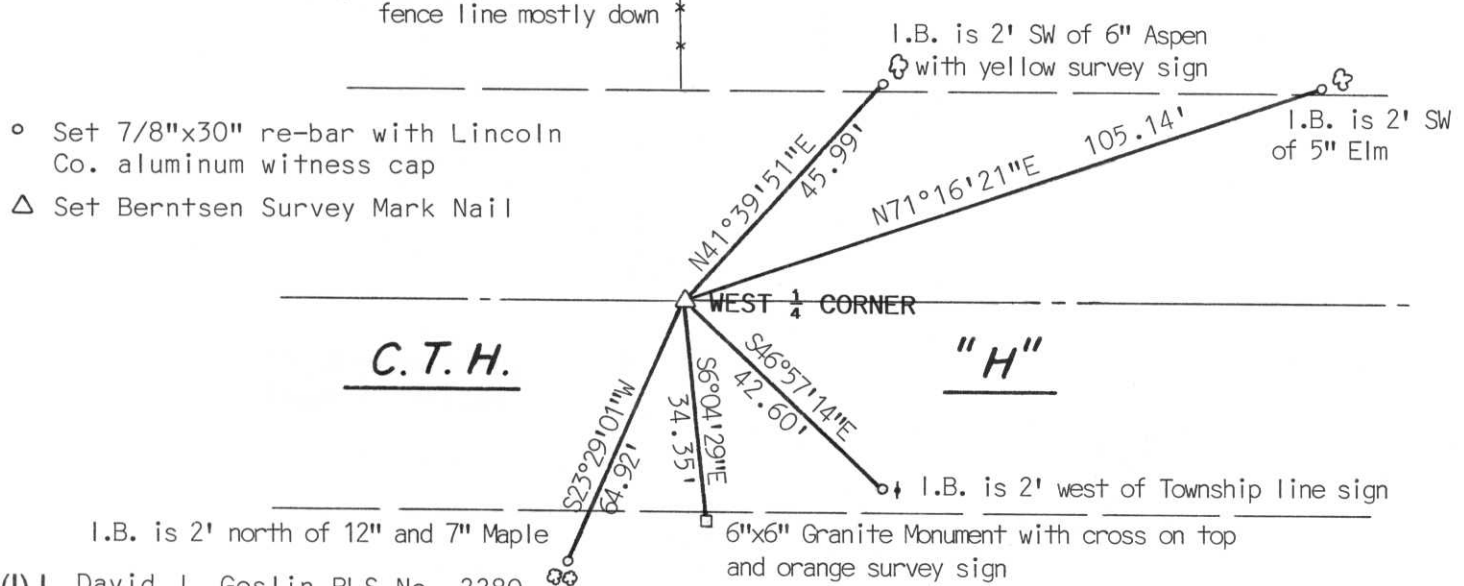
Section 30

(b) (f) (g) (h) Description of monument found at this corner and if it was accepted, state all evidence (material, testimonial, occupational, plats, records, other monuments) used as a basis for accepting. If not accepted or if nothing was found, state evidence used as basis for establishing location. If reestablished through lost corner proportionate methods, indicate all monuments, distances and directions used to establish.

F. Fox during the remonumentation of the Township of Rock Falls mentioned this corner as "1/4 stone set as identified by road and fenceline". We found a stone with a polished top and scribed Section numbers 25 and 30. The stone was found approximately 33 feet south of the centerline of C.T.H. "H". To verify this position we then measured from the Northwest corner of Section 30 south to 1/16 corner set by Fox. Continued south and located stone found 33± south of C.T.H. "H". Continued south to the Southwest corner of Section 30. After comparing the distances along the west line of Section 30 of Fox to ours it appeared the West 1/4 stone was moved south of its original location. Re-set West 1/4 on a single proportionate basis using a straight line from the Northwest corner of Section 30 through the 1/16 corner set by Fox. Corner position fits centerline of C.T.H. "H" well and is in line with old fence to the north. Accepted this position as the best evidence of the West 1/4 corner of Section 30. Set Berntsen Survey Mark Nail for corner. Corner falls 1.5' North of the Centerline.

Note: Measurements used to set corner on back.

(c) (d) (e) Plan view of corner with ties to at least 4 witness monuments. If in disagreement with previously established corner, show the distances between the two corners and also indicate the ties to the disputed corner.



(l) I, David J. Goslin RLS No. 2280  
 (type or print name) certify that the corner location on this record was determined by me or under my direction and control and that this U.S. Public Land Survey Monument Record is correct and complete to the best of my knowledge and belief.

David J. Goslin  
 Signature



1-19-01

RECEIVED AT LINCOLN COUNTY  
 COURTHOUSE THIS 23 DAY  
 OF Jan. 20 01  
Tony Dallman  
 LAND INFORMATION OFFICE

Index No. 5-1

Northwest corner Section 30  
6"x6" Granite Monument

(by Fox 2597.1')  
2603.06'

S4°04'58"E 1304.17'  
( by Fox 1298.55')

1/16 corner  
3/4" iron pipe

S4°04'58"E

West  $\frac{1}{4}$  corner  
Set Berntsen Survey Mark Nail

2592.86'

S3°40'32"E

(by Fox 2586.9')

Southwest corner Section 30  
6"x6" Granite Monument

LAND [unclear] [unclear]  
OF \_\_\_\_\_  
COURT [unclear] DAY \_\_\_\_\_  
REGISTRY [unclear] COUNTY





