

U.S. PUBLIC LAND SURVEY MONUMENT RECORD

NOTE: THIS FORM IS INTENDED AND DESIGNED TO FULFILL ALL REQUIREMENTS OF WISCONSIN ADMINISTRATIVE CODE, CHAPTER A-E 7.08, U.S. PUBLIC LAND SURVEY MONUMENT RECORD (3)(a)(b)(c)(d)(e)(f)(g)(h)(i). ADDITIONAL SHEETS MAY BE NECESSARY TO CONFORM TO SAID REQUIREMENTS.

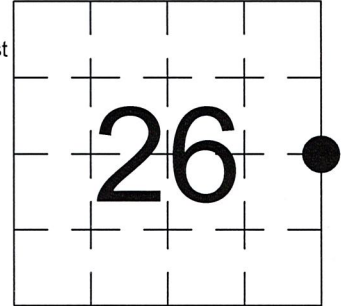
T 33 N, R 6 E

(a) CORNER LOCATION:

EAST QUARTER CORNER, SECTION 26
 TOWNSHIP 33 NORTH
 RANGE 6 EAST
 TOWN OF ROCK FALLS
 LINCOLN COUNTY
 WISCONSIN

(b) HISTORY OF ORIGINAL CORNER:

ORIGINAL SURVEYOR: Jackson L. Prentice, Set post
 COMMENCING DATE: October 27, 1852
 COMPLETION DATE: November 9, 1852
 ORIGINAL BEARING TREES:
 12" Tamarack; S 12° W; 14 links
 10" Tamarack; N 83° E; 14 links



(f)(g)(h) DESCRIPTION OF MONUMENT FOUND AT THIS CORNER AND IF IT WAS ACCEPTED. STATE ALL EVIDENCE (MATERIAL, TESTIMONIAL, OCCUPATIONAL, PLATS, RECORDS, OTHER MONUMENTS) USED AS A BASIS FOR ESTABLISHING LOCATION. IF RE-ESTABLISHING THROUGH LOST CORNER PROPORTIONATE METHODS, INDICATE ALL MONUMENTS, DISTANCES, AND DIRECTIONS USED TO ESTABLISH. INDICATE TYPE OF MONUMENTS FOUND OR SET.

1940-1943, Francis Fox set 6" X 6" Granite Monument at centerline of roads.

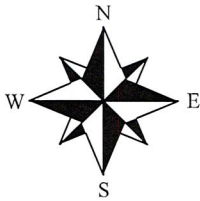
1971, Wm. Scherer found Fox's Granite and set R.R. Spike in surface and additional reference ties.

1977, David Lemke found Fox's Granite and set reference ties.

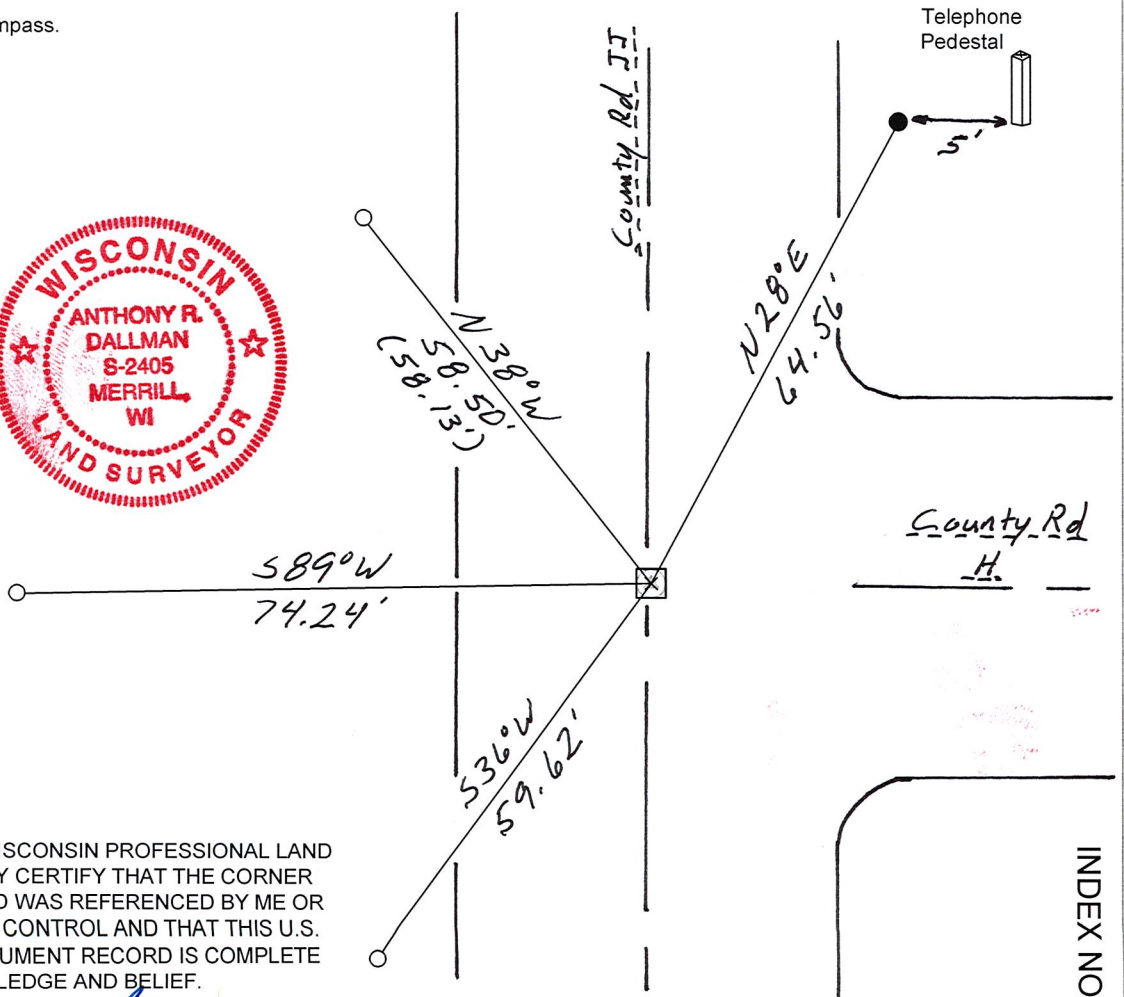
4/25/2019, I, Anthony R. Dallman, PLS-2405, found an SNM-1 Nail and 3 of Lemke's ties. I accepted this location and set a new reference tie to further perpetuate the corner location as shown in the sketch below.

(c)(d)(e) PLAN VIEW OF THE CORNER WITH TIES TO AT LEAST FOUR WITNESSES. IF IN DISAGREEMENT WITH PREVIOUSLY ESTABLISHED CORNER, SHOW THE DISTANCES BETWEEN THE TWO CORNERS AND ALSO THE TIES TO THE DISPUTED CORNER.

- Tie bearings by hand-held compass.
- Tie distances by steel tape.
- Not to scale.



- - Set 7/8" Capped Rebar
- - Found 7/8" Capped Rebar



I, ANTHONY R. DALLMAN, WISCONSIN PROFESSIONAL LAND SURVEYOR, S-2405, HEREBY CERTIFY THAT THE CORNER LOCATION ON THIS RECORD WAS REFERENCED BY ME OR UNDER MY DIRECTION AND CONTROL AND THAT THIS U.S. PUBLIC LAND SURVEY MONUMENT RECORD IS COMPLETE TO THE BEST OF MY KNOWLEDGE AND BELIEF.

Anthony R. Dallman 8/21/19
 ANTHONY R. DALLMAN, PLS S-2405

INDEX NO. 5-21

U.S. PUBLIC LAND SURVEY MONUMENT RECORD

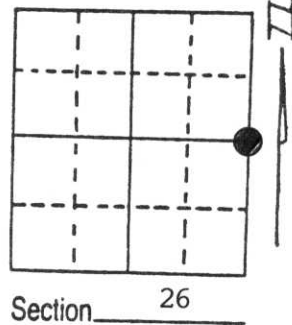
Note: This form is intended and designed to fulfill all requirements of Wisconsin Administrative Code, Chapter A-E 5.02, U.S. Public Land Survey Monument Record (3) (a) (b) (c) (d) (e) (f) (g) (h) (i). An additional sheet may be added if necessary to conform with said requirements.

(a) Corner location: Township 33 North

Range 6 East

Town/City/Village TN. OF ROCK FALLS

County LINCOLN

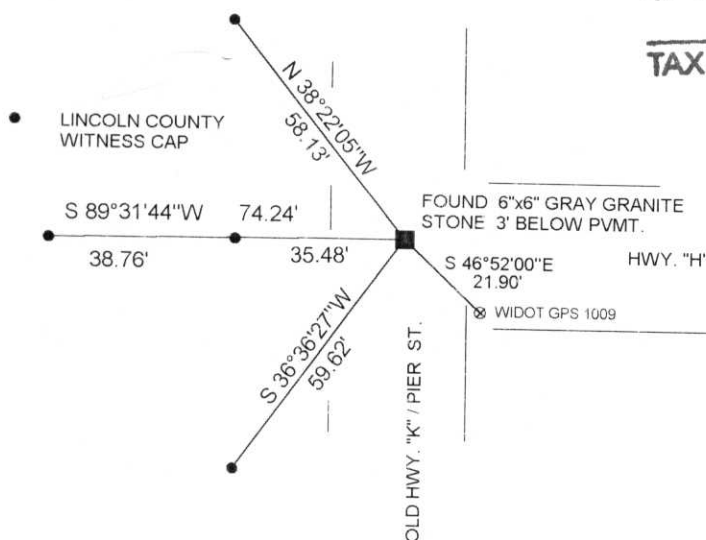


(b) (f) (g) (h) Description of monument found at this corner and if it was accepted, state all evidence (material, testimonial, occupational, plats, records, other monuments) used as a basis for accepting. If not accepted or if nothing was found, state evidence used as basis for establishing location. If reestablished through lost corner proportionate methods, indicate all monuments, distances and directions used to establish.

CORNER HISTORY ON FILE IN COUNTY SURVEYORS OFFICE

APRIL 1997 EXCAVATED ROAD BED EASTERLY OF A FOUND 1" IRON PIPE BY FOX SET IN 1940. FOUND A GRANITE STONE 3' BELOW PAVEMENT

(c) (d) (e) Plan view of corner with ties to at least 4 witness monuments. If in disagreement with previously established corner, show the distances between the two corners and also indicate the ties to the disputed corner.

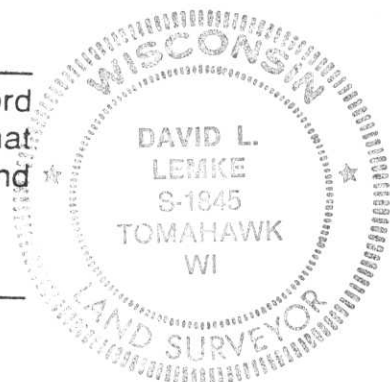


RECEIVED AT LINCOLN COUNTY
COURTHOUSE THIS 2nd DAY
OF June 19 97
Pat Priebe
TAX DESCRIPTION OFFICE

(i) I, DAVID L. LEMKE S-1845
(type or print name) certify that the corner location on this record was determined by me or under my direction and control and that this U.S. Public Land Survey Monument Record is correct and complete to the best of my knowledge and belief.

David L. Lemke
Signature

MAY 30 1997
Date



Index No. S - 21

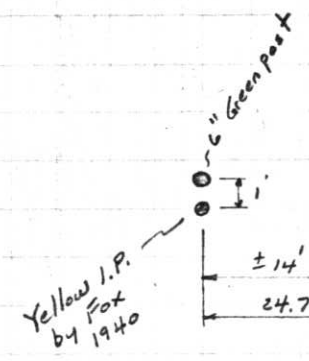
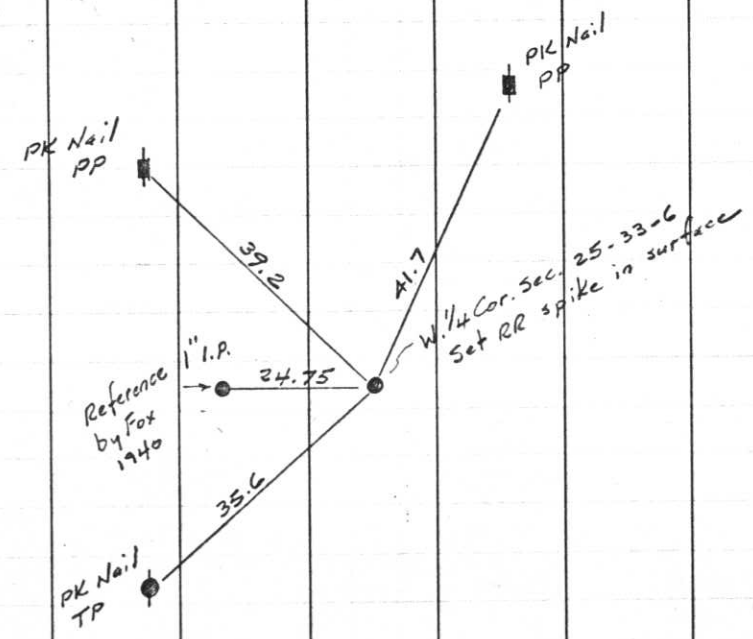
T33N

R6E

May 4, 1971

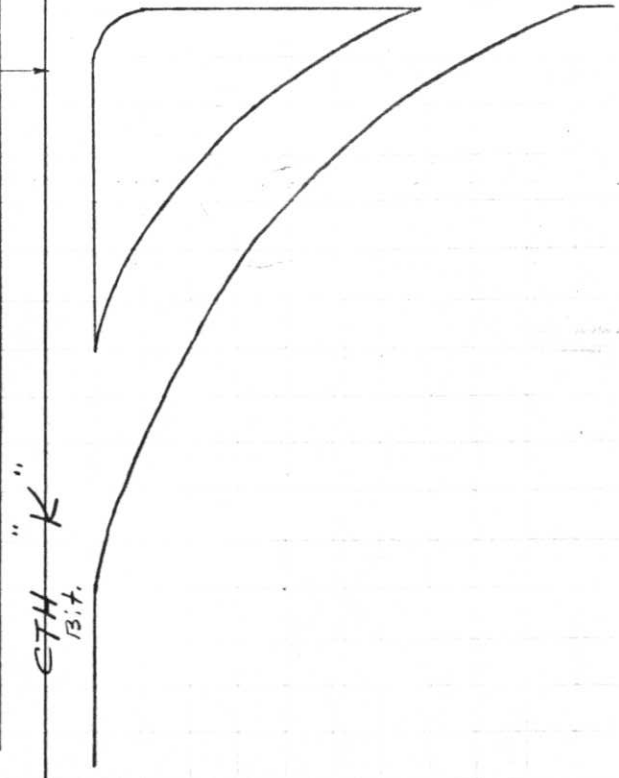
73.

REFERENCES



N 540, 593.99
 E 2,079, 058.43
 W. 1/4 Cor. Sec. 25-33-6
 stone under surface
 by Fox 1940
 Set R.R. Spike in surface
 using Fox's I.P. references

CTH "H"



CTH "K" 13.7'

Project I.D. 1173-5-00 1.4 Mi. N.
 Merrill-C.T.H. "s" U.S.H. 51
 Freeway Lincoln County Wm. Scherer
 Surveyor Received from Division of
 Hwys. Jan. 11. 1973









