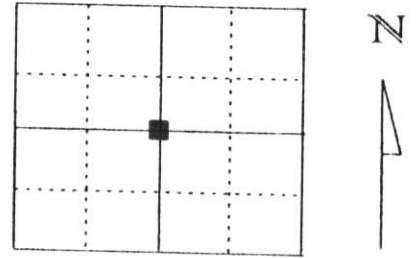


U.S. PUBLIC LAND SURVEY MONUMENT RECORD

Note: This form is intended and designed to fulfill all requirements of Wisconsin Administrative Code, Chapter A-E 5.02, U.S. Public Land Survey Monument Record (3) (a) (b) (c) (d) (e) (f) (g) (h) (l). An additional sheet may be added if necessary to conform with said requirements.

(a) Corner location: Township 33 North
 Range 6 East
 Town/City/Village ROCK FALLS
 County Lincoln



Center $\frac{1}{4}$ corner, Section 26

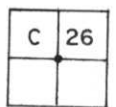
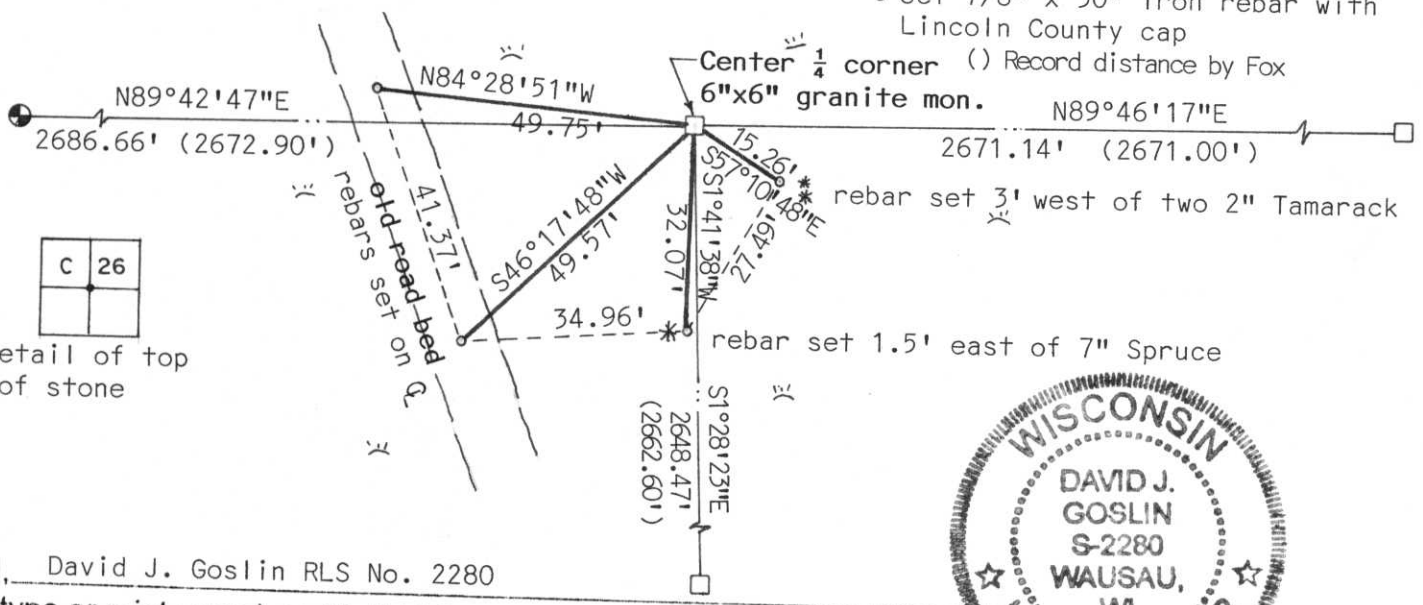
(b) (f) (g) (h) Description of monument found at this corner and if it was accepted, state all evidence (material, testimonial, occupational, plats, records, other monuments) used as a basis for accepting. If not accepted or if nothing was found, state evidence used as basis for establishing location. If reestablished through lost corner proportionate methods, indicate all monuments, distances and directions used to establish.

Corner was set by Francis Fox during the remonumentation of Rock Falls. According to notes by Fox the corner was a stone monument. Using the recorded distance from the East $\frac{1}{4}$ corner and the recorded distance from a $\frac{3}{4}$ " iron pipe we found at the southwest corner of the NW $\frac{1}{4}$ of the SE $\frac{1}{4}$, we measured to the corner location and found a red granite monument with polished top flush with ground. Corner falls in Tamarack and Spruce swamp 265 feet west of creek that flows south. Set orange survey post on north side of monument.

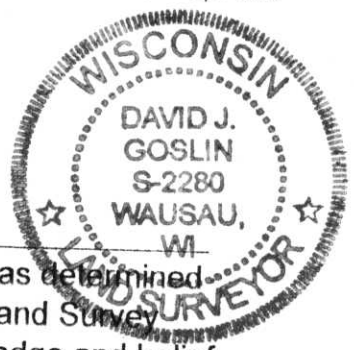
**RECEIVED AT LINCOLN COUNTY
 COURTHOUSE THIS 1st DAY
 OF Feb. 2000
Pat Priske
 LAND INFORMATION OFFICE**

(c) (d) (e) Plan view of corner with ties to at least 4 witness monuments. If in disagreement with previously established corner, show the distances between the two corners and also indicate the ties to the disputed corner.

o Set 7/8" x 30" iron rebar with Lincoln County cap
 () Record distance by Fox
 Center $\frac{1}{4}$ corner
 6"x6" granite mon.
 rebar set 3' west of two 2" Tamarack
 rebar set 1.5' east of 7" Spruce



Detail of top of stone



(l) I, David J. Goslin RLS No. 2280
 (type or print name) certify that the corner location on this record was determined by me or under my direction and control and that this U.S. Public Land Survey Monument Record is correct and complete to the best of my knowledge and belief.

David J. Goslin 1-28-00
 Signature Date

Index No. S-19