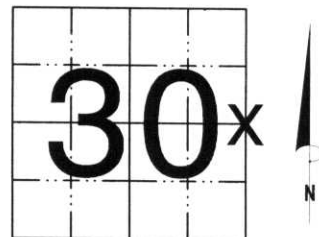


U.S. PUBLIC LAND SURVEY MONUMENT RECORD

NOTE: THIS FORM IS INTENDED AND DESIGNED TO FULFILL ALL REQUIREMENTS OF WISCONSIN ADMINISTRATIVE CODE, CHAPTER LAND SURVEY MONUMENT RECORD (3) (a) (b) (c) (d) (e) (f) (g) (h) (i). AN ADDITIONAL SHEET MAY BE ADDED IF NECESSARY TO CONFORM WITH SAID REQUIREMENTS. A-E 7.08 U.S. PUBLIC

(a) CORNER LOCATION: TOWNSHIP 33 NORTH
 RANGE 6 EAST/WEST
 TOWN ~~CITY/VILLAGE~~ ROCK FALLS
 COUNTY LINCOLN

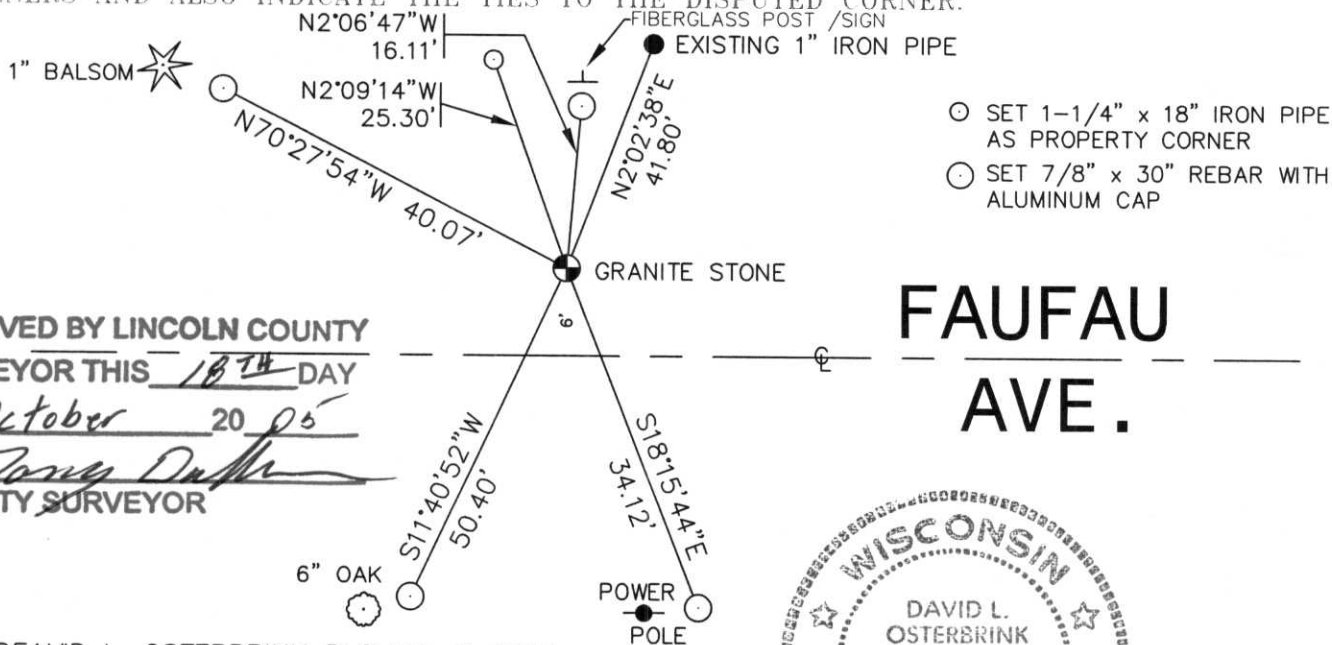


SECTION 30

(b) (f) (g) (h) DESCRIPTION OF MONUMENT FOUND AT THIS CORNER AND IF IT WAS ACCEPTED, STATE ALL EVIDENCE (MATERIAL, TESTIMONIAL, OCCUPATIONAL, PLATS, RECORDS, OTHER MONUMENTS) USED AS BASIS FOR ACCEPTING. IF NOT ACCEPTED OR IF NOTHING WAS FOUND, STATE EVIDENCE USED AS BASIS FOR ESTABLISHING LOCATION. IF REESTABLISHED THROUGH LOST CORNER PROPORTIONATE METHODS, INDICATE ALL MONUMENTS, DISTANCES AND DIRECTIONS USED TO ESTABLISH. INDICATE TYPE OF MONUMENT FOUND OR SET AND SIGN POST.

SURVEYS HAD BEEN TIED TO THIS CORNER, BUT THERE WAS NO VISIBLE EVIDENCE OF CORNER. TRAVERSED FROM E 1/4 CORNER, SECTION 29-33-6. AT RECORD DISTANCE FROM FOX NOTES, LOOKED WITH MAGNETIC LOCATOR. GOT READING 8 FEET NORTH OF FAUFAU AVENUE CENTER LINE. DUG BY HAND, FOUND BLACK GRANITE STONE, WITH SE CORNER CHIPPED OFF. THERE WAS A 3/4" IRON PIPE ON THE EAST SIDE OF STONE. STONE IS LEANING A LITTLE TO THE NW, BUT I WAS UNABLE TO STRAIGHTEN STONE. HELD STONE IN PRESENT LOCATION AS CORNER. TIED OUT BECAUSE OF STEEP HILL AND HIGH BANKS, IT WAS DIFFICULT TO SET IRONS OUT VERY FAR. SEE BACK OF TIE SHEET FOR TIES TO OTHER CORNERS.

(c) (d) (e) PLAN VIEW OF CORNER WITH TIES TO AT LEAST 4 WITNESS MONUMENTS. IF IN DISAGREEMENT WITH PREVIOUSLY ESTABLISHED CORNER, SHOW THE DISTANCES BETWEEN THE TWO CORNERS AND ALSO INDICATE THE TIES TO THE DISPUTED CORNER.



RECEIVED BY LINCOLN COUNTY
 SURVEYOR THIS 18TH DAY
 OF October 20 05
Tony Duff
 COUNTY SURVEYOR

FAUFAU
AVE.



(i) I, DAVID L. OSTERBRINK RLS NO. S-2014
 (TYPE OR PRINT NAME) CERTIFY THAT THE CORNER LOCATION ON THIS RECORD WAS DETERMINED BY ME OR UNDER MY DIRECTION AND CONTROL AND THAT THIS U.S. PUBLIC LAND SURVEY MONUMENT RECORD IS CORRECT AND COMPLETE TO THE BEST OF MY KNOWLEDGE AND BELIEF.

David L. Osterbrink 10-17-05
 SIGNATURE DATE

STAMP

INDEX NO. 5-5

N 1/4 COR. SEC 25-33-5

N89°13'11"E 2660.95'

88°24'03"

NE COR. SEC. 25-33-5

SECTION SUMMARY BY S. FAVORITE

2639.04'

S0°49'08"W

N89°01'33"E 5384.06'

E 1/4 COR. SEC. 30-33-6

N2°11'59"W
1214.84'



MEANDER CORNER NEAR NE COR. SEC. 30-33-6



SE COR. GOV. LOT 8, SEC. 30-33-6

N2°09'14"W
1311.10'

E 1/4 COR. SEC. 29-33-

N89°21'46"E 5328.86'



1" IRON PIPE, SE COR. GL8 SEC. 30-33-6
TRAVERSE FROM GPS POINT



GRANITE STONE MEANDER CORNER NEAR NE COR SEC. 30-33-6
SIDE SHOT FROM GPS POINT



SECTION CORNER SHOT WITH GPS



30-20









30-20