

U.S. PUBLIC LAND SURVEY MONUMENT RECORD

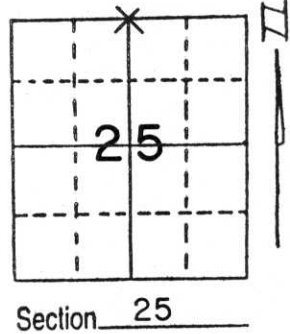
Note: This form is intended and designed to fulfill all requirements of Wisconsin Administrative Code, Chapter A-E 5.02, U.S. Public Land Survey Monument Record (3) (a) (b) (c) (d) (e) (f) (g) (h) (i). An additional sheet may be added if necessary to conform with said requirements.

(a) Corner location: Township 33 North

Range 6 East/~~West~~

Town/City/Village ROCK FALLS

County LINCOLN

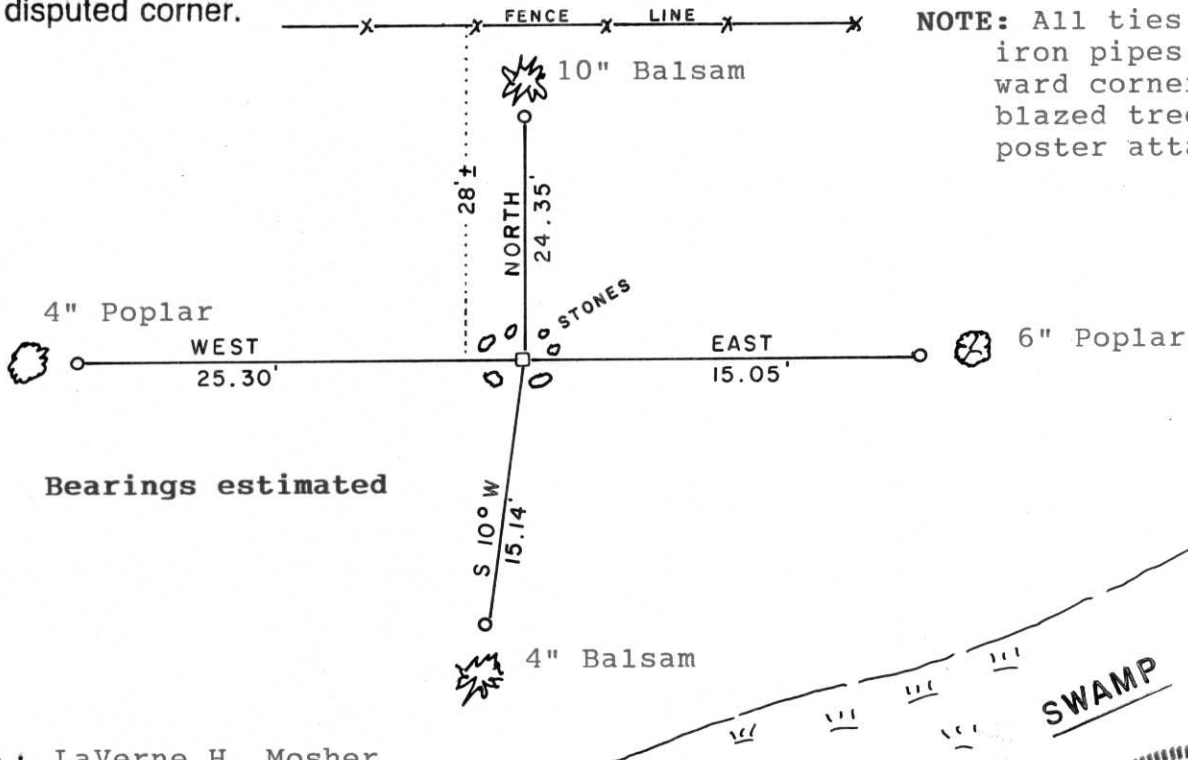


Section 25

(b) (f) (g) (h) Description of monument found at this corner and if it was accepted, state all evidence (material, testimonial, occupational, plats, records, other monuments) used as a basis for accepting. If not accepted or if nothing was found, state evidence used as basis for establishing location. If reestablished through lost corner proportionate methods, indicate all monuments, distances and directions used to establish.

A 6"x6" black granite stone scribed $\frac{24}{25}$ was found by P. Munninghoff on June 4, 1971, according to reference sheet provided by Wisconsin Department of Transportation Rhinelander office. On this date, we recovered said stone monument with scribing as noted; however, stone is black with white mottling. Monument is found almost flush with ground and ringed with large stones as per note of Department of Transportation. Stone found 28 feet South of East-West fence (mostly down) as per Department of Transportation notes. Believe stone set by Francis Fox during remonumentation survey of Town of Rock Falls in 1941. Accepted stone as correct corner location and tied out to 1" iron pipes set 1.0 feet toward cornerstone from blazed trees with location poster attached.

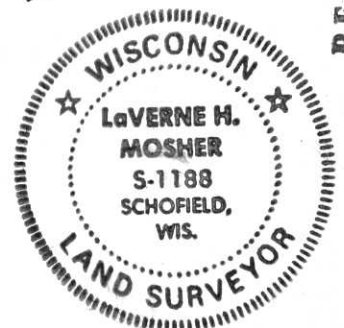
(c) (d) (e) Plan view of corner with ties to at least 4 witness monuments. If in disagreement with previously established corner, show the distances between the two corners and also indicate the ties to the disputed corner.



(i) I, LaVerne H. Mosher
 (type or print name) certify that the corner location on this record was determined by me or under my direction and control and that this U.S. Public Land Survey Monument Record is correct and complete to the best of my knowledge and belief.

LaVerne H. Mosher
 Signature

AUGUST 2ND, 1991
 Date



RECEIVED AUG 26 1991

Index No. Q-23

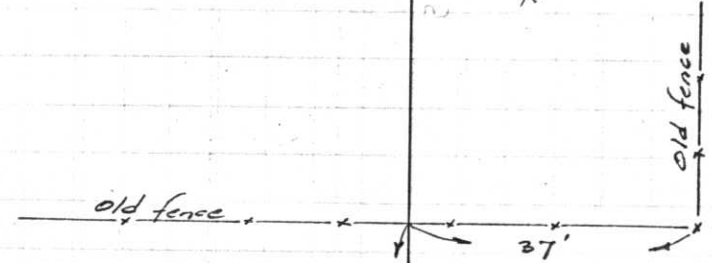
T33N

R6E

June 4, 1971



N. 1/4 Cor. Sec. 25-33-GE



N. 1/4 Cor. Sec. 25-33-GE
6"x6" Black Granite Stone
scribed $\frac{24}{25}$ Found by P. Munningshoff
6/4/71
N 543, 193.87
E 2,081, 592.61

Moral:
Fence corners don't
mean a d - thing.
(WHS)

Project I.D. 1173-5-00 1.4 Mi.N.
Merrill-C.T.H. "s" U.S.H. 51
Freeway Lincoln County Wm. Scherer
Surveyor Received from Division of
Hwy's. Jan. 11.1973

71.

REFERENCES

